



# Master-Trol

Electronic Water Management System

Conserves water, Provides Security,  
and Maintains Complete Control  
Over Water Resources



Est. 1954

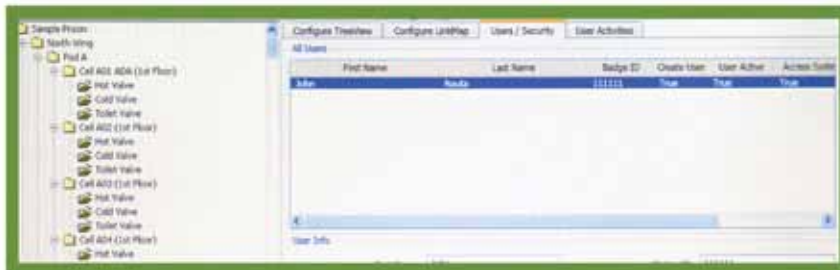
# Progression of Development

For over fifty years Acorn Engineering Company has been an industry leader for quality plumbing fixtures. As a progression of our development, we have updated the Master-Trol water management system. As correctional facilities reach full capacity, so does the demand for its' water resources. Master-Trol offers new ways to manage water usage in order to conserve water, provide security, and maintain control in facilities across the globe. For over fifteen years the Master-Trol system has been proven to meet the needs of both correctional facilities and facilities where water management is essential.

Over the years Acorn has strived to improve the quality of our product and the Master-Trol system is a part of that mission.



In our efforts, we have improved the **USER INTERFACE** to provide simplified navigation and ease of use. In addition, we have also added new functions and modified existing functions to provide versatility and added control.



**USER LEVEL PASSWORDS** have been added to provide security and limit access to specific areas and functions.

# Password Tracking

**P**assword tracking capabilities allow the user to view when and whom has made modifications to the system. In addition, the Master-Trol system can be connected to the facilities existing LAN (Local Area Network) and accessed by other computers on the network using the systems client software.

The Master-Trol water management system is a versatile system that allows different levels of installation to suit the customers needs and budget. The system can be installed seamlessly into new construction or retrofitted into any existing facility.



To ensure the quality of an installation, a technician will inspect the Master-Trol installation, setup and program the computer interface to facility specifications, and provide onsite training to staff personnel.

## | System Specifications

Each controller is designed to control up to twelve valves. Controllers can be pre-programmed for stand alone installations or linked together and connected to a computer (optional) provided by Acorn Engineering Company. The computer can be used to monitor and program any Master-Trol controller connected to the system.

Master-Trol controllers are linked to the computer using an interface card and up to eight pairs of shielded wire called "links". Each link can run a maximum distance of 4,000 feet from the computer to the last controller with a maximum of 32 controllers per link. The computer can be connected to an existing LAN (Local Area Network) and accessed by other computers on the same network using the provided client software. A handheld programmer is also available to access and program controllers individually or access a number of controllers that are connected to a link.



# Features

## Existing Features

- Adjustable valve runtimes (Factory or Field Adjustable)
- Adjustable valve lockout Times (Factory or Field Adjustable)
- Ability to enable/disable single or multiple valves (Factory or Field Adjustable)
- Multiple valve options to tailor the function of the valve to the type of fixture it services (Factory or Field Adjustable)
- Remote operation allows user to activate a valve with the click of a button (Factory or Field Adjustable)
- Password protected (Factory or Field Adjustable)

## Added Features

- Updated user interface with a “Windows Explorer” view of the facility
- Ability to make global changes by valve groups or valve types
- Ability to assign multiple level user passwords that can limit access to functions or areas of the facility
- Ability to customize 24 hour limitations on water usage or activations. This allows the facility to set a time limit on how long a valve can operate or how many activations are allowed in a 24 hour period. At the end of each 24 hour period, limits are reset. The user can also set up to three timed windows of access which allows access to the valves only during specified times of the day
- Variable lockout which allows the facility to set a specified number of activations a valve can perform within a specified period of time before it imposes a specified lockout time
- Ability to assign valves to queued activation or random activation to prevent simultaneous activations
- Ability to set the valve to “Auto Cycle” which will automatically cycle a valve after a specified period of nonuse
- Ability to cycle a valve from the computer using its programmed parameters
- Password tracking abilities has been added to allow the user to view when changes have been made, what functions have been performed, and by whom
- Ability to track and chart the amount of water usage and activations over specified periods of time
- Extra security has been added that prevents unauthorized access to the Master-Trol system even if the intruder has illegally acquired a copy of the client software

### Acorn Engineering Company

Manufacturer of Engineered Plumbing Products

P.O. Box 3527, City of Industry, CA 91744-0527 U.S.A.

Tel: 800.488.8999, 626.336.4561, 626.961.2200

Website: [www.acorneng.com](http://www.acorneng.com) E-mail: [info@acorneng.com](mailto:info@acorneng.com)

