



2020 Series

Drinking Fountain, 2 & 3 Station - ADA Compliant



2030-ADA-1-BC-3

Fixture May Show Some Available Options

Please visit www.acorneng.com for most current specifications.

Drinking Fountains, 2 & 3 Station - ADA Compliant

Fixture is designed to be installed and serviced from the front of a finished wall. Fixture is fabricated from 16 gage, type 304 stainless steel and is seamless welded construction with a satin finish. Bottom of unit includes removable enclosure. Unit conforms with ANSI, UFAS and ADA requirements for accessibility. Compliance is subject to the interpretation and requirements of the local code authority.

Countertop has deck-mounted bubblers, each with a mouthguard, the left hand station providing ADA compliance.

Bowl is oval. Standard close elbow waste outlet is 1-1/4" O.D. plain end.

Valves are air control, pneumatically operated, non-metering, self-closing type. All exposed trim is chrome-plated. Air control valves have a 0.7 GPM flow control. ADA compliant pushbutton requires less than 5 pounds push to activate valve. Valve conforms with the lead-free requirements of NSF 61, Section 9-1997.

Regularly furnished items include an air control self-closing valve, bubblers with mouthguards, grid strainer with close elbow, and mounting brackets. Screws and anchor shields by others.

GUIDE SPECIFICATION

Provide and install Acorn Dura-Ware, ADA Compliant 2 or 3 Station, Drinking Fountain (specify model number and options). Left hand station shall comply with ADA requirements. Fixture shall be fabricated from 16 gage, type 304 stainless steel. Construction shall be seamless welded and exposed surfaces shall have a satin finish. Fixture shall be furnished with Air-Control self-closing valve, bubblers with mouthguards, grid strainer with close elbow, and mounting brackets. Valve to conform with NSF 61, Section 9-1997 lead-free requirements. The pushbutton for the air control valve shall be ADA compliant. Installer shall furnish mounting screws, anchor shields and required reinforcement. Units to conform with ANSI, UFAS and ADA requirements for accessibility.

Dura-Ware®: 2020 Drinking Fountains, 2 & 3 Station - ADA Compliant



MODEL NUMBER AND OPTIONS SELECTION

BASE MODEL NUMBER

- 2020 ADA Drinking Fountain, 2 Station
- 2030 ADA Drinking Fountain, 3 Station

FIXTURE MOUNTING AND WASTE (Must Specify)

- 1 Off-Floor, Wall Outlet

BUBBLER SELECTION (Must Specify)

- BC Bubbler, Code

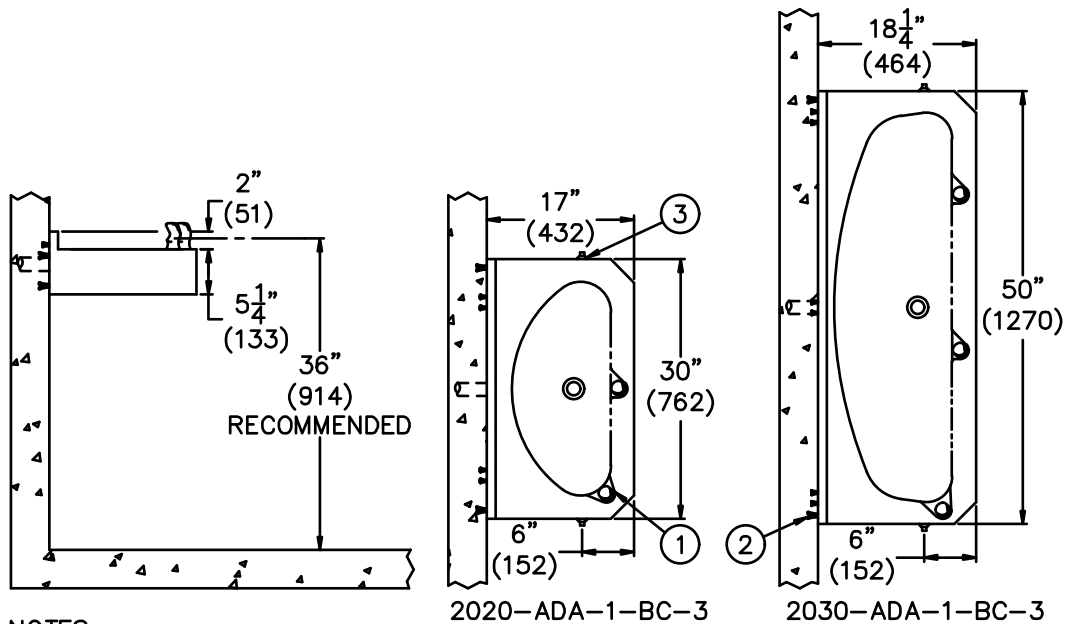
VALVE SELECTION (Must Specify)

- 3 Air-Control, Single Temperature
- EVS1 Electronic Valve System - Single Temp
- MVC1 Time-Trol - Single Temp

Product Options

- AB Angle Braces
- EG Enviro-Glaze Color, Specify: _____
- FG 14 Gage Housing
- FP Freeze Resistant Box
- GT Grid Strainer w/Tailpiece 1-1/4"
- TPT Tubular P-Trap 1-1/4" x 1-1/2"

Please visit www.acorneng.com for most current specifications.



NOTES:

1. Drinking Bubblers with Mouthguard.
2. Wall Mounting Anchors (By Others).

3. Valve Pushbuttons.

<p>Important: Installation instructions and current rough-in are furnished with each fixture. Do not rough in without certified dimensions. Dimensions are subject to manufacturer's tolerance of plus or minus 1/4" and change without notice. Acorn assumes no responsibility for use of void or superseded data. © Copyright 2003 Acorn Engineering Company</p>	
<p>Selection Summary</p> <p>Model No. & Option _____</p> <p>Quantity _____</p>	<p>Approved for Manufacturing</p> <p>Company _____ Title _____</p> <p>Signature _____ Date _____</p>