



Hose & Supply Boxes 1751 Series

Surface-Mounted Hot and Cold Pressure Balancing Temperature Control Box



1751

Fixture May Show Some Available Options

Please visit www.acorneng.com for most current specifications.

Surface-Mounted Hot and Cold Pressure Balancing Temperature Control Box

Temperature Control Box recommended for small installations and isolated locations where no more than 7.5 GPM is required (with 40 PSI minimum inlet pressure and adequate water volume).

Box is fabricated from 18 gage, type 304 stainless steel and all seams are continuous welded. It is furnished with four holes on the back for mounting. Wall anchoring hardware by others. Baffle is 22 gage. All exposed surfaces are polished to a satin finish.

Door is provided with full length piano hinge, Cam and Cylinder Lock with Key Lock and two keys.

Control Valve has cast bronze body and features a replaceable cartridge containing all wearing parts. A diaphragm actuated pressure balancing mechanism instantly compensates for pressure fluctuations in either hot or cold water supply. This controller does NOT recognize temperature changes. Outlet temperature will fluctuate with supply temperature changes. Valve will immediately shut off, should the cold water source fail. Exposed valve parts are polished chrome-plated. Valve has screwdriver checkstops in each supply behind removable baffle, which permits servicing without shutting down the water supply. Valve also has a temperature limiting stop for manually setting the maximum hot water flow once valve is operational. Acorn recommends maximum outlet temperature at 105 degrees Fahrenheit to prevent scalding.

Temperature Gage has a stainless steel case and is calibrated from 0 to 200 degrees Fahrenheit.

Supply and Outlet Connections are 1/2" NPT female and are securely anchored to box so that internal piping will not be damaged during installation.

GUIDE SPECIFICATION

Provide and install Acorn Surface-Mounted Hot and Cold Pressure Balancing Temperature Control Box Model 1751 fabricated from 18 gage, type 304 stainless steel with full length piano hinged door. Door is Key Lock operated. All exposed stainless steel surfaces including interior stainless steel baffle shall be polished to a satin finish. Control handle shall be polished chrome-plated. Control valve shall be cartridge-operated Diaphragm Actuated Pressure Balancing type with a Temperature Limiting Stop, and individual screwdriver operated Checkstops. Temperature gage shall be calibrated from 0 to 200 degrees Fahrenheit.

Hose & Supply Boxes 1751 Surface-Mounted Hot and Cold Pressure Balancing Temperature Control Box



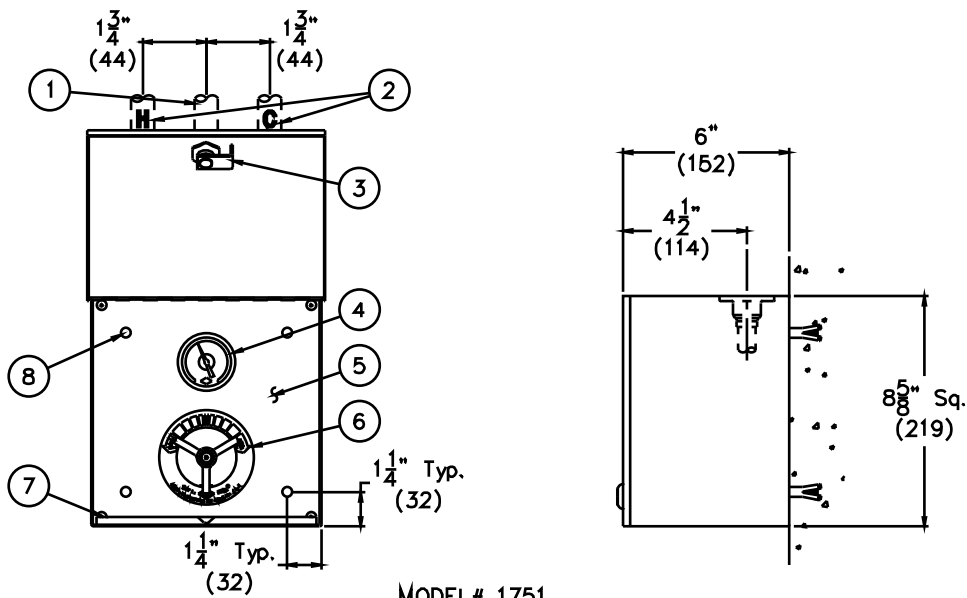
BASE MODEL NUMBER (Must Specify)

-1751 Surface Mounted Hot and Cold Pressure Balancing Temperature Control Box

Product Options

- * None Available

Please visit www.acorneng.com for most current specifications.



MODEL# 1751

NOTES:

- 1. Outlet Piping (By Others).
- 2. Supply Piping (By Others).
- 3. Keyed Cylinder Lock.
- 4. Temperature Gage.
- 5. Removable Baffle.
- 6. Safti-Trol Control Valve.
- 7. Baffle Retaining Screws.
- 8. Wall Anchoring Holes.

<p>Important: Installation instructions and current rough-in are furnished with each fixture. Do not rough in without certified dimensions. Dimensions are subject to manufacturer's tolerance of plus or minus 1/4" and change without notice. Acorn assumes no responsibility for use of void or superseded data. © Copyright 2004 Acorn Engineering Company</p>	
<p style="text-align: center;">Selection Summary</p> <p>Model No. & Option _____</p> <p>Quantity _____</p>	<p style="text-align: center;">Approved for Manufacturing</p> <p>Company _____ Title _____</p> <p>Signature _____ Date _____</p>