



Penal-Ware® 1432FA-ALAR Series

ADA Compliant - Compact Lav/Toilet Comby - Front Access



1432FA-AL-2-BP-4

Fixture May Show Some Available Options

Please visit www.acorneng.com for most current specifications.

ADA Compliant - Compact Lav/Toilet Comby - Front Access

Fixture is arranged to be installed on finished wall and serviced thru removable access panels that provide access to six mounting points as well as supply connections. Panels are located below the lavy and on side of cabinet and secured with tamper resistant screws. Fixture is fabricated with 14 gage type 304 stainless steel cabinet and toilet bowl and is seamless welded construction with a satin finish. The inside of the toilet bowl has a matte finish. Cabinet interior is sound deadened with fire resistant material. Unit complies with ANSI, UFAS and ADA requirements. Compliance is subject to the interpretation and requirements of the local code authority.

Lavatory Oval Bowl is 9-3/4" x 13-1/2" x 5" deep. Standard 1-1/2" OD removable P-trap with plain end waste connection.

Optional Lavatory Valve may be an Air-Control pneumatically operated, pushbutton valve with 0.5 GPM flow control. Pushbutton requires less than 5 lbs. to activate valve. Valve is metering, non-hold open type. Timing is from 5 to 60 seconds. Valve can be remotely located up to 10 feet from the operating pushbutton. Valve complies with the lead free requirements of NSF 61, Section 9-1997.

Toilet is blowout jet type with elongated bowl manufactured to ANSI 112.19.2M requirements and requires a minimum of 35 PSI flow pressure. Toilet uses a water consumption of 1.6 min. gallons per flush. Trap has a minimum 3-1/2" seal and will pass a 2-1/8" ball. The inside of the toilet bowl has a matte finish. Toilet waste outlet is Gasket Waste with 2-3/8" OD trap way. Unit is provided with a hydraulically actuated flush valve (shipped loose).

Integral Grab Bar is heavy gage type 304 stainless steel construction, 1-1/2" diameter x 36" long. Grab bar is welded to the cabinet behind the toilet with two wall anchoring points on the wall side plate.

GUIDE SPECIFICATION

Provide and install Acorn Penal-Ware ADA Compact Compliant Lav/Toilet-Comby-Angled Toilet Bowl-Angled Lavy (specify model number and options). Unit shall conform with ANSI, UFAS and ADA requirements. Fixture shall be fabricated from type 304 stainless steel. Construction shall be seamless welded and exposed surfaces shall have a satin finish. Provide an integral grab bar to be located behind toilet. Fixture shall have an Air-Control pneumatically operated, metering, non-hold open pushbutton valve. Valve shall require less than 5 lbs. to activate. Valve to comply with NSF 61, Section 9-1997 lead free requirements. Toilet shall be concealed blowout jet type with an elongated bowl, a self-draining flushing rim and an integral contoured seat. Toilet shall meet ANSI 112.19.2M requirements, using an average water consumption of 1.6 gallons per flush or less. Toilet trap shall have a minimum 3-1/2" seal that shall pass a 2-1/8" diameter ball and be fully enclosed. Cabinet interior is to be sound deadened with fire-resistant material. Fixture shall be furnished with necessary fasteners for proper installation.



Penal-Ware® 1432FA-ALAR: ADA Compliant - Compact Lav/Toilet Comby - Front Access

WALL THICKNESS AND TYPE (Must Specify)

Thickness _____ Type: Concrete Block _____

MODEL AND OPTIONS SELECTION:

BASE MODEL NUMBER

1432FA Front Access ADA Compact Lav/Toilet Comby

TOILET ORIENTATION (Must Specify)

- AL Angled Left
- AR Angled Right

FIXTURE MOUNTING AND WASTE (Must Specify)

- 2 On-Floor, Wall Outlet
- 3 On-Floor, Floor Outlet

BUBBLER SELECTION (Must Specify)

- BC Bubbler, Code
- BP Bubbler, Penal
- BPH Hemispherical Penal Bubbler
- LF Lav-Filler

VALVE SELECTION (Must Specify)

- 3 Air-Control, Single Temperature
- 4 Air-Control, H & C
- 9 Punched for Valve by Others
- EVS1 Electronic Valve System - Single Temp
- EVS2 Electronic Valve System - Hot & Cold
- MVC1 Time-Trol - Single Temp
- MVC2 Time-Trol - Hot & Cold

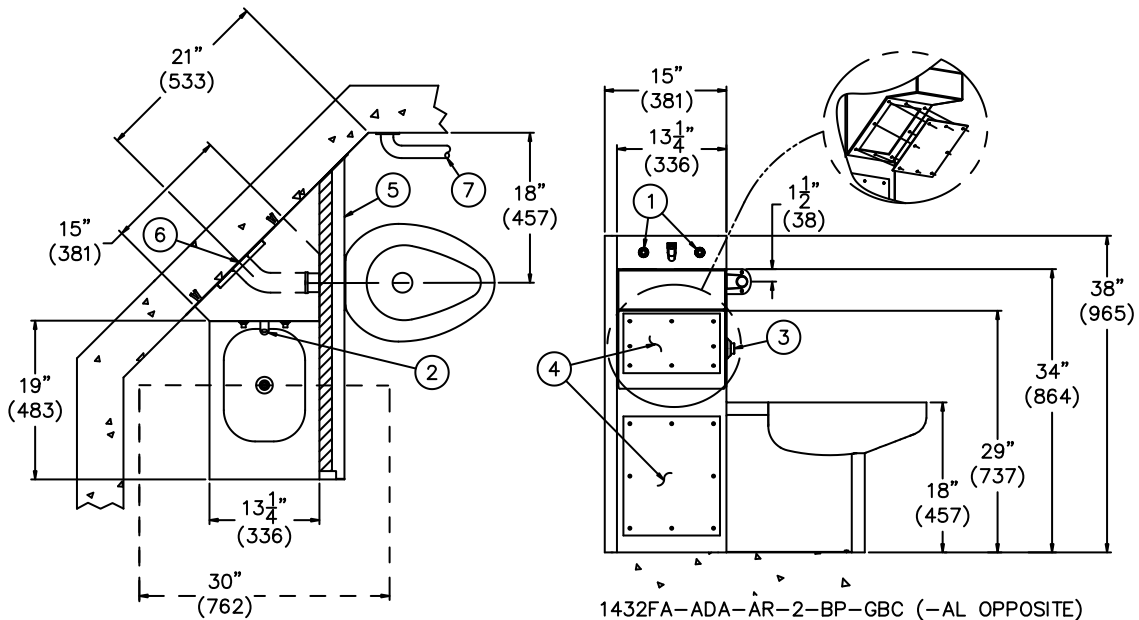
FLUSH VALVE REQUIREMENTS (Must Specify)

- Hydraulic _____ -1.6 GPF _____ -3.5 GPF
- _____ -EVSVF _____ -MVCVF

Product Options cont.

- CW Combined Waste
- EG Enviro-Glaze, Specify Color: _____
- FMT Fixture Mounted Trim
- FT Flood-Trol (Manual Reset)
- FTA Flood-Trol Auto-reset
- FTE Flood-Trol Electronic
- GBC Grab Bar Closure Plate
- GBC2 Grab Bar and Lavy Closure Plate
- HPS High Polish Seat, #7 Finish
- HS Hinged Seat
- LGB Less Grab Bar
- LPFV Less Punching for Flush Valve
- MT Metal Template (Only 1 Required Per Project)
- OF Lavatory Overflow
- PBH Hemispherical Pushbutton
- PH Paper Holder (Same Side as Toilet)
- SPS Suicide Prevention Skirt
- SW Wall Sleeve
- TB Toothbrush Holder (Lavy Housing Opposite Grab Bar) _____Single _____Double
- TF Transformer, 120VAC to 24VAC
- TG 12 Gage Cabinet
- TH Towel Hook (Lavy Side) _____ Single _____ Double
- TSC Toilet Shipping Cover
- VAC Acorn VAC System
- WO3 3" Toilet P-Trap (3.5 GPF Only)

Please visit www.acorneng.com for most current specifications.



NOTES:

- 1. OPTIONAL -04 HOT & COLD PUSHBUTTONS SHOWN.
- 2. OPTIONAL LAVY -BP PENAL BUBBLER SHOWN.
- 3. HYDRUALIC -FV FLUSH VALVE PUSHBUTTON.
- 4. ACCESS PANELS.
- 5. INTEGRAL GRAB BAR w/ OPTIONAL -GBC GRAB BAR CLOSURE STRIP.
- 6. GASKET WASTE OUTLET.
- 7. 42" GRAB BAR BY OTHERS.

<p>Important: Installation instructions and current rough-in are furnished with each fixture. Do not rough in without certified dimensions. Dimensions are subject to manufacturer's tolerance of plus or minus 1/4" and change without notice. Acorn assumes no responsibility for use of void or superseded data. © Copyright 2008 Acorn Engineering Company</p>	
<p style="text-align: center;">Selection Summary</p> <p>Model No. & Option _____</p> <p>Quantity _____</p>	<p style="text-align: center;">Approved for Manufacturing</p> <p>Company _____ Title _____</p> <p>Signature _____ Date _____</p>