



## Penal-Ware® 1437LORO Series

ADA Compliant - Lav/Toilet Comby - Offset Toilet Bowl - Angled Lavy



1437-LO-2-DMS-04

Fixture May Show Some Available Options

Please visit [www.acorneng.com](http://www.acorneng.com) for most current specifications.

### ADA Compliant - Lav/Toilet Comby - Offset Toilet Bowl - Angled Lavy

**Fixture** is arranged to be installed on finished wall and serviced from an accessible pipe chase. Fixture is fabricated from 14 gage, type 304 stainless steel cabinet and toilet bowl, polished to a satin finish. The inside of the toilet bowl also has a satin finish. Cabinet interior is sound deadened with fire-resistant material. Access panels are provided to service flush valve and lavy valve pushbuttons. Optional Wall Sleeve or Metal Template is recommended for all installations to provide required wall openings. Unit complies with ANSI, UFAS and ADA requirements. Compliance is subject to the interpretation and requirements of the local code authority.

**Lavatory Oval Bowl** is 14-3/4" x 9-1/2" x 5" deep. Standard P-trap waste outlet is 1-1/2" O.D. plain end.

**Optional Valve** may be an Air-Control pneumatically operated, pushbutton valve with 1.4 GPM flow control. Pushbutton requires less than 5 lbs. to activate valve. Valve is metering, non-hold open type. Timing is from 5 to 60 seconds. Valve can be remotely located up to 10 feet from the operating pushbutton. Includes deck-mounted spout. Valve complies with the lead free requirements of NSF 61, Section 9-1997.

**Toilet** is blowout jet type with elongated bowl manufactured to ANSI 112.19.2M requirements and requires a minimum of 35 PSI flow pressure. Toilet uses a water consumption of 1.6 gallons per flush or less. Trap has a minimum 3-1/2" seal and will pass a 2-1/8" ball. Toilet waste outlet is 2-3/8" diameter plain end extending 3" beyond the fixture for wall outlet and Gasketed Waste for floor outlet. Unit is provided with a hydraulically actuated flush valve (shipped loose).

**Grab Bar** is heavy gage type 304 stainless steel construction, 1-1/2" diameter x 36" long. Grab bar is positioned behind toilet and is field installed to cabinet and to wall.

#### GUIDE SPECIFICATION

Provide and install Acorn Penal-Ware ADA Compliant Lav/Toilet-Comby-Offset Toilet Bowl-Angled Lavy (specify model number and options). Unit shall conform with ANSI, UFAS and ADA requirements. Fixture shall be fabricated from type 304 stainless steel. Construction shall be seamless welded and exposed surfaces shall have a satin finish. Provide 36" long stainless steel grab bar to be located behind toilet. Fixture shall have an Air-Control pneumatically operated, metering, non-hold open pushbutton valve. Valve shall require less than 5 lbs. to activate. Valve to comply with NSF 61, Section 9-1997 lead free requirements. Toilet shall be blowout jet type with an elongated bowl, a self-draining flushing rim, and an integral contoured seat. Toilet shall meet ANSI 112.19.2M requirements, using an average water consumption of 1.6 gallons per flush or less. Toilet trap shall have a minimum 3-1/2" seal that shall pass a 2-1/8" diameter ball and be fully enclosed. Cabinet interior is to be sound deadened with fire-resistant material. Fixture shall withstand loadings of 3,000 pounds without permanent damage. Fixture shall be furnished with necessary fasteners for proper installation.

**Penal-Ware® 1437LORO: ADA Compliant - Lav/Toilet Comby - Offset Toilet Bowl - Angled Lavy**



**WALL THICKNESS AND TYPE (Must Specify)**

Thickness \_\_\_\_\_ Type:  Concrete  Block  Steel

**MODEL AND OPTIONS SELECTION**

**BASE MODEL NUMBER**

1437-ADA Lav/Toilet Comby - ADA Compliant

**TOILET ORIENTATION (Must Specify)**

- LO Left Offset  
 - RO Right Offset

**FIXTURE MOUNTING AND WASTE (Must Specify)**

- 2 On-Floor, Wall Outlet  
 - 3 On-Floor, Floor Outlet

**SPOUT SELECTION (Must Specify)**

-DMS Deck Mounted Spout  
 -DMB Deck Mounted Bubbler (In Lieu of Spout)  
 \_\_\_ -BP Penal Bubbler \_\_\_ -BC Code Bubbler  
 \_\_\_ -BPH Hemispherical Penal Bubbler

**VALVE SELECTION (Must Specify)**

-03 Air-Control, Single Temperature  
 -04 Air-Control, H & C  
 -09 Punched for Valve by Others (Specify Punching)  
 -EVS1 Electronic Valve System - Single Temp  
 -EVS2 Electronic Valve System - Hot & Cold  
 -MVC1 Time-Trol - Single Temp  
 -MVC2 Time-Trol - Hot & Cold

**FLUSH VALVE REQUIREMENTS (Must Specify)**

- Hydraulic \_\_\_\_\_ -1.6 GPF \_\_\_\_\_ -3.5 GPF  
 \_\_\_\_\_ -EVSFV \_\_\_\_\_ -MVCFV

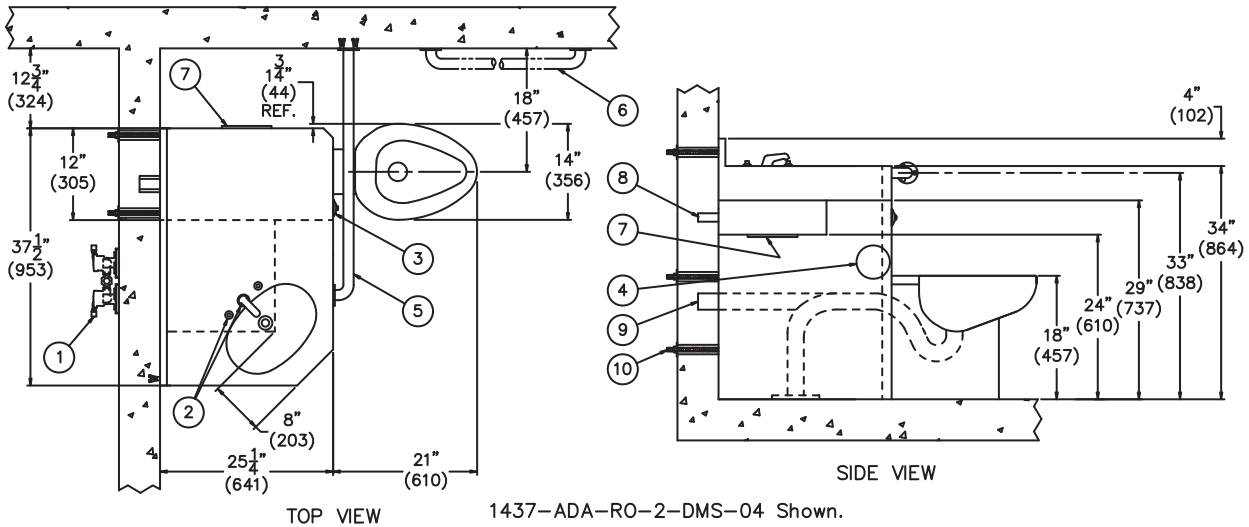
**Product Options**

- CO1 Cleanout w/ O-Ring,  
 Connecting to No-Hub \_\_\_\_\_ 3" \_\_\_\_\_ 4"  
 - COH Cleanout Hook Assembly  
 - CW Combined Waste

**Product Options (cont.)**

- EG Enviro-Glaze, Specify Color: \_\_\_\_\_  
 - Exterior Only (Not Inside Bowl)  
 - Exterior & Inside Bowl  
 - FA Front Access Fixture  
 - FMT Fixture Mounted Trim  
 - FT Flood-Trol (Manual Reset)  
 - FTA Flood-Trol Auto-reset  
 - FTE Flood-Trol Electronic  
 - GBC Grab Bar Closure Plate (N/A with AL/AR Toilet)  
 - GW Gasketed Toilet Waste  
 - HPS High Polished Seat #7 Finish  
 - HS Hinged Seat  
 - LGB Less Grab Bar  
 - LPFV Less Punching for Flush Valve  
 - LWE Lavy Waste Extension (3" Standard)  
 Specify Length Beyond Fixture \_\_\_\_\_  
 - MA Manifoldd Air-Control Valves \_\_\_\_\_  
 - MT Metal Template (Only 1 Required Per Project)  
 - OF Lavatory Overflow  
 - PBH Hemispherical Pushbutton  
 - PC Pinned Cleanout Plug  
 - PFS Punched for Seat by Others  
 - PH Paper Holder (Opposite Toilet)  
 - SPS Suicide Prevention Skirt  
 - SW Wall Sleeve  
 - TB Toothbrush Holder (Lavy Side)  
 - TF Transformer, 120VAC to 24VAC  
 - TG 12 Gage Cabinet  
 - TH Towel Hook (Lavy Side) \_\_\_\_\_ Single \_\_\_\_\_ Double  
 - TSC Toilet Shipping Cover  
 - TWE Toilet Waste Extension (3" Standard)  
 Specify Length Beyond Fixture \_\_\_\_\_  
 - VAC AcornVac System  
 - VG3 Ventilation Grille 8-3/4" x 8-3/4" \_\_\_\_\_ Left \_\_\_\_\_ Right  
 - WO3 3" Toilet P-Trap (3.5 GPF Only)  
 - WO3B 3" Bell Waste Outlet

Please visit [www.acorneng.com](http://www.acorneng.com)  
 for most current specifications.



**NOTES:**

- |                                        |                                    |                             |
|----------------------------------------|------------------------------------|-----------------------------|
| 1. Optional -04 Air-Control Valve.     | 5. Grab Bar - 36".                 | 9. Toilet Waste Outlet.     |
| 2. Deck Mounted Spout & Pushbuttons.   | 6. Req'd 42" Grab Bar (By Others). | 10. Wall Mounting Hardware. |
| 3. Flush Valve Pushbutton.             | 7. Access Panels.                  |                             |
| 4. Optional -PH Recessed Paper Holder. | 8. Lavy Waste Outlet.              |                             |

<p><b>Important:</b> Installation instructions and current rough-in are furnished with each fixture. Do not rough in without certified dimensions.                  Dimensions are subject to manufacturer's tolerance of plus or minus 1/4" and change without notice. Acorn assumes no responsibility for use of void or superseded data. © Copyright 2008 Acorn Engineering Company</p>	
<p style="text-align: center;">Selection Summary</p> <p>Model No. &amp; Option _____</p> <p>Quantity _____</p>	<p style="text-align: center;">Approved for Manufacturing</p> <p>Company _____ Title _____</p> <p>Signature _____ Date _____</p>