



## Penal-Ware® 1672 Series Drinking Fountain - ADA Compliant



1672-1-BC-3

Fixture May Show Some Available Options

Please visit [www.acorneng.com](http://www.acorneng.com) for most current specifications.

### Drinking Fountain - ADA Compliant

**Fixture** is designed to be installed and serviced from an accessible pipe chase. Optional Wall Sleeve or Metal Template is recommended for all installations for required wall openings. Fixture is fabricated from 14 gage, type 304 stainless steel and is seamless welded construction with a satin finish. Cabinet interior is sound-deadened with fire-resistant material. There are no accessible voids or crevices where contraband can be concealed. Unit conforms with ANSI, UFAS and ADA requirements for accessibility. Compliance is subject to the interpretation and requirements of the local code authority.

**Countertop** has a deck-mounted bubbler.

**Bowl** is multi-sided. Standard elbow waste outlet is 1-1/2" O.D. plain end.

**Valves** (ADA compliant) available are:

1. Air-control pneumatically operated, pushbutton valve using atmospheric air. Pushbutton is vandal-resistant and requires less than 5 pounds to activate valve. Timing is from 5 to 60 seconds. Air-control valves can be remotely located up to 10 feet from the operating pushbutton. Valve conforms with the lead-free requirements of NSF 61, Section 9-1997.
2. Electronic valve system using Modular Valve Controller for water metering through precise electronic control of a solenoid valve. Valve timing is from 1 second to 9 minutes. Modular Valve Controller can be remotely located up to 100 feet from the operating pushbutton.

**Regularly furnished** items include an ADA compliant control valve, a bubbler, a fast drain and mounting hardware for walls up to 8" thick.

#### GUIDE SPECIFICATION

Provide and install an Acorn Penal-Ware, ADA Compliant Drinking Fountain (specify model number and options). Fixture shall be fabricated from 14 gage, type 304 stainless steel. Construction shall be seamless welded and exposed surfaces shall have a satin finish. Cabinet interior is sound-deadened with fire-resistant material. Fixture shall be furnished with an ADA compliant control valve, a bubbler and necessary fasteners for proper installation. Units to conform with ANSI, UFAS and ADA requirements for accessibility.



# Penal-Ware® 1672 : Drinking Fountain - ADA Compliant

## WALL THICKNESS AND TYPE (Must Specify)

Thickness \_\_\_\_\_ Type \_\_\_\_\_

## MODEL NUMBER AND OPTIONS SELECTION

### BASE MODEL NUMBER

- o 1672 Drinking Fountain - ADA Compliant

### FIXTURE MOUNTING AND WASTE (Must Specify)

- o - 1 Off-Floor, Wall Outlet

### BUBBLER SELECTION (Must Specify)

- o - BC Bubbler, Code
- o - BP Bubbler, Penal

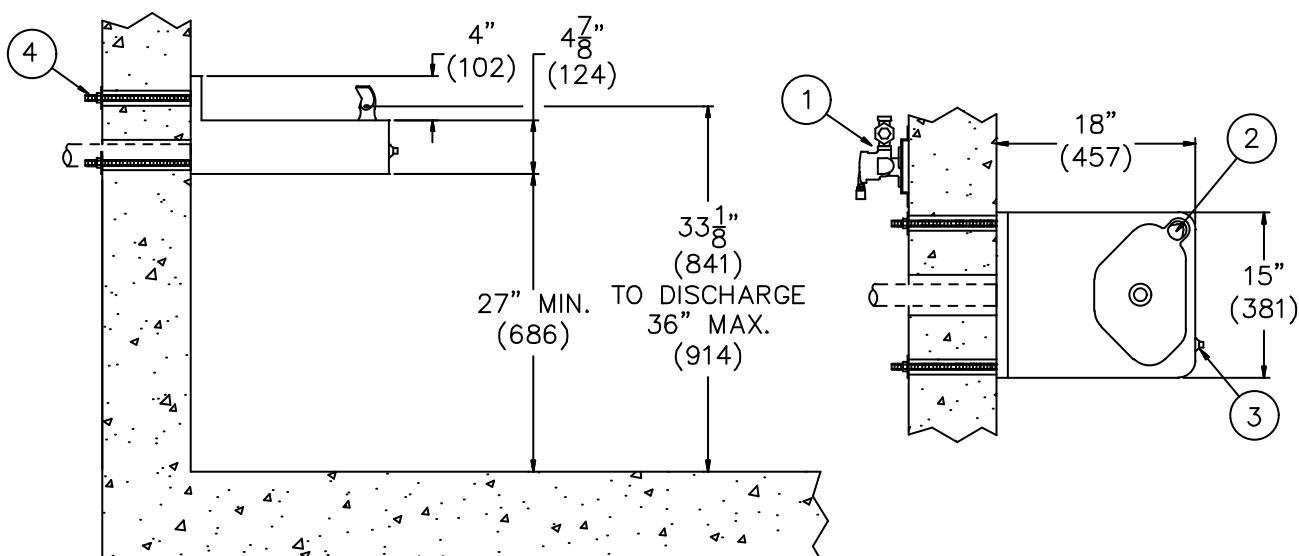
### VALVE SELECTION (Must Specify)

- o - 3 Air-Control, Single Temperature
- o - EVS1 Electronic Valve System - Single Temp
- o - MVC1 Time-Trol - Single Temp

## Product Options

- o - EG Enviro-Glaze, Specify Color: \_\_\_\_\_
- o - LW1 Lavy Thru-Wall Extension with P-Trap
- o - MT Metal Template (Only 1 Required Per Project)
- o - PBH Hemispherical Pushbutton
- o - SW Wall Sleeve
- o - TG 12 Gage Cabinet

Please visit [www.acorneng.com](http://www.acorneng.com) for most current specifications.



1672-ADA-1-BC-3

### NOTES:

1. Optional -3 Air-Control Valve.
2. (-BC) Drinking Bubbler.
3. Valve Pushbutton.
4. Wall Mounting Hardware.

<p><b>Important:</b> Installation instructions and current rough-in are furnished with each fixture. Do not rough in without certified dimensions. Dimensions are subject to manufacturer's tolerance of plus or minus 1/4" and change without notice. Acorn assumes no responsibility for use of void or superseded data. © Copyright 2007 Acorn Engineering Company</p>	
<p>Selection Summary</p> <p>Model No. &amp; Option _____</p> <p>Quantity _____</p>	<p>Approved for Manufacturing</p> <p>Company _____ Title _____</p> <p>Signature _____ Date _____</p>