



Penal-Ware® 1686 Series

ADA Compliant - Toilet With Grab Bar For Angled Chase Wall



1686-AL-2-PH

Fixture May Show Some Available Options

Please visit www.acorneng.com for most current specifications.

ADA Compliant - Toilet With Grab Bar For Angled Chase Wall

Fixture is arranged to be installed on a finished wall and serviced from an accessible pipe chase. Toilet is intended for installation in combination with Model Number 1652-ADA Lavatory. Optional wall sleeve or metal template is recommended for all installations to provide required wall openings. Toilet bowl is fabricated from 14 gage, type 304 stainless steel and is seamless welded construction with exposed surfaces polished to a satin finish. The inside of the toilet bowl also has a satin finish. Cabinet interior is sound-deadened with fire-resistant material. Unit complies with ANSI, UFAS and ADA requirements. Compliance is subject to the interpretation and requirements of the local code authority.

Toilet is blowout jet type with elongated bowl manufactured to ANSI 112.19.2M requirements and requires a minimum of 35 PSI flow pressure. Toilet uses a water consumption of 1.6 gallons per flush or less. Trap has a minimum 3-1/2" seal and will pass a 2-1/8" ball. Toilet waste outlet is 2-3/8" diameter plain end extending 3" beyond the back of fixture for wall outlet and Gasketed Waste for floor outlet. Unit is intended for installation with a hydraulically actuated flush valve (optionally available).

Grab Bar is heavy gage type 304 stainless steel construction, 1-1/2" diameter x 36" long with reinforced leg to floor. Grab bar is shipped loose for mounting to wall and floor.

GUIDE SPECIFICATION

Provide and install Acorn Penal-Ware ADA Compliant Toilet for Angled Chase Wall (specify model number and options). Unit shall conform with ANSI, UFAS and ADA requirements. Toilet bowl shall be fabricated from 14 gage, type 304 stainless steel. Construction shall be seamless welded and exposed surfaces shall have a satin finish. Provide 36" long stainless steel grab bar to be located behind toilet. Toilet shall be concealed blowout jet type with an elongated bowl, a self-draining flushing rim, and an integral contoured seat. Toilet shall meet ANSI 112.19.2M requirements, using an average water consumption of 1.6 gallons per flush or less. Toilet trap shall have a minimum 3-1/2" seal that shall pass a 2-1/8" diameter ball and be fully enclosed. Cabinet interior is to be sound-deadened with fire-resistant material. Fixture shall withstand loadings of 3,000 pounds without permanent damage. Fixture shall be furnished with necessary fasteners for proper installation.

Penal-Ware® 1686: ADA Compliant - Toilet With Grab Bar For Angled Chase Wall



WALL THICKNESS AND TYPE (Must Specify)

Thickness _____ Type: ___Concrete ___Block ___Steel

MODEL NUMBER AND OPTIONS SELECTION

BASE MODEL NUMBER

1686-ADA Angled Chase Wall Toilet

TOILET ORIENTATION (Must Specify)

- AL Angled Left
- AR Angled Right

FIXTURE MOUNTING AND WASTE (Must Specify)

- 1 Off-Floor, Wall Outlet
- 2 On-Floor, Wall Outlet
- 3 On-Floor, Floor Outlet

FLUSH VALVE GPFs (Must Specify)

- 1.6 GPF
- 3.5 GPF

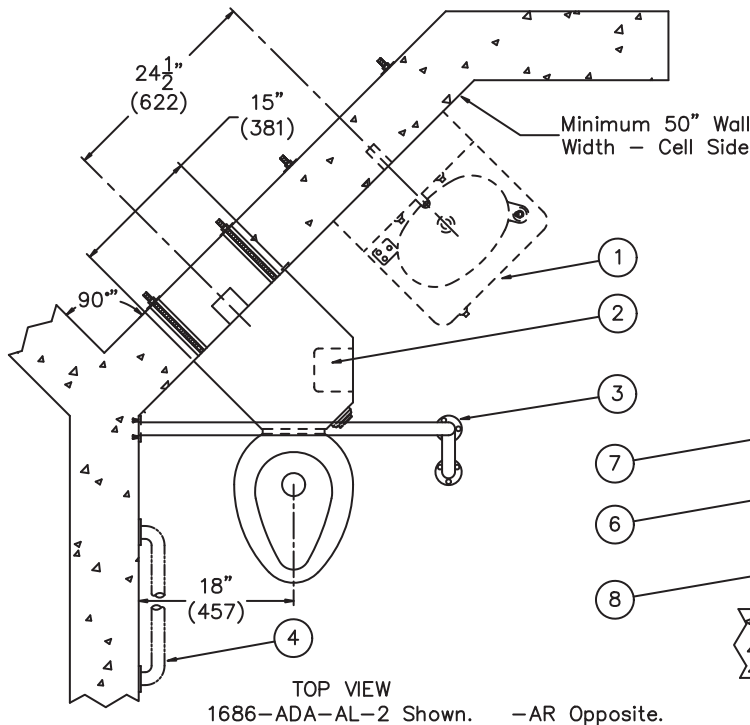
FLUSH VALVE OPTIONS (Must Specify)

- Flush Valve by Others
- EVSVV Master-Trol Flush Valve
- FVH Flush Valve, Hydraulic
- MVCFV Time-Trol Flush Valve

Product Options

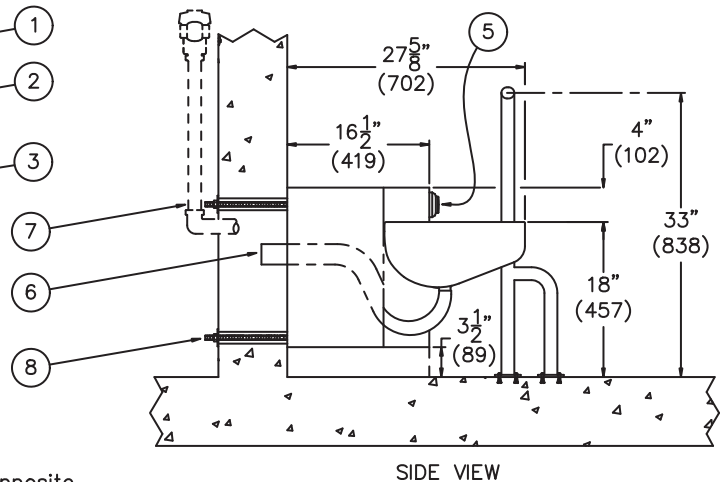
- Co1 Cleanout w/O-Ring, Connecting to No-Hub ___3" ___4"
- COH Cleanout Hook Assembly
- EG Enviro-Glaze, Specify Color: _____
 - Exterior Only (Not Inside Bowl)
 - Exterior & Inside Bowl
- FT Flood-Trol (Manual Reset)
- FTA Flood-Trol Auto-reset
- FTE Flood-Trol Electronic
- FVT Flush Valve Thru Wall Connector
- GW Gasketed Toilet Waste
- HPS High Polish Seat #7 Finish
- HS Hinged Seat
- LGB Less Grab Bar
- MT Metal Template (Only 1 Required Per Project)
- PC Pinned Cleanout Plug
- PH Paper Holder (Opposite Toilet)
- SPS Suicide Prevention Skirt (On-Floor Models)
- SW Wall Sleeve
- TF Transformer, 120VAC to 24VAC
- TG 12-Gage Cabinet
- TSC Toilet Shipping Cover
- TWE Toilet Waste Extension (3" Standard) Specify Length Beyond Fixture _____
- VAC Acorn Vac System
- VG1 Ventilation Grille 5-3/4" x 8-3/4" ___Left ___Right
- WO3 3" Toilet P-Trap (3.5 GPF Only)
- WO3B 3" Bell Waste Outlet

Please visit www.acorneng.com for most current specifications.



NOTES:

1. 1652-ADA Lavy Shown for Reference.
2. Optional -PH Recessed Paper Holder.
3. Grab Bar - 36".
4. Required 42" Grab Bar (By Others).
5. Flush Valve Pushbutton.
6. Toilet Waste Outlet.
7. Optional -FV Flush Valve.
8. Wall Mounting Hardware.



<p>Important: Installation instructions and current rough-in are furnished with each fixture. Do not rough in without certified dimensions. Dimensions are subject to manufacturer's tolerance of plus or minus 1/4" and change without notice. Acorn assumes no responsibility for use of void or superseded data. © Copyright 2008 Acorn Engineering Company</p>	
<p style="text-align: center;">Selection Summary</p> <p>Model No. & Option _____</p> <p>Quantity _____</p>	<p style="text-align: center;">Approved for Manufacturing</p> <p>Company _____ Title _____</p> <p>Signature _____ Date _____</p>