



Penal-Ware® 1698 Series Squat Toilet



1698-W-3

Fixture May Show Some Available Options

Please visit www.acorneng.com for most current specifications.

Squat Toilet

Squat Toilet intended to be recessed in the floor.

Fixture is fabricated from one piece of 18 gage, type 304 stainless steel with exposed surfaces polished to a finish. Toilet includes a mushroom style rinser with a 3/4" NPS male connection. Toilet waste outlet is 3" O.D. plain end.

GUIDE SPECIFICATION

Provide and install Acorn Penal-Ware Squat Toilet. Fixture shall be fabricated from one piece of 18 gage, type 304 stainless steel with exposed surfaces polished to a satin finish. Shall have a mushroom style rinser with 3/4" NPS male connector. Bottom area shall maintain a minimum water surface. Toilet waste outlet shall be 3" O.D. plain end.



Penal-Ware® 1698: Squat Toilet

MODEL NUMBER AND OPTIONS SELECTION

BASE MODEL NUMBER

1698 Squat Toilet

SUPPLY (Must Specify)

- W Wall (Concealed)

FIXTURE MOUNTING AND WASTE (Must Specify)

- 3 On-Floor, Floor Outlet

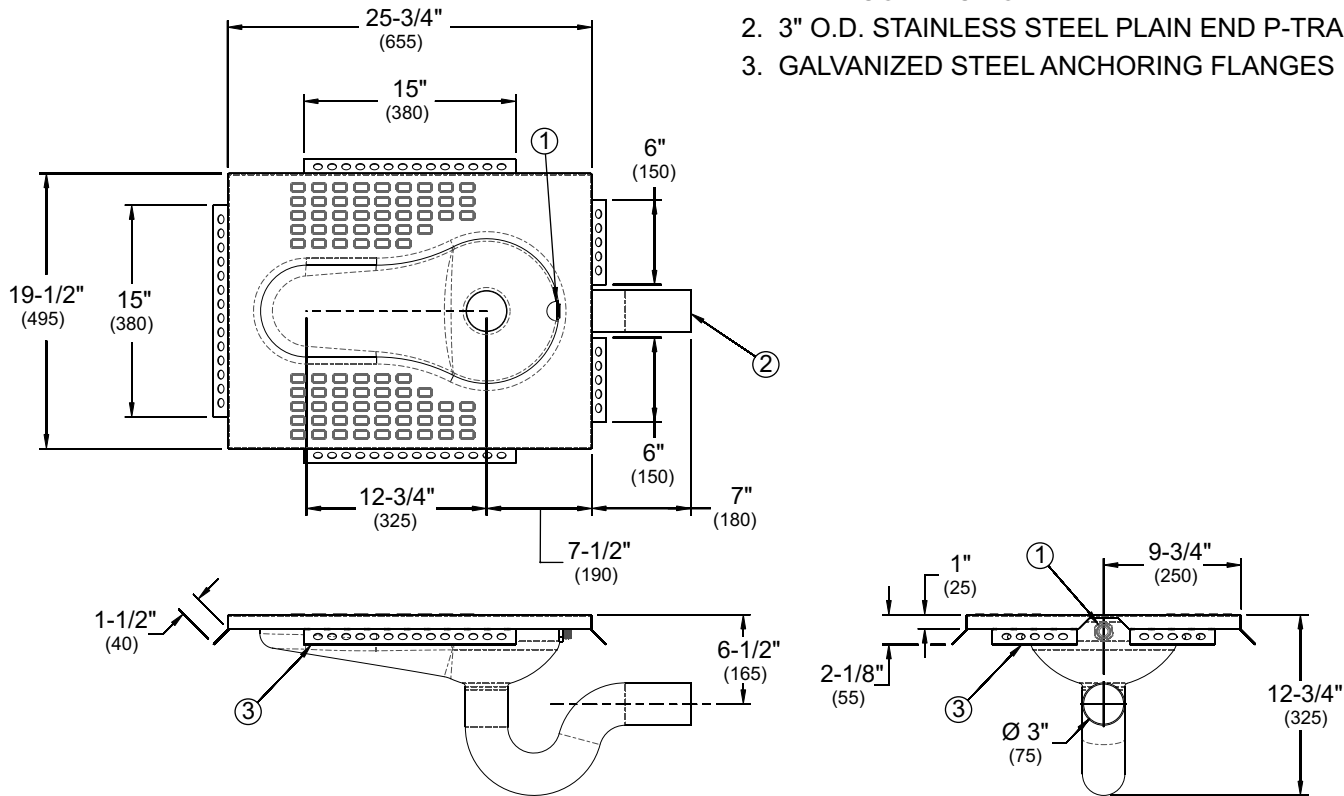
Product Options

- FV Flush Valve ___ 1.5 GPF (5.68 LPF)

Please visit www.acorneng.com for most current specifications.

NOTES:

1. MUSHROOM STYLE RINSER WITH 3/4" NPS MALE CONNECTION
2. 3" O.D. STAINLESS STEEL PLAIN END P-TRAP
3. GALVANIZED STEEL ANCHORING FLANGES



1698-W-3

<p>Important: Installation instructions and current rough-in are furnished with each fixture. Do not rough in without certified dimensions. Dimensions are subject to manufacturer's tolerance of plus or minus 1/4" and change without notice. Acorn assumes no responsibility for use of void or superseded data. © Copyright 2008 Acorn Engineering Company</p>	
<p>Selection Summary</p> <p>Model No. & Option _____</p> <p>Quantity _____</p>	<p>Approved for Manufacturing</p> <p>Company _____ Title _____</p> <p>Signature _____ Date _____</p>