



Penal-Ware® 1713 Series
Multi-Person Washout Urinal



1714-W-1

Fixture May Show Some Available Options

Please visit www.acorneng.com for most current specifications.

Multi-Person - Washout Urinal

Fixture is arranged to be installed on finished wall and serviced from an accessible pipe chase. Optional Wall Sleeve or Metal Template is recommended for all installations for required wall openings. Fixture is fabricated from 14 gage, type 304 stainless steel and is seamless welded construction. Exterior has a satin finish. Interior has a matte finish. Fixture is back wall washdown type, and is optionally available with a continuous flushing rim that washes all four walls. Corners are coved to facilitate cleaning. P-trap is fully enclosed. Back of fixture is sound-deadened with fire-resistant material.

Urinal is washout type with back wall washdown. Flushing inlet connection is 3/4" NPT male. Bottom is sloped to an integral high capacity stainless steel beehive dome strainer. P-trap has a minimum of 2" seal. Note: Models using 3.5 flush valve, flushing inlet connection is 1-1/2" NPT male.

Mounting Hardware is furnished for walls up to 8" thick.

GUIDE SPECIFICATION

Provide and install Acorn Penal-Ware Multi-Person Washout Urinal (specify model number and options). Fixture shall be fabricated from 14 gage, type 304 stainless steel and shall have a fully enclosed trap. Construction shall be seamless welded and exposed exterior surfaces shall have a satin finish. Fixture shall be back wall washdown type, and shall have coved corners to facilitate cleaning. Bottom shall be sloped to an integral high capacity stainless steel beehive dome strainer. P-trap shall be fully enclosed. Fixture shall be furnished with necessary fasteners for proper installation.



Penal-Ware® : 1713 Multi-Person - Washout Urinal

WALL THICKNESS AND TYPE (Must Specify)

Thickness _____ Type: ___ Concrete ___ Block ___ Steel

MODEL NUMBER AND OPTIONS SELECTION

BASE MODEL NUMBER

- 1713 3' Multi-Person - Washout Urinal
- 1714 4' Multi-Person - Washout Urinal
- 1715 5' Multi-Person - Washout Urinal
- 1716 6' Multi-Person - Washout Urinal
- 1718 8' Multi-Person - Washout Urinal

SUPPLY (Must Specify)

- T Top (Exposed)
- W Wall (Concealed)

FIXTURE MOUNTING AND WASTE (Must Specify)

- 1 Off-Floor, Wall Outlet

FLUSH VALVE GPF's (Must Specify)

- 1.5 GPF
- 3.5 GPF (Required for 1716-CFR & 1718-CFR)

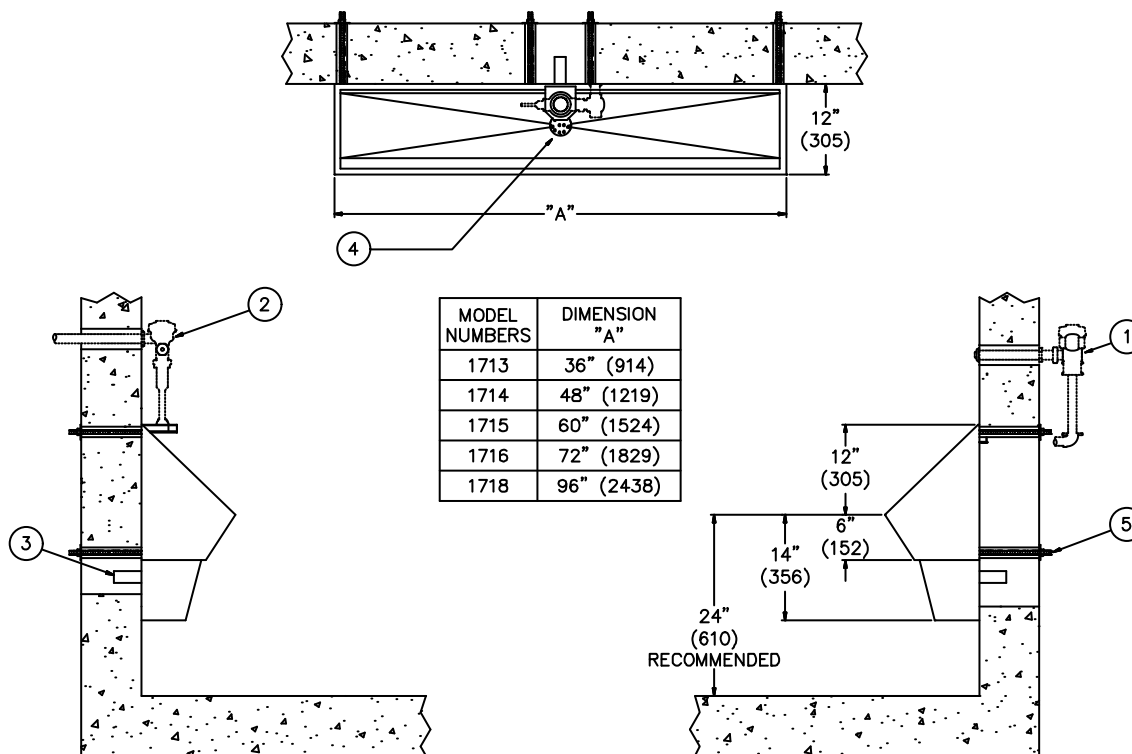
Flush Valve Options (Must Specify)

- Flush Valve by Others
- EVSFV Master-Trol Flush Valve
- FV Flush Valve
- FVC Flush Valve Cover (w/Flush Valve)
- FVCH Flush Valve Cover (w/ Hydraulic Flush Valve)
- FVH Hydraulic Flush Valve
- FVL Flush Valve w/ADA Lever Handle
- FVT Flush Valve Thru Wall Connector
- MVCFV Time-Trol Flush Valve

Product Options

- 316 316 Stainless Steel in Lieu of 304
- CFR Continuous Flushing Rim (3.5 GPF Flush Valve Required for 1716 & 1718)
- EG Enviro-Glaze, Specify Color: _____
- MT Metal Template (Only 1 Required Per Project)
- SW Wall Sleeve
- TF Transformer, 120VAC to 24VAC
- TG Twelve Gage Housing

Please visit www.acorneng.com for most current specifications.



NOTES: 1713-T-1

1. Optional -FV Flush Valve - Wall Supply.
2. Optional -FV Flush Valve - Top Supply.
3. Urinal Waste Outlet.

1713-W-1

4. Beehive Strainer.
5. Wall Mounting Hardware.

<p>Important: Installation instructions and current rough-in are furnished with each fixture. Do not rough in without certified dimensions. Dimensions are subject to manufacturer's tolerance of plus or minus 1/4" and change without notice. Acorn assumes no responsibility for use of void or superseded data. © Copyright 2006 Acorn Engineering Company</p>	
<p style="text-align: center;">Selection Summary</p> <p>Model No. & Option _____</p> <p>Quantity _____</p>	<p style="text-align: center;">Approved for Manufacturing</p> <p>Company _____ Title _____</p> <p>Signature _____ Date _____</p>