



## Shower-Ware® 1109 Series

Grab Bars - Suicide Resistant



1109-4 & 1109-5

Fixture May Show Some Available Options

Please visit [www.acorneng.com](http://www.acorneng.com) for most current specifications.

### Grab Bars - Suicide Resistant

**Grab Bars** are designed to meet the needs of the disabled. Grab bars are constructed of 1-1/2" outer diameter type 304 stainless steel tubing with a 14 gage closure plate welded to the bottom of the bar. The fixture's exposed surfaces are polished to a satin finish and include 3" diameter wall flanges countersunk for furnished 2" long stainless steel vandal-resistant screws. Grab bars meet or exceed ANSI, UFAS and ADA requirements for structural strength and have a 1-1/2" space between the grab bar and the mounting surface. Selection of appropriate length, configuration, adequate wall backing and installation dependent on application will determine compliance for accessibility. Consult applicable codes for complete requirements. Compliance is subject to the interpretation and requirements of the local code authority. Grab bars are not recommended for installation in areas of high security.

# Shower-Ware® 1109: Grab Bars - Suicide Resistant



## MODEL NUMBER AND OPTIONS SELECTION

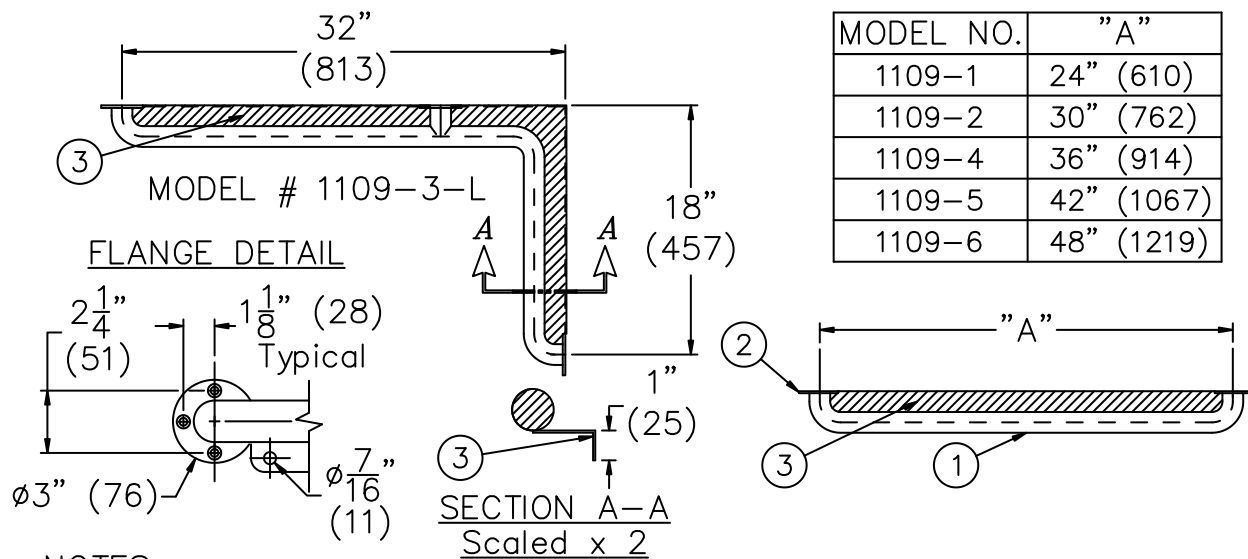
## Product Options

\* None Available

### BASE MODEL NUMBER

- 1109-1 Grab Bar with Closure Plate, 24" Long
- 1109-2 Grab Bar with Closure Plate, 30" Long
- 1109-3 Two-Wall Grab Bar with Closure Plate,
  - L Left Orientation, 32" x 18" Long
  - R Right Orientation, 18" x 32" Long
- 1109-4 Grab Bar with Closure Plate, 36" Long
- 1109-5 Grab Bar with Closure Plate, 42" Long
- 1109-6 Grab Bar with Closure Plate, 48" Long

Please visit [www.acorneng.com](http://www.acorneng.com) for most current specifications.



### NOTES:

- 1-1/2" O.D. Stainless Steel Tube.
- 3" O.D. Stainless Steel Flange.
- Intermittent Welded Closure Strip w/ Anchoring Flange.

<p><b>Important:</b> Installation instructions and current rough-in are furnished with each fixture. Do not rough in without certified dimensions. Dimensions are subject to manufacturer's tolerance of plus or minus 1/4" and change without notice. Acorn assumes no responsibility for use of void or superseded data. © Copyright 2007 Acorn Engineering Company</p>	
<p>Selection Summary</p> <p>Model No. &amp; Option _____</p> <p>Quantity _____</p>	<p>Approved for Manufacturing</p> <p>Company _____ Title _____</p> <p>Signature _____ Date _____</p>