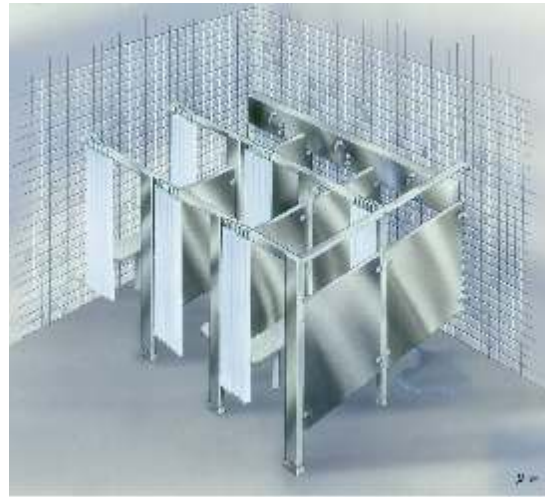




Shower-Ware® 110MS Series

Diana Modular Privacy Compartments for Acme Type 1 Wall Showers



111-W-MS

Fixture May Show Some Available Options

Please visit www.acorneng.com for most current specifications.

Diana Modular Privacy Compartments for Acme Type 1 Wall Showers

- **MS** Stainless Steel Modular Privacy Compartments provide a bathing area for each shower station.

Hardware for each compartment includes posts, headrails, brackets, and escutcheons. All hardware is vandal-resistant.

Curtains are white Herculite® material.

Panels for - MS are constructed using structural honeycomb core firmly cemented to the stainless steel panels. Formed molding interlocks panel edges under tension. Corners are welded and polished.

Posts are provided with a jackscrew type leveling system which is concealed by an escutcheon.

Dressing Compartments, when required, must be shown on contract drawings. Note: Submittal drawings must be provided by Acorn. The following should be added to the base specification for Acme Type 1 Wall Showers.

BRIEF SPECIFICATION

Provide and install Acorn Diana Modular Privacy Compartments (example - MS Stainless Steel) as shown on contract drawings.

DETAILED SPECIFICATION

Provide and install Acorn Diana Modular Privacy Compartments (specify type) as shown on contract drawings. Provide white Herculite® shower curtain with chrome-plated hooks for each Privacy Compartment and Dressing Compartment entrance. Each Dressing Compartment shall be equipped with Acorn chrome-plated brass double robe hook and Acorn hardwood seat with stainless steel post.

Shower-Ware® 110MS: Diana Modular Privacy Compartments for Acme Type 1 Wall Showers



BASE MODEL NUMBER (Must Specify)

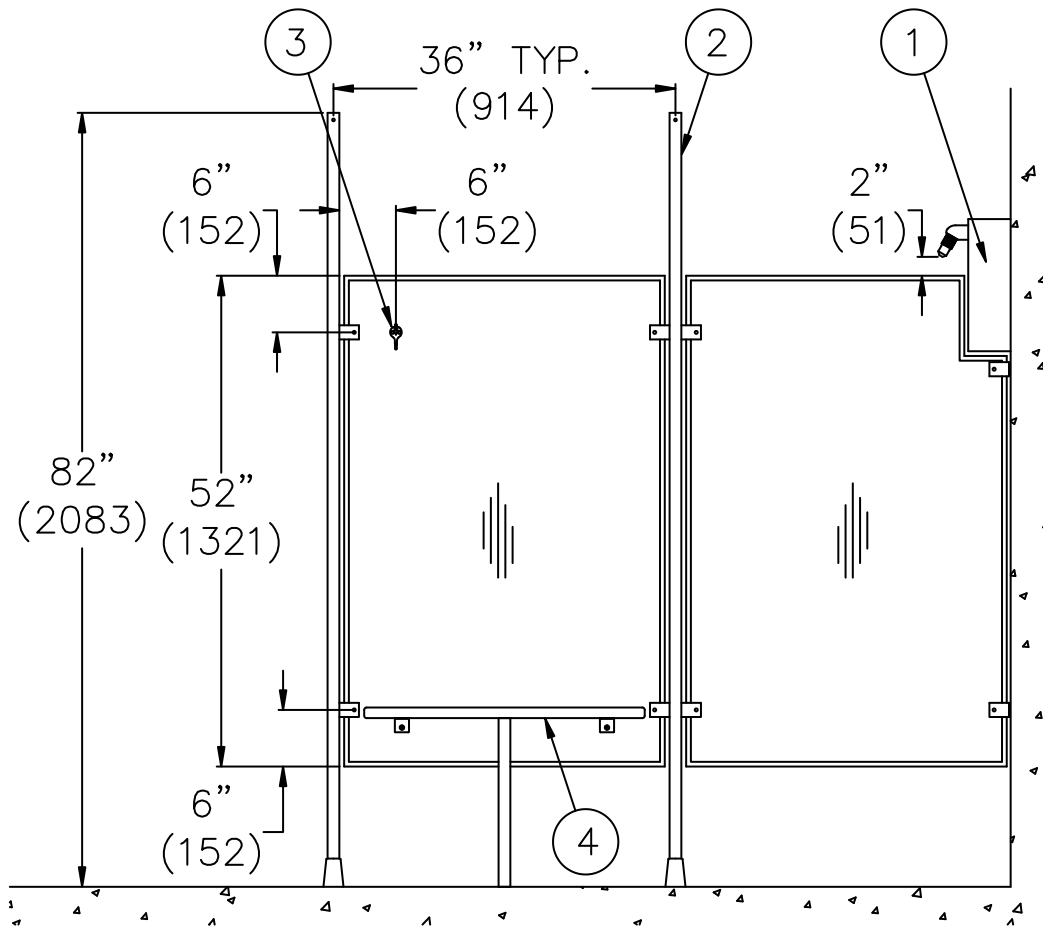
Product Options

- MS Modular Privacy Compartments (Stainless Steel)

None

Note: Factory Created Compartment Layout Required.

Please visit www.acorneng.com for most current specifications.



NOTES:

MODEL# 110-MS SERIES

- 1. Acme Wall Mounted Shower.
- 2. Post/Pilaster.
- 3. Robe Hook.
- 4. Teakwood Seat.

<p>Important: Installation instructions and current rough-in are furnished with each fixture. Do not rough in without certified dimensions. Dimensions are subject to manufacturer's tolerance of plus or minus 1/4" and change without notice. Acorn assumes no responsibility for use of void or superseded data. © Copyright 2007 Acorn Engineering Company</p>	
<p style="text-align: center;">Selection Summary</p> <p>Model No. & Option _____</p> <p>Quantity _____</p>	<p style="text-align: center;">Approved for Manufacturing</p> <p>Company _____ Title _____</p> <p>Signature _____ Date _____</p>