



## Shower-Ware® 2920 Series

Flush-Mounted Gravity Soap Tanks



2920-5

Fixture May Show Some Available Options

Please visit [www.acorneng.com](http://www.acorneng.com) for most current specifications.

### Flush-Mounted Stainless Steel Remote Gravity Soap Tanks

**Tanks** are fabricated of 22 gage, type 304 stainless steel. Removable front panel is fabricated of 16 gage, type 304 stainless steel with exposed surface polished to a satin finish.

**Tank Outlet** is 3/8" NPT female adapter for piping by others.

**Soap Filler** is vandal-resistant chrome-plated brass and is designed for easy refilling of unit from the front, without having to remove panel.

**Twin Soapsite Gages** are designed to indicate soap level.

**Regularly Furnished** items include soap tank with top vent holes, 3/8" NPT female tank outlet, soap filler, twin soapsite gages, plaster flanges, and front panel with vandal-resistant screws.

#### GUIDE SPECIFICATION

Provide and install Acorn Flush-Mounted Stainless Steel Remote Gravity Soap Tank (specify model number). Tank shall be 22 gage, type 304 stainless steel with top vent holes. Removable front panel shall be 16 gage, type 304 stainless steel with satin finish. Tank outlet to be 3/8" NPT female for piping by others. Front soap filler to be chrome-plated brass. Tank to include two twin soapsite gages to indicate soap level.

# Shower-Ware®: 2920 Flush-Mounted Stainless Steel Remote Gravity Soap Tanks



## MODEL NUMBER AND OPTIONS SELECTION

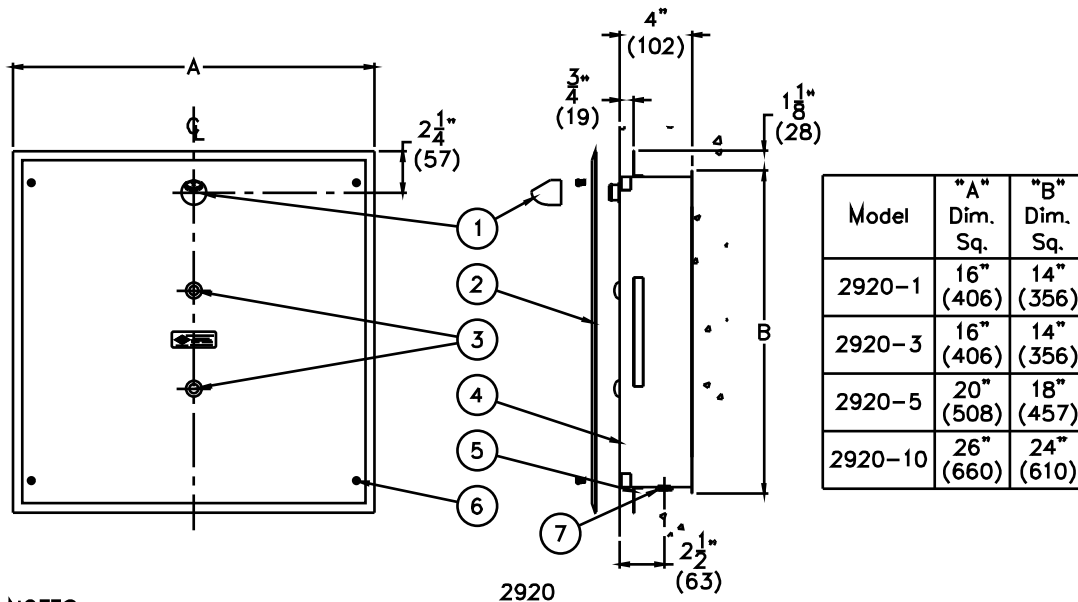
## Product Options

### BASE MODEL NUMBER

- 2920-1 One Gallon Flush-Mounted Soap Tank
- 2920-3 Three Gallon Flush-Mounted Soap Tank
- 2920-5 Five Gallon Flush-Mounted Soap Tank
- 2920-10 Ten Gallon Flush-Mounted Soap Tank

- \* None Available

Please visit [www.acorneng.com](http://www.acorneng.com) for most current specifications.



### NOTES:

- 1. Soap Filler.
- 2. Front Panel.
- 3. Twin Soapsite Gages.
- 4. Soap Tank.
- 5. Plaster Flange (4).
- 6. Vandal-Resistant Screws.
- 7. 3/8" NPT Female Outlet.

<p><b>Important:</b> Installation instructions and current rough-in are furnished with each fixture. Do not rough in without certified dimensions. Dimensions are subject to manufacturer's tolerance of plus or minus 1/4" and change without notice. Acorn assumes no responsibility for use of void or superseded data. © Copyright 2004 Acorn Engineering Company</p>	
<p>Selection Summary</p> <p>Model No. &amp; Option _____</p> <p>Quantity _____</p>	<p>Approved for Manufacturing</p> <p>Company _____ Title _____</p> <p>Signature _____ Date _____</p>