



## Shower-Ware® 460DS Series

Diana Circular Privacy Compartments for Apex Type 6 Two Station and Type 7 Three Station Showers



475-W-DS

Fixture May Show Some Available Options

Please visit [www.acorneng.com](http://www.acorneng.com) for most current specifications.

### Diana Circular Privacy Compartments for Apex Type 6 Two Station and Type 7 Three Station Showers

- **DS** Stainless Steel Circular Privacy Compartments provide a bathing area at each shower station.

**Hardware** for each compartment includes posts, headrails, brackets, and escutcheons. All hardware is vandal-resistant.

**Curtains** are white Herculite® material.

**Panels for - DS** are constructed using structural honeycomb core firmly cemented to the stainless steel panels. Formed molding interlocks panel edges under tension. Corners are welded and polished.

**Posts** are provided with a jackscrew type leveling system which is concealed by an escutcheon.

**Shower Compartments** are available with suffix - HC Handicapped Shower option. Folding seat is not furnished with this combination. The following should be added to the base specification for Apex Type 6 Two Station and Type 7 Three Station Showers.

#### BRIEF SPECIFICATION

Provide and install Acorn Diana Circular Privacy Compartments (specify type: example - DS Stainless Steel) as shown on contract drawings.

#### DETAILED SPECIFICATION

Provide and install Acorn Diana Circular Privacy Compartments (specify type) as shown on contract drawings. Provide white Herculite® shower curtain with chrome-plated hooks at each Privacy Compartment and Dressing Compartment entrance. Privacy Compartment are available with suffix - HC Handicapped Shower option. Folding seat is not furnished with this combination.



**BASE MODEL NUMBER (Must Specify)**

- DS Circular Privacy Compartments (Stainless Steel)

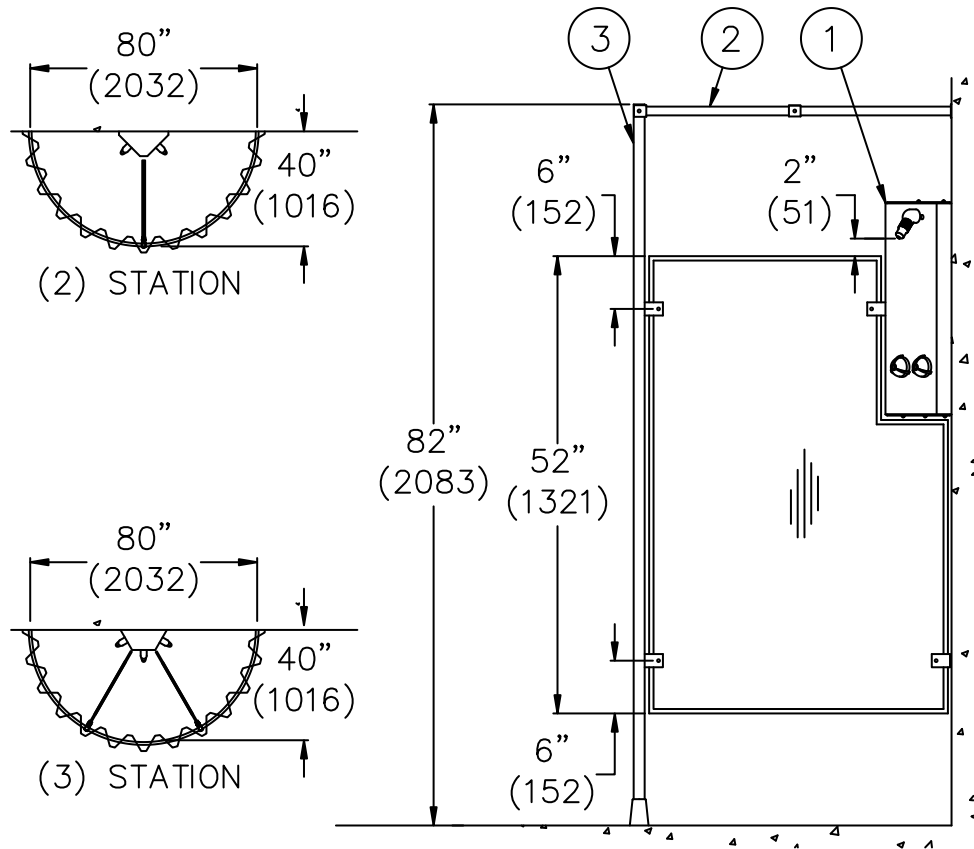
**Product Options**

None

**SHOWER TYPE (Must Specify)**

- 460 Series Two Station Apex  
 - 470 Series Three Station Apex

Please visit [www.acorneng.com](http://www.acorneng.com) for most current specifications.



MODEL# 460-DS SERIES

**NOTES:**

- 1. Apex Two Station Shower.
- 2. Headrail.
- 3. Post/Pilaster.

<p><b>Important:</b> Installation instructions and current rough-in are furnished with each fixture. Do not rough in without certified dimensions. Dimensions are subject to manufacturer's tolerance of plus or minus 1/4" and change without notice. Acorn assumes no responsibility for use of void or superseded data. © Copyright 2007 Acorn Engineering Company</p>	
<p style="text-align: center;">Selection Summary</p> <p>Model No. &amp; Option _____</p> <p>Quantity _____</p>	<p style="text-align: center;">Approved for Manufacturing</p> <p>Company _____ Title _____</p> <p>Signature _____ Date _____</p>

**S.460DS**

Revised: 5/16/07