



Shower-Ware® 500ADA Series

Zenith Built-In Showers - ADA Compliant



532-ADA

Fixture May Show Some Available Options

Please visit www.acorneng.com for most current specifications.

Zenith Built-In Showers - ADA Compliant

Shower includes an ADA compliant control valve with lever handle or pushbutton, wall mounted shower head, hand shower with vacuum breaker and flow control, a lever handle diverter valve, recessed soap dish, a two-wall stainless steel grab bar and a 1103 series padded vinyl folding seat. Unit conforms with ANSI, UFAS and ADA requirements for accessibility. Compliance is subject to the interpretation and requirements of the local code authority.

Piping between valve and shower head is furnished by others for -3 Safti-Therm Temperature Balancing and -5 Flo-Cloz Single Temperature valves.

Reach. All controls, soap dish, etc., must be 38" to 48" from the finished floor to be within reach of a seated bather with limited arm movement.

Shower Heads. A shower head on a five foot stainless steel hose (hand shower) is provided for seated bathers. A conventional fixed shower head is also provided at 6'-0" discharge height. Shower head is solid brass, triple chrome-plated and include built-in 2.5 GPM flow restrictor. The Acorn Logan Wizard Shower Head design provides self-cleaning with every use, and has an adjustable spray pattern from a coarse stream to a fine mist.

Valves. Disabled bathers should be provided with protection against sudden hot or cold "shock." Pressure balancing valves such as our Safti-Trol are often required and are strongly recommended. Indicate valve by selection of appropriate Shower-Ware® figure numbers.

Seat and Privacy Compartments. Disabled bathers understandably should be given privacy while bathing. In addition, there is the requirement to provide a seat opposite the controls. This suggests constructing an alcove, partial wall or providing a reinforced privacy panel for mounting the seat (suffix option -RP).

GUIDE SPECIFICATION

Provide and install an Acorn Zenith Built-In, ADA Compliant Shower (specify model number and options). Valve body and shower head shall be solid brass with all exposed parts triple chrome-plated or polished stainless steel. Fixture shall be furnished with an ADA compliant control valve with lever handle or pushbutton, wall mounted shower head, hand shower with vacuum breaker and flow control, a lever handle diverter valve, recessed soap dish, a two-wall stainless steel grab bar and a padded vinyl folding seat. Units to conform with ANSI, UFAS and ADA requirements for accessibility.

Page # **S.500ADA**

Revised: 10/16/06

Shower-Ware®: 500ADA Zenith Built-In Showers - ADA Compliant



MODEL NUMBER AND OPTIONS SELECTION

SERIES (Must Specify)

-5 - Zenith

SUPPLY (Must Specify)

- 1 - Back Supply (-5 Flo-Cloz Only)
 -3 - Top or Bottom Supply

VALVE SELECTION (Must Specify)

- 0-ADA Electronic Valves, Single Temp Metering
 -2-ADA Safti-Trol, H & C Pressure Balancing
 -3-ADA Safti-Therm, H & C Temperature Balancing
 -4-ADA Single-Trol, H & C Mixing
 -5-ADA Flo-Cloz, Single Temperature
 -6-ADA Air-Control, Single Temperature Metering

ELECTRONIC VALVE SELECTION

(Refer to Valves Section for Submittal Data)

- EVS1 Electronic Valve System - Single Temp
 -MVC1 Time-Trol - Single Temp

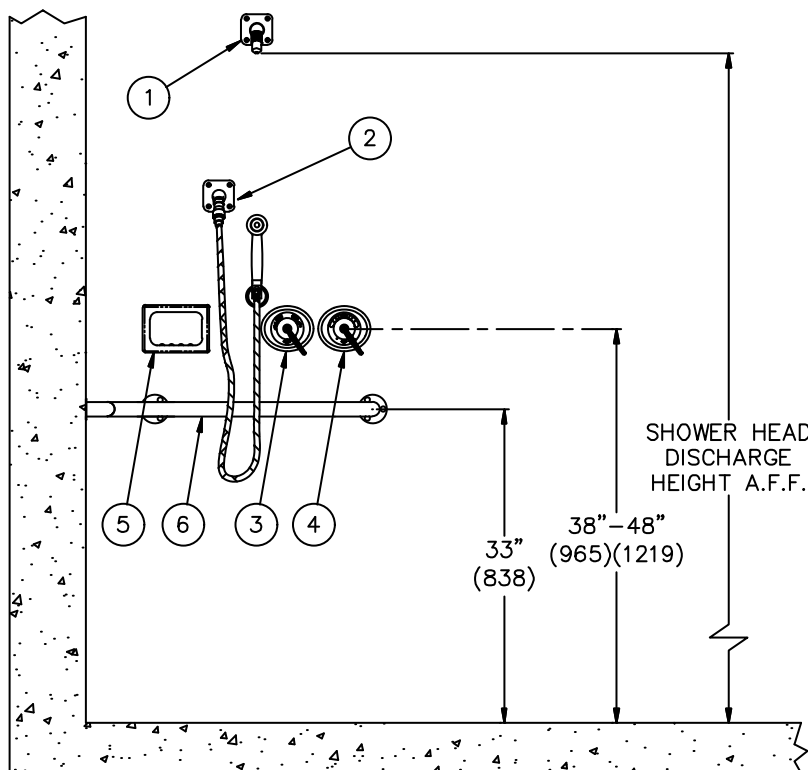
SEAT ORIENTATION (Must Specify)

___ Left ___ Right

Product Options

- A Anchor Plate
 -B Back Plate
 -BA Bent Arm Head
 -BAT Battery Operated (-MVC1)
 -CH Curtain with Headrail - 36" Opening
 -CSH Conical Shower Head
 -F Flow Control 2.0 GPM
 -FH Fixed Head at 48" in Lieu of Hand Shower
 -G Individual Stops
 -GX Individual Check stops
 -H Hand Volume Control
 -HL Hi-Lo Mounting Brackets (For Handshower)
 -K Allen Key Volume Control
 -LFS Less Padded Folding Seat
 -LGB Less Grab Bar
 -LRD Less Recessed Soap Dish
 -MS Modular Privacy Compartments (See Diana Privacy Tab)
 -MSH Multi-Stream Shower Head
 -P Penal Shower Head
 -PBH Hemispherical Pushbutton
 -PO Piston-Operated Safti-Trol Valve
 -QD Quick Disconnect for Hand Shower
 -RP Reinforced Panel for Folding Seat with Curtain
 -SB Slide Bar
 -Y Universal Ball Joint
 -YY Lockable Universal Ball Joint
 -Z Up-Down Ball Joint
 -ZZ Lockable Up-Down Ball Joint

Please visit www.acorneng.com for most current specifications.



NOTES:

1. Flanged Shower Head.
2. Handshower Mounting Bracket.
3. Diverter Valve with Lever Handle.
4. Control Valve.
5. Recessed Soap Dish.
6. Two Wall Grab Bar.

MODEL# 532-ADA

Important: Installation instructions and current rough-in are furnished with each fixture. Do not rough in without certified dimensions. Dimensions are subject to manufacturer's tolerance of plus or minus 1/4" and change without notice. Acorn assumes no responsibility for use of void or superseded data. © Copyright 2006 Acorn Engineering Company	
<p style="text-align: center;">Selection Summary</p> Model No. & Option _____ Quantity _____	<p style="text-align: center;">Approved for Manufacturing</p> Company _____ Title _____ Signature _____ Date _____