



Scrub-Ware® 4102 Series Surgical Scrub Sink - Two Station



4102-MC-PDM-SA

Fixture May Show Some Available Options

Surgical Scrub Sink - Two Stations

Acorn 4102 Surgical Scrub Sink is designed for use in health care institutions providing surgeons with a convenient sink for pre-op scrub up.

Fixture is fabricated from heavy gage, type 304 stainless steel and is seamless welded construction polished to a satin finish. The cabinet interior is sound-deadened with a fire-resistant material. The unit is designed to be installed on the wall using a mounting carrier or it can be floor mounted on a stainless steel pedestal base.

Scrub Sinks are provided with front panels which are easily removed for access to the water control valves, waste connections, stops and strainers. Scrub sinks have a sloping bottom surface to minimize splashing and a 1-1/2" OD tailpiece with a 3" flat strainer drain.

Backsplash has a gooseneck assembly with a 1-1/2" sprayhead that can be removed for sterilization.

Thermostatic Mixing Valve Control is located on each control panel and maintains a constant water temperature. This easily adjustable, anti-scald valve will automatically shut off if the hot or cold water supply fails.

Water Supply Valves are mechanical pilot type, actuated by one push of a knee-operated front panel and turned off by a second push.

GUIDE SPECIFICATION

Provide an Acorn Two Station Surgical Scrub Sink (specify model number and options) 63-1/2" wide. Fixture shall be fabricated from heavy gage, type 304 stainless steel, with seamless welded construction polished to a satin finish. Cabinet interior shall have a sound-deadening, fire-resistant material. Cabinet shall also have removable panels to allow access to water control valves, waste connections, stops and strainers. Sinks shall have a sloping bottom to minimize splashing, and a 3" flat strainer drain. Goosenecks shall have a removable 1-1/2" sprayhead. Fixture shall have thermostatic mixing valves which are easily adjustable at the control panels. Manufacturer shall provide necessary installation instructions.

Scrub-Ware®: 4102 Surgical Scrub Sink - Two Station



MODEL NUMBER AND OPTIONS

SELECTION SERIES

-4102 Surgical Scrub Sink (2 Stations)

MOUNTING

-MC Mounting Carrier (Off-Floor Installation)

-PB Pedestal Base (On-Floor Installation)

Product Options

-DTD Digital Time Display

-ETC Electronic Timing Controller

-LM Light Module

-PDM Metering Liquid Soap Dispenser

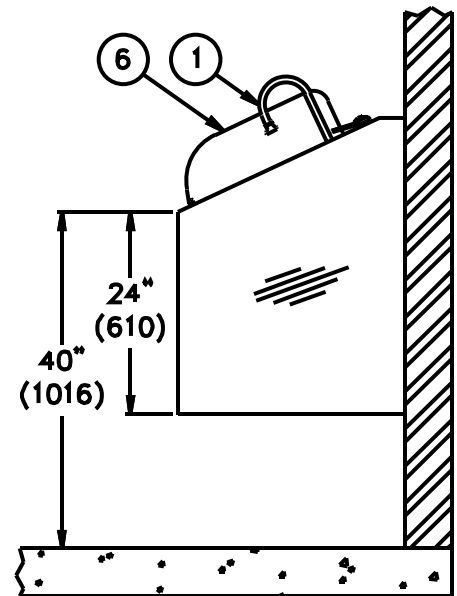
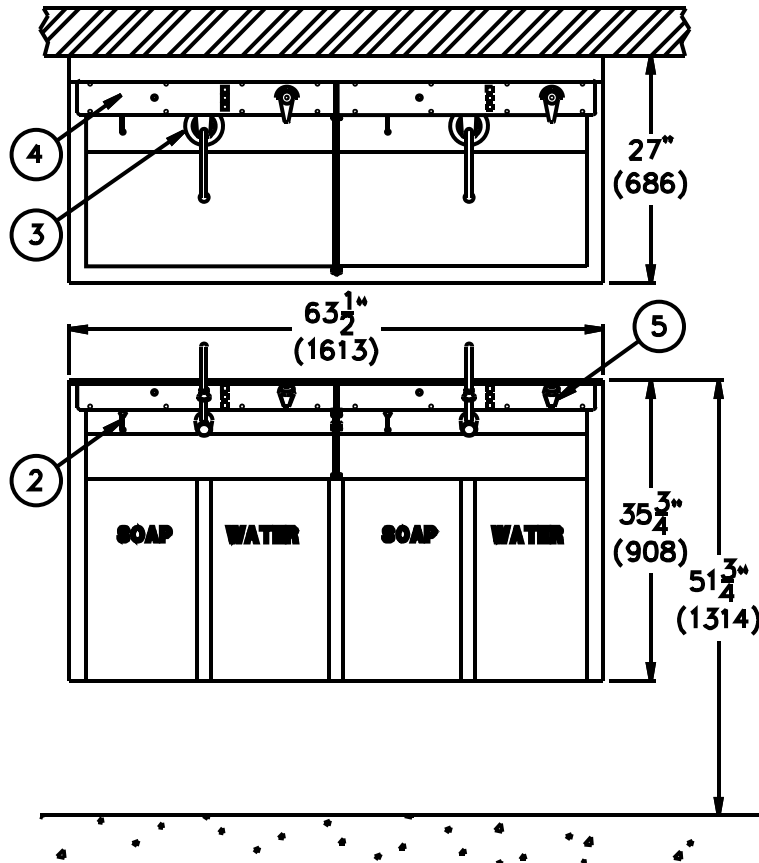
-SA Splash Panel

-SFS Soap Flush System

-SO Sensor Operated

-SS Storage Shelf

-SWV Swivel Nozzle on Gooseneck



NOTES:

1. Gooseneck Spout Assembly.
2. Optional -PDM Soap Dispenser.
3. Flat Strainer Drain.

4. Control Panel.
5. Thermostatic Mixing Valve.
6. Optional -SA Splash Panel.

MODEL# 4102-MC

| | |
|--|--|
| <p>Important: Installation instructions and current rough-in are furnished with each fixture. Do not rough in without certified dimensions. Dimensions are subject to manufacturer's tolerance of plus or minus 1/4" and change without notice. Acorn assumes no responsibility for use of void or superseded data. © Copyright 2004 Acorn Engineering Company</p> | |
| <p style="text-align: center;">Selection Summary</p> <p>Model No. & Option _____</p> <p>Quantity _____</p> | <p style="text-align: center;">Approved for Manufacturing</p> <p>Company _____ Title _____</p> <p>Signature _____ Date _____</p> |