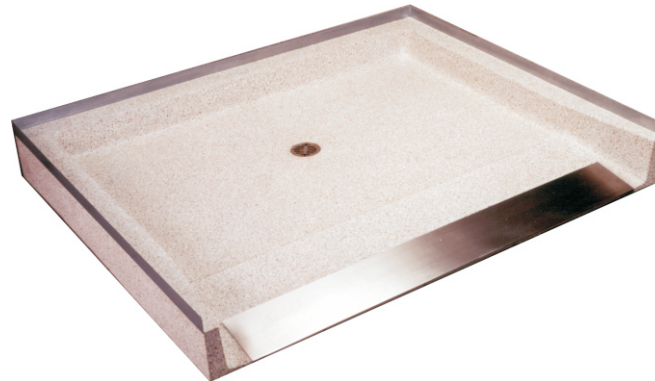




Terrazzo-Ware™ Shower Base - Wheelchair Accessible Series



SBWA-6048-3F

Fixture May Show Some Available Options

Please visit www.acorneng.com for most current specifications.

Wheelchair Accessible Shower Base

Shower Base is an attractive, easy to maintain, spacious shower receptacle. It is designed for durability and ease of installation. With its integral threshold it addresses the needs of the physically challenged. **ACORN Terrazzo-Ware™** precast shower bases provide flexibility in configuration and size as required by the design of the building and the specific installation. Custom sizes and colors are also available.

Integral Ramp Threshold provides an attractive entry into the shower. The 12" wide 9° pitched threshold is designed with a 6" wide stainless steel cap for protection. We recommend a floor drain be provided by others near the entrance. The sides and rear of the fixture come with galvanized tiling flanges extending 1½" above the shoulders.

Construction is one piece, precast terrazzo composed of marble chips cast in Portland cement to provide a compressive strength of at least 3,000 PSI seven days after casting. The shower base surface is ground smooth and sealed for years of service.

Integral Drain is supplied with a removable, stainless steel grid strainer and provides for an inside caulked connection to a 2" pipe. The shower base has coved corners and is pitched to the drain outlet to provide positive drainage. A vandal resistant strainer is optionally available.

GUIDE SPECIFICATION

Provide and install an **ACORN Non ADA Compliant Wheelchair Accessible Shower Base** (specify model number and options). Shower Base shall have a stainless steel covered cap on a integral ramp threshold. Shower Base shall be made of precast terrazzo to produce a compressive strength of not less than 3,000 PSI seven days after casting. Base shall be ground smooth and sealed. No air holes or pits shall be allowed on the finished surface. Base shall have coved corners and be pitched to the drain outlet for positive drainage. Integral drain shall have a stainless steel strainer and provide for an inside caulked connection to a 2" pipe. The manufacturer will provide to the installer the necessary installation instructions.

Terrazzo-Ware™: Shower Base-Wheelchair Accessible Series



BASE MODEL

SIZE & TYPE (must specify) SQUARE

- SBWA-36-3F** 36" Square Terrazzo Wheel Chair Accessible Shower Base, Three Side Flanged
- SBWA-48-3F** 48" Square Terrazzo Wheel Chair Accessible Shower Base, Three Side Flanged
- SBWA-60-3F** 60" Square Terrazzo Wheel Chair Accessible Shower Base, Three Side Flanged

RECTANGULAR

- SBWA-6048-3F** 60" x 48" Rectangular Terrazzo Wheel Chair Accessible Shower Base, Three Side Flanged
- SBWA-4270-3F** 42" x 70" Rectangular Terrazzo Wheel Chair Accessible Shower Base, Three Side Flanged
- SBWA-4870-3F** 48" x 70" Rectangular Terrazzo Wheel Chair Accessible Shower Base, Three Side Flanged
- SBWA-6070-3F** 60" x 70" Rectangular Terrazzo Wheel Chair Accessible Shower Base, Three Side Flanged

SUFFIX OPTIONS

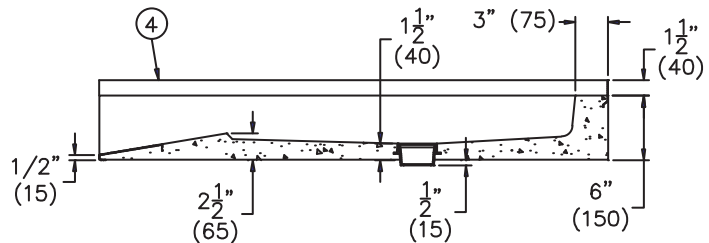
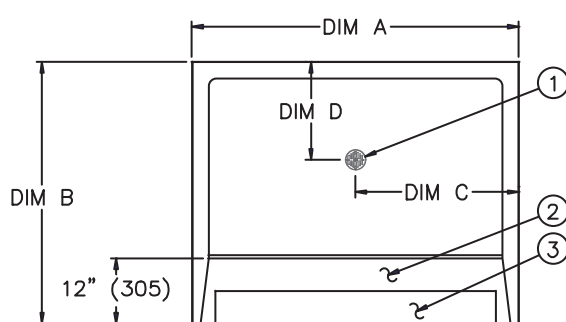
- OC Optional Colors (contact factory)
- VRS Vandal Resistant Strainer

ACCESSORIES

- KDG2 Rubber Drain Gasket for 2" Waste Pipe

Please visit www.acorneng.com for most current specifications.

MODEL NUMBER	TYPE	SIZES/DIMENSIONS			
		A – LENGTH	B – WIDTH	C	D
SBWA-36-3F	SQUARE	36" (915)	–	18" (455)	12" (305)
SBWA-48-3F	SQUARE	48" (1220)	–	24" (610)	18" (455)
SBWA-60-3F	SQUARE	60" (1525)	–	30" (760)	24" (610)
SBWA-4270-3F	RECTANGULAR	42" (1065)	70" (1780)	21" (535)	9" (229)
SBWA-4870-3F	RECTANGULAR	48" (1220)	70" (1780)	24" (610)	9" (229)
SBWA-6048-3F	RECTANGULAR	60" (1525)	48" (1220)	30" (760)	18" (457)
SBWA-6070-3F	RECTANGULAR	60" (1525)	70" (1780)	30" (760)	9" (229)



TERRAZZO-WARE WHEELCHAIR ACCESSIBLE SERIES CORNER SHOWER BASES

NOTE:

1. Integral drain with removable grid strainer. Drain provides an inside connection to 2" pipe.
2. Ramp.
3. Stainless steel ramp guard.
4. Tiling flange.

<p>Important: Installation instructions and current rough-in are furnished with each fixture. Do not rough in without certified dimensions. Dimensions are subject to manufacturer's tolerance of plus or minus 1/4" and change without notice. Acorn assumes no responsibility for use of void or superseded data. © Copyright 2003 Acorn Engineering Company</p>	
<p>Selection Summary</p> <p>Model No. & Option _____</p> <p>Quantity _____</p>	<p>Approved for Manufacturing</p> <p>Company _____ Title _____</p> <p>Signature _____ Date _____</p>