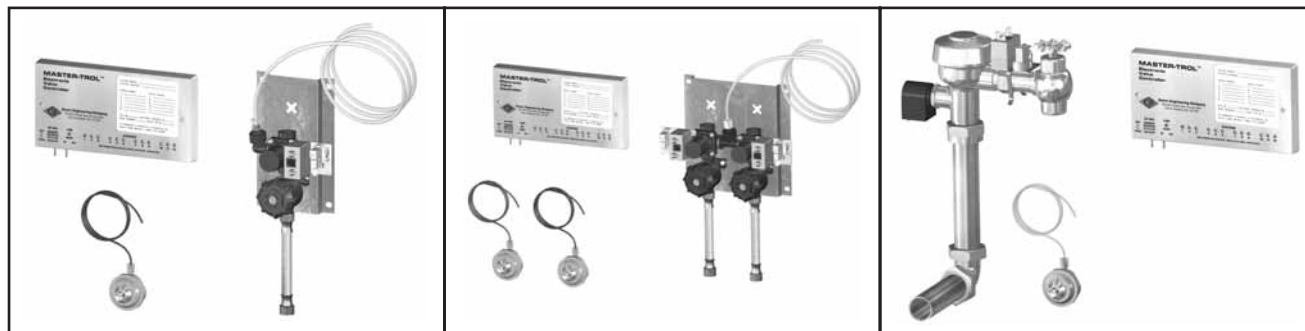




Valves: EVS Series

Master-Trol Valve Selection



-EVS1

-EVS2

-EVS-FV

Graphic May Show Some Available Options

Please visit www.acorneng.com for most current specifications.

Master-Trol Valve Selection

This sheet to be used in conjunction with EVS Master-Trol Basic System Overview submittal.

Valve Suffix Option -EVS, Electronic Valve System provides an Acorn Master-Trol System for water metering through precise electronic control of the solenoid valve provided. Solenoid valve is a 24 VAC slow closing, anti water-hammer type. This valve should always be supported by a thermostatic controller at the hot water source.

Flush Valve Suffix Option -EVS-FV, Electronic Valve System provides an Acorn Master-Trol System for limiting frequency of flush valve operation through precise electronic control of a 24 VAC, 60 Hz UL/CSA listed solenoid operated flush valve with factory installed branch box.

The Electronic Valve Controller is capable of directing 12 valves simultaneously. The controller is preprogrammed by Acorn or programmed in the field with the use of an optional computer. Each controller is powered by a 24 VAC 50 VA Class 2 UL/CSA listed transformer (supplied by Acorn). Programmed settings will be retained in controller regardless of loss of power.

Versa-Link is the communication interface between the computer and the electronic valve controller(s). With the ability to link 32 controllers together, one link controls as many as 384 valves. Each link can be up to 4,000 feet long. Each desktop computer has the capacity to service 8 individual Versa-Links, which gives each system the capacity to support a total of 3,072 valves.

Optional Computer. Valve data from each individual Versa-Link can be displayed simultaneously on the optional desktop computer allowing quick overview and programming of valves. Additional Versa-Link(s) data can be viewed with automatic scrolling on demand. Linking of the controller to the computer is by others.

Branch Box is the interface between the controller, solenoid valve and pushbutton. The communication link between the electronic valve controller and branch box requires the use of six conductor phone cable with modular phone plugs (15 feet supplied by Acorn).

Stainless Steel Pushbutton pneumatically actuates a momentary air switch with no electricity at pushbutton, allowing solenoid valve to open.

Specification with Column Showers requires that controllers be located remotely and electronic valves must be positioned either: 1) above unit within optional -SC Supply Cover, 2) within a top valve cover, or 3) also located remotely.

GUIDE SPECIFICATION - Add to fixture specification following model number selected:

For Water Metering: Provide and install the Acorn Master-Trol Water Management System Option -EVS, Electronic Valve System with optional -CI, Cycle Interrupt feature. **For Flush Valve Lockout:** Provide and install the Acorn Master-Trol Water Management System Option -EVS-FV, Electronic Valve System with solenoid type flush valve. System shall include electronic valve controllers that are microprocessor driven and powered by 24 VAC 50 VA Class 2 UL/CSA listed transformer with a 3 A fuse. Electronic valve controller must be able to simultaneously direct 12 valves. An optional -CDT Desktop Computer to be interfaced with 8 Versa-Links each capable of monitoring and controlling 384 solenoid valves for a total of 3,072 valves per system. Each link can be up to 4,000 feet long. Programmed settings will be retained in controller regardless of power loss. A slow closing anti water-hammer solenoid operated valve(s) and optional -EVS-FV electronic flush valve shall be operated by means of vandal resistant stainless steel pushbutton and momentary air switch. Wiring and connectors from personal computer to electronic valve controllers by others. Station cable 15 feet long for connecting electronic valve controller to branch box to be provided by Acorn. All connectors to be quick release plug type. All components must be installed per National Electrical Code (NEC) and local codes.



Valves: EVS Series Master-Trol Valve Selection

MODEL NUMBER AND OPTIONS SELECTION

MUST SPECIFY NUMBER OF CONTROLLERS REQUIRED:

If quantity differs from Acorn factory quote, additional controllers are at additional cost.

WATER METERING SHOWER-WARE SHOWERS

BASE MODEL NUMBERS (Must Specify)

- 100/400-EVS1 Acme & Apex Shower Master-Trol, Single Temperature
Valve: Remote Within Unit
Controller Must Be Remote.
- 600/700-EVS1 Classic & Capital Column Shower Master-Trol, Single Temperature
Valve: Remote Above Unit
Controller Must Be Remote.

Product Options

Note: Use chart on Master-Trol Basic Systems Overview catalog page for controller preprogramming and options specifications.

WATER METERING COMBIES, LAVATORIES, DRINKING FOUNTAINS, & SECURITY SHOWERS

BASE MODEL NUMBERS (Must Specify)

- EVS1 Master-Trol, Single Temperature (Drinking Fountains)
- EVS2 Master-Trol, Hot & Cold

Product Options

- MA Manifolder Valve:
 - 2 (Max. Showers) 3 4

Note: Use chart on Master-Trol Basic Systems Overview catalog page for controller preprogramming and options specifications

FLUSH VALVE LOCKOUT COMBIES, TOILETS & URINALS

BASE MODEL NUMBERS (Must Specify)

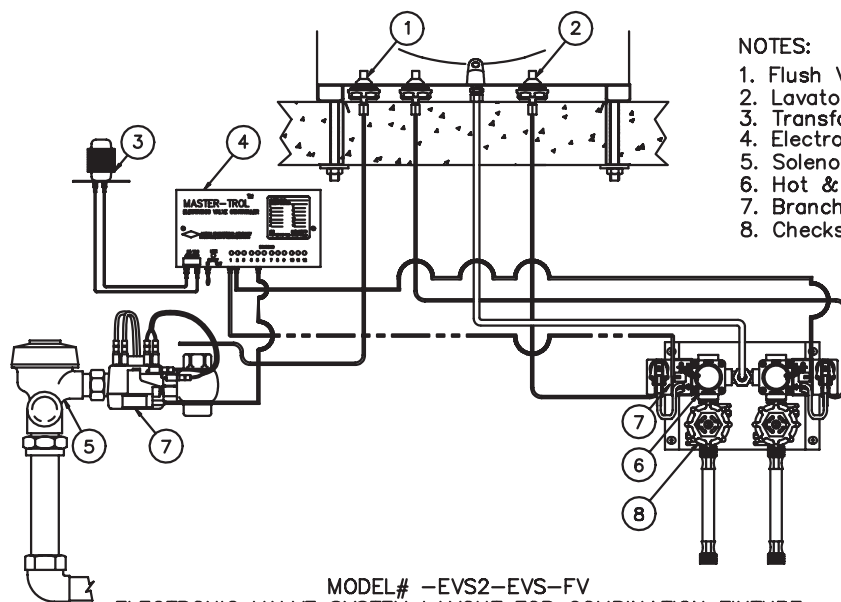
- EVS-FV Master-Trol Electronic Flush Valve
Flush Valve Requirements (Must Specify):
 - 1.0 GPF- Washout Urinals Only
 - 1.5 GPF- Washout Urinals Only
 - 1.6 GPF- Toilets Only
 - 3.5 GPF- Toilets & Blowout Urinals

Product Options

- EVS-FTE Flood-Trol Anti-Flood System (Electronic) - Toilets Only

Note: Use chart on Master-Trol Basic Systems Overview catalog page for controller preprogramming and options specifications.

Please visit www.acorneng.com for most current specifications.



NOTES:

1. Flush Valve Pneumatic Pushbutton –EVS–FV.
2. Lavatory Pneumatic Pushbutton –EVS2.
3. Transformer Provided Standard.
4. Electronic Valve Controller –EVS2, –EVS–FV.
5. Solenoid Flush Valve –EVS–FV.
6. Hot & Cold Solenoid Valve –EVS2.
7. Branch Box/Pneumatic Switch.
8. Checkstop and Strainer Assembly.

MODEL# –EVS2–EVS–FV
ELECTRONIC VALVE SYSTEM LAYOUT FOR COMBINATION FIXTURE

<p>Important: Installation instructions and current rough-in are furnished with each fixture. Do not rough in without certified dimensions. Dimensions are subject to manufacturer's tolerance of plus or minus 1/4" and change without notice. Acorn assumes no responsibility for use of void or superseded data. © Copyright 2004 Acorn Engineering Company</p>	
<p style="text-align: center;">Selection Summary</p> <p>Model No. & Option _____</p> <p>Quantity _____</p>	<p style="text-align: center;">Approved for Manufacturing</p> <p>Company _____ Title _____</p> <p>Signature _____ Date _____</p>