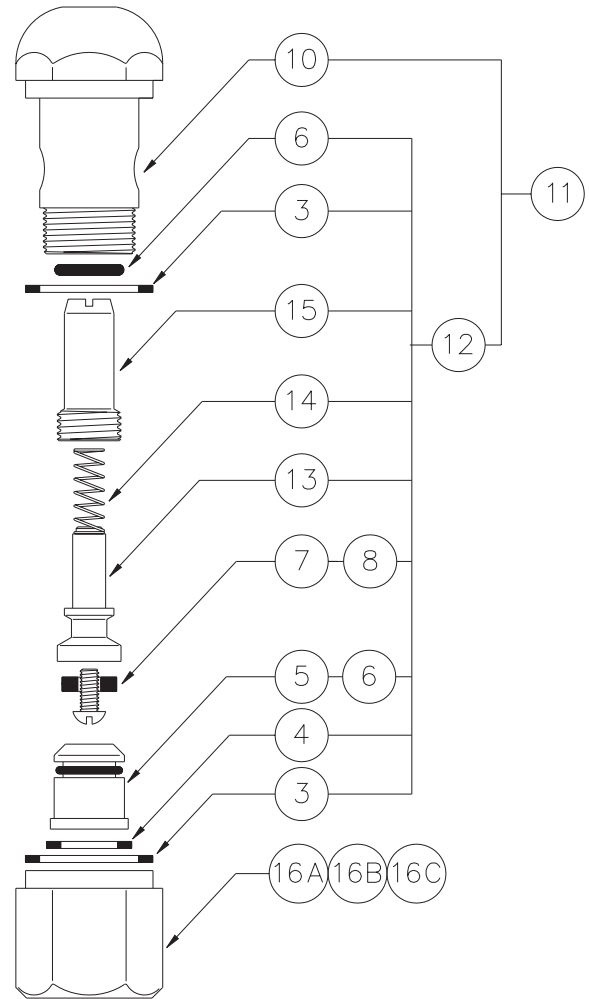


STOP ASSEMBLY



CHECKSTOP ASSEMBLY

1	2767-010-002	STOP ASSY-LESS BONNET NUT	10	2765-001-199	UNION STOP BODY
2	2767-010-001	STOP CARTRIDGE ASSY	11	2767-020-002	CK STOP ASSY-W/O BONNET NUT
3	0431-018-000	UNION GASKET	12	2767-020-001	CHECK STOP CARTRIDGE ASSY
4	0431-013-000	GASKET	13	2768-000-199	PLUNGER
5	2769-000-199	SEAT	14	2415-002-000	SPRING
6	0401-111-000	"O"-RING	15	2767-000-199	CHECK STOP STEM
7	0106-001-000	#8-32 x 3/8" LG. RD. HD.	16A	2766-000-199	BONNET NUT 1/2"-NCT
8	0431-009-000	DISC	16B	2766-001-199	BONNET NUT 1/2"-NPT
9	2767-001-199	STOP STEM	16C	2766-002-199	BONNET NUT 3/8"-NCT
ITEM	PART NUMBER	DESCRIPTION	ITEM	PART NUMBER	DESCRIPTION



ACORN ENGINEERING COMPANY
 P.O. BOX 3527 INDUSTRY, CA. 91744
 (626) 336-4561 FAX (626) 961-2200

TITLE REVERSIBLE UNION INLETS - PENAL-TROL VALVES

MANUFACTURE DATE
JANUARY 1971 TO
AUGUST 1976

DATE ISSUED
9-1-89
 DATE REVISED
12-1-89

DRAWING NUMBER
9956-000-001