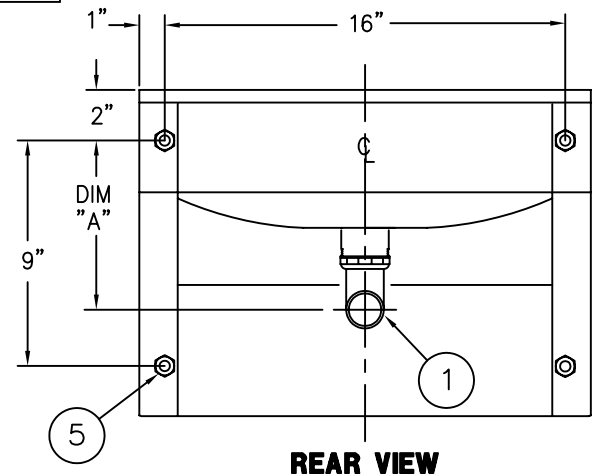
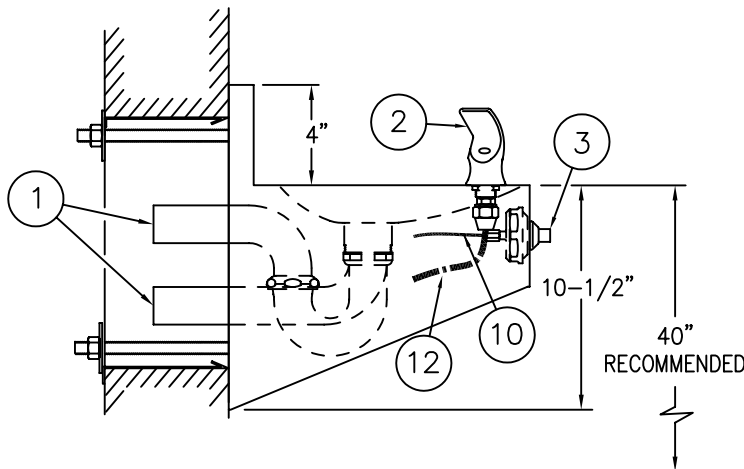
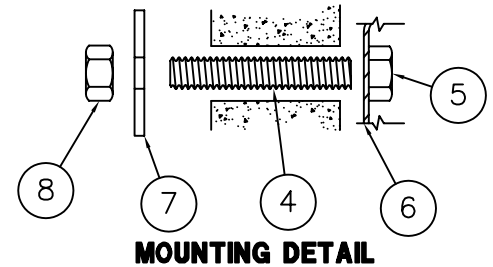


REFERENCE DRAWINGS	
-3 VALVE BODY (SINGLE TEMP)	9955-006-003
FOUNTAIN FIXTURE TRIM	9957-026-001
NON-METERING SERVOMOTOR	9955-001-002
STOP	9956-040-003
HARDWARE PACKAGE	9957-900-001
-SW SLEEVE / -MT TEMPLATE	9925-220-001
OPTIONAL VALVES:	
-MVC1 S/T TIME-TROL	9905-201-003
-EVS1 S/T MASTER-TROL	9905-311-003

WARNING:

WATER FLOW PRESSURE 25/100 PSI MIN/MAX. RECOMMENDED OUTLET TEMPERATURE 105°F MAX. FLUSH ALL SUPPLY LINES THOROUGHLY BEFORE CONNECTING. DRAIN VALVE PRIOR TO FREEZING TEMPERATURES.

WASTE OUTLET	DIM "A"
STANDARD	6-5/8"
-PT OPTION	3-1/8"



INSTALLATION INSTRUCTIONS:

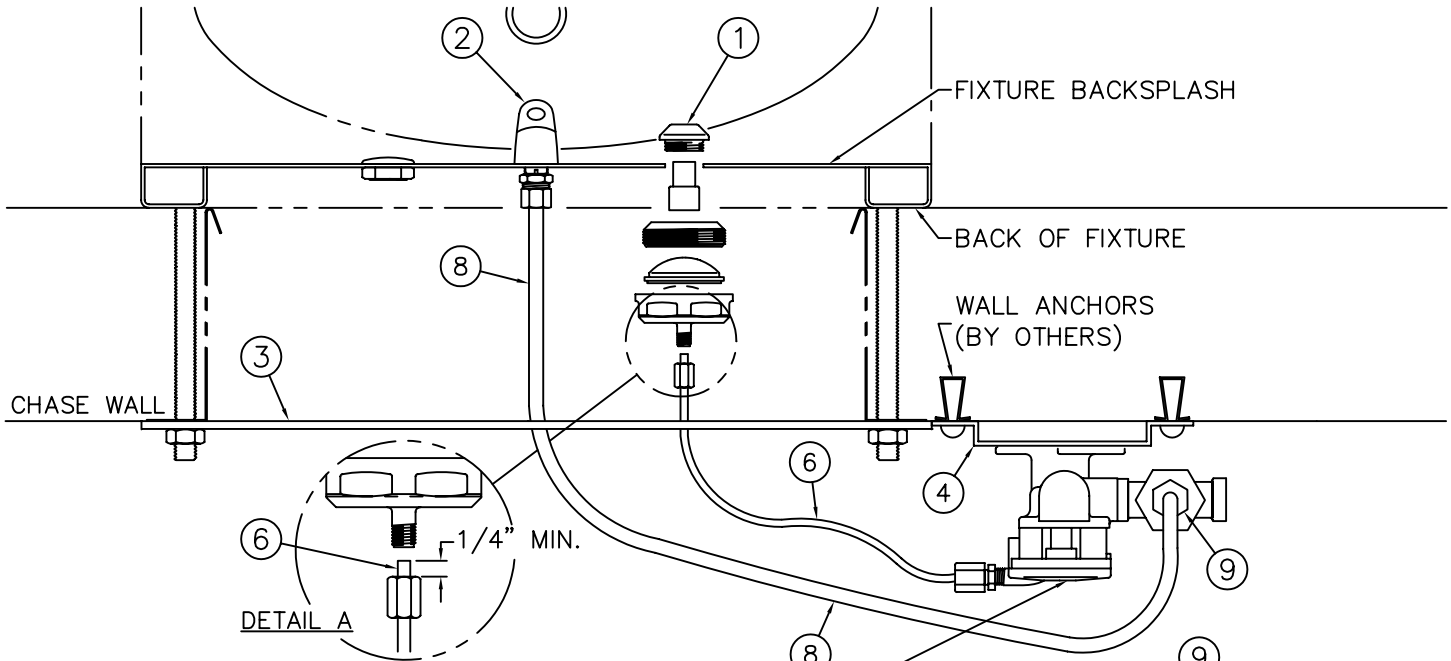
- A-ROUGH-IN FOR FIXTURE WASTE OUTLET ①:
· 1-1/2" O.D. PLAIN END PROVIDED STANDARD & FOR -PT.
- B-PRIOR TO INSTALLATION OF FIXTURE, MOUNT BUBBLER ② AND PUSHBUTTON ③.
- C-THREAD 1/2"-13 UNC STUDS ④ INTO MOUNTING POINTS ⑤ AT REAR OF FIXTURE. STUDS ④ MUST HAVE A MINIMUM 1/2" ENGAGEMENT.
- D-PLACE FOUNTAIN ⑥ UP AGAINST THE WALL, SLIDING STUDS ④ THROUGH SLEEVE OR WALL OPENINGS.
- E-PLACE WASHERS ⑦ AND NUTS ⑧ ONTO STUDS ④. TIGHTEN TO 60 FT/LBS.
- F-MAKE-UP FOUNTAIN WASTE CONNECTION - 1-1/2" O.D. PLAIN END (SUITABLE FOR A COMPRESSION CONNECTION).

- G-MOUNT THE AIR-CONTROL VALVE ASSY. ⑨. LOCATE AS REQ'D. MAX. ALLOWABLE DISTANCE BETWEEN PUSHBUTTON AND AIR-CONTROL SERVOMOTOR IS 10 FEET. WALL FASTENERS BY OTHERS.
- H-CONNECT 1/8" O.D. POLYETHYLENE AIR LINE ⑩ TO PUSHBUTTON ③ AND SERVOMOTOR ⑪ HAND TIGHT USING FERRULE NUTS PROVIDED. SEE DETAIL A.
- I-CONNECT 1/4" O.D. POLYETHYLENE WATER LINE ⑫ TO BUBBLER ② AND COMPRESSION NUT ⑬ HAND TIGHT USING FERRULE NUTS PROVIDED.
- J-AFTER THOROUGHLY FLUSHING THE SUPPLY LINES, MAKE-UP SUPPLY CONNECTIONS (1/2" NPS FEMALE). (NOTE: SUPPLY INLET CONNECTION WILL ACCOMMODATE 1/2" NPT MALE ADAPTER). THREAD FLEX CONNECTOR HOSE ⑭ TO VALVE ⑪ INLET & TO SUPPLY STUB-OUTS.



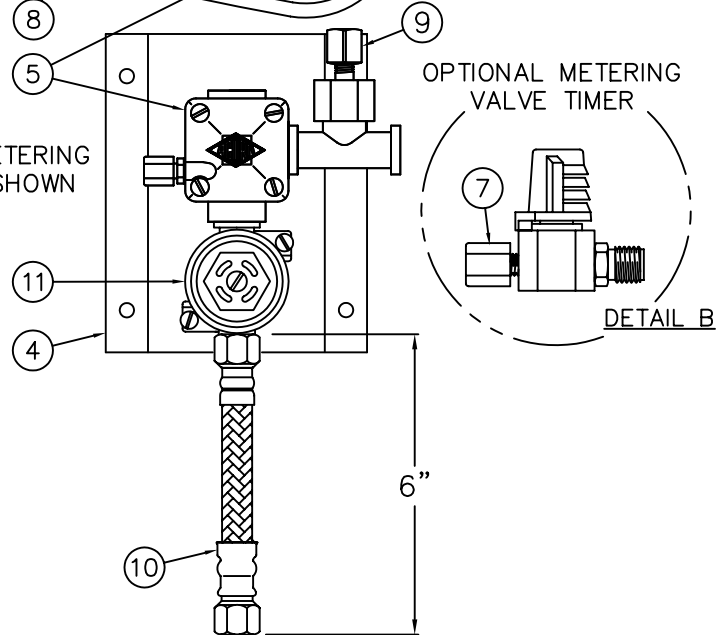
ACORN ENGINEERING COMPANY
P.O. BOX 3527 INDUSTRY, CA. 91744
(626) 336-4561 FAX (626) 961-2200

TITLE DRINKING FOUNTAIN WITH AIR-CONTROL VALVE - CAT. #1670-3		
MANUFACTURE DATE APRIL 30, 1998 TO PRESENT	DATE ISSUED 3/30/98	DRAWING NUMBER 9925-170-002
	DATE REVISED 10/20/04	



REFERENCE DRAWINGS	
ASSEMBLIES	NUMBER
VALVE BODY	9955-006-003
CHECKSTOP	9956-040-003
FIXTURE TRIM	9957-051-001
AIR-CONTROL SERVOMOTORS	
METERING	9955-000-002
NON-METERING	9955-001-002

NOTE: NON-METERING VALVE SHOWN



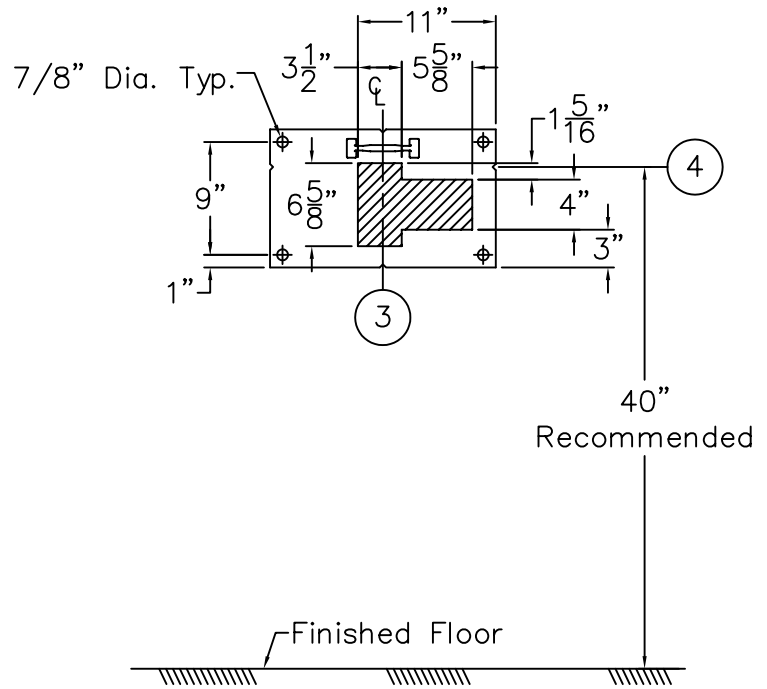
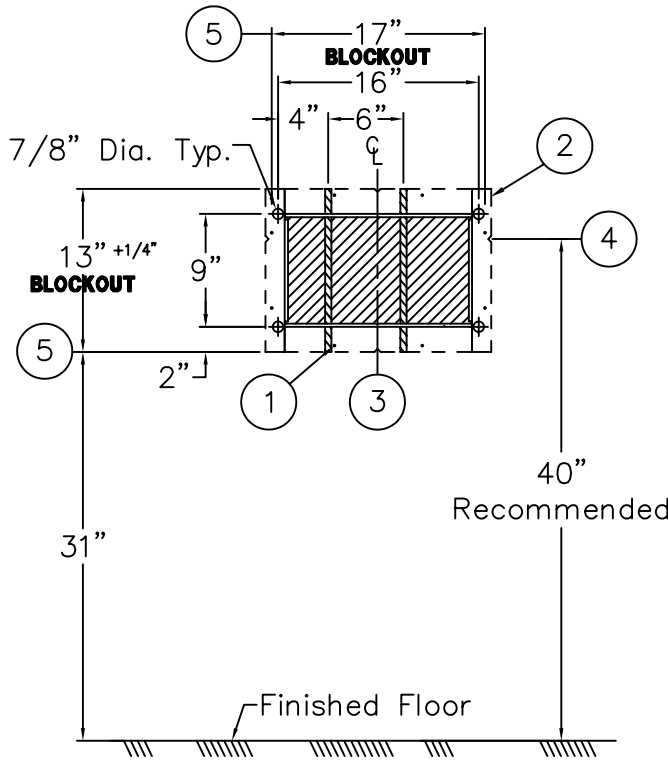
INSTALLATION INSTRUCTIONS:

- A- PRIOR TO INSTALLATION OF THE FIXTURE, MOUNT PUSHBUTTON ① AND BUBBLER ② TO THE BACKSPASH.
- B- INSTALL THE PLUMBING FIXTURE TO THE WALL INCLUDING UPPER SUPPORT PLATE ③.
- C- LOCATE AS REQUIRED AND MOUNT THE AIR-CONTROL VALVE ASSEMBLY ④. MAXIMUM ALLOWABLE DISTANCE BETWEEN PUSHBUTTON ① AND AIR-CONTROL SERVOMOTOR ⑤ IS 10 FEET. WALL ANCHORING HARDWARE ARE BY OTHERS.
- D- CONNECT 1/8" O.D. POLYETHYLENE AIR LINE ⑥ TO PUSHBUTTON ① AND SERVOMOTOR ⑤. HAND TIGHTEN USING FERRULE NUT PROVIDED. SEE DETAIL A. NOTE: WHEN METERING VALVE IS SPECIFIED, AIR LINE CONNECTS DIRECTLY TO VALVE TIMER ⑦. SEE DETAIL B.
- E- CONNECT 1/4" O.D. POLYETHYLENE WATER LINE ⑧ TO BUBBLER ② AND COMPRESSION NUT ⑨. HAND TIGHTEN USING FERRULE NUT PROVIDED.

- F- AFTER THOROUGHLY FLUSHING THE SUPPLY LINE, MAKE-UP 1/2" NPS FEMALE SUPPLY CONNECTION. NOTE: SUPPLY INLET CONNECTION WILL ACCOMODATE 1/2" NPT MALE ADAPTER. THREAD FLEX CONNECTOR HOSE ⑩ TO CHECKSTOP ⑪ AND SUPPLY STUB OUT.
- G- SEE APPROPRIATE SERVOMOTOR REFERENCE DRAWING FOR DETAILS AND TIMING INSTRUCTIONS.

NOTE:
 MAXIMUM RECOMMENDED WORKING WATER PRESSURE IS 100 PSI; TEMPERATURE IS 130° F; OUTLET TEMPERATURE IS RECOMMENDED AT A MAXIMUM OF 105° F.
 WARNING:
 PRIOR TO MAKING INSTALLATION, SUPPLY LINES MUST BE FLUSHED OF ALL FOREIGN MATERIAL SUCH AS PIPE DOPE, CHIPS, SOLDER, ETC. VALVE MUST BE DRAINED PRIOR TO BEING SUBJECTED TO FREEZING TEMPERATURES. MAXIMUM RECOMMENDED OUTLET WATER TEMPERATURE IS 105° F.

ACORN ENGINEERING COMPANY P.O. BOX 3527 INDUSTRY, CA. 91744 (626) 336-4561 FAX (626) 961-2200	TITLE (-03 SERIES) SINGLE TEMP AIR-CONTROL VALVE ASSEMBLY -NEW STYLE		
	MANUFACTURE DATE SEPTEMBER 1995 TO PRESENT	DATE ISSUED 11/01/95	DRAWING NUMBER 9905-001-003
		DATE REVISED 01/05/05	



WALL SLEEVE (-SW)

BOTH VIEWS ARE FROM CELL SIDE

METAL TEMPLATE (-MT)

SHADED AREAS ARE REQUIRED WALL OPENINGS

INSTALLATION INSTRUCTIONS

WALL SLEEVE (-SW)

SLEEVES ARE INSTALLED IN FORMS (USING NAIL HOLES ① PROVIDED) OR GROUTED INTO BLOCK WALLS, BECOMING A PERMANENT PART OF WALL.

- A. INSTALL SLEEVE WITH FLANGE ② ON CHASE SIDE OF WALL.
- B. LOCATE TOP AND BOTTOM NOTCHES AT VERTICAL CENTERLINE ③ OF PLUMBING FIXTURE.
- C. LOCATE SIDE NOTCHES ④ AT DIMENSION SHOWN, MEASURED FROM THE FINISHED FLOOR ON CELL (FIXTURE) SIDE.

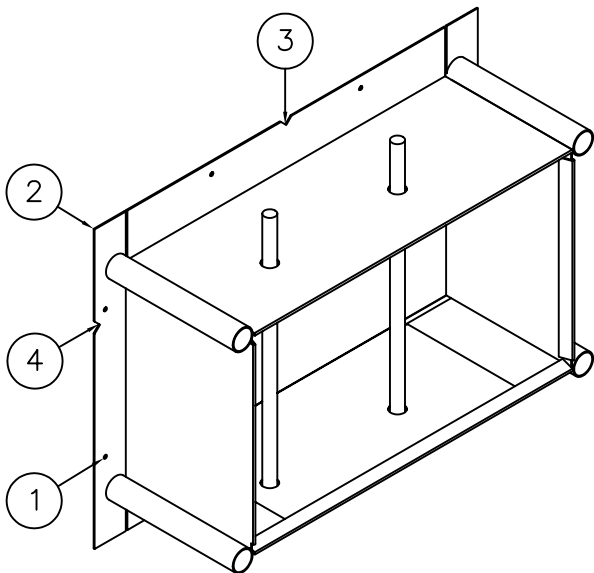
NOTES:

- 1. FOR POURED WALL CONSTRUCTION, TEMPORARY BRACING SHOULD BE INSTALLED WITHIN SLEEVE OPENING TO PREVENT DEFORMATION TO SLEEVE WHICH MAY OCCUR DURING POUR. DO NOT POUR CONCRETE DIRECTLY ON TOP OF WALL SLEEVE.
- 2. WHEN SLEEVES ARE NOT AVAILABLE BLOCKOUT FOR SLEEVE OPENING IN WALL PER DIMENSIONS SHOWN ⑤.

METAL TEMPLATE (-MT)

TEMPLATES ARE USED TO LAYOUT REQUIRED WALL OPENINGS FOR SUBSEQUENT FLAME CUTTING OR CORE DRILLING.

- A. STRIKE A HORIZONTAL CHALKLINE ④ ON THE WALL AT DIMENSION SHOWN, MEASURED FROM THE FINISHED FLOOR ON CELL (FIXTURE) SIDE. THIS WILL LOCATE CENTERLINE FOR HORIZONTAL NOTCHES ON TEMPLATE.
- B. STRIKE A VERTICAL CHALKLINE ③ ON THE WALL TO INDICATE CENTERLINE OF FIXTURE. THIS WILL LOCATE CENTERLINE FOR VERTICAL NOTCHES ON TEMPLATE.
- C. PLACE TEMPLATE AGAINST WALL. LOCATE NOTCHES ALONG CHALKLINES. MARK WALL FOR REQUIRED OPENING.

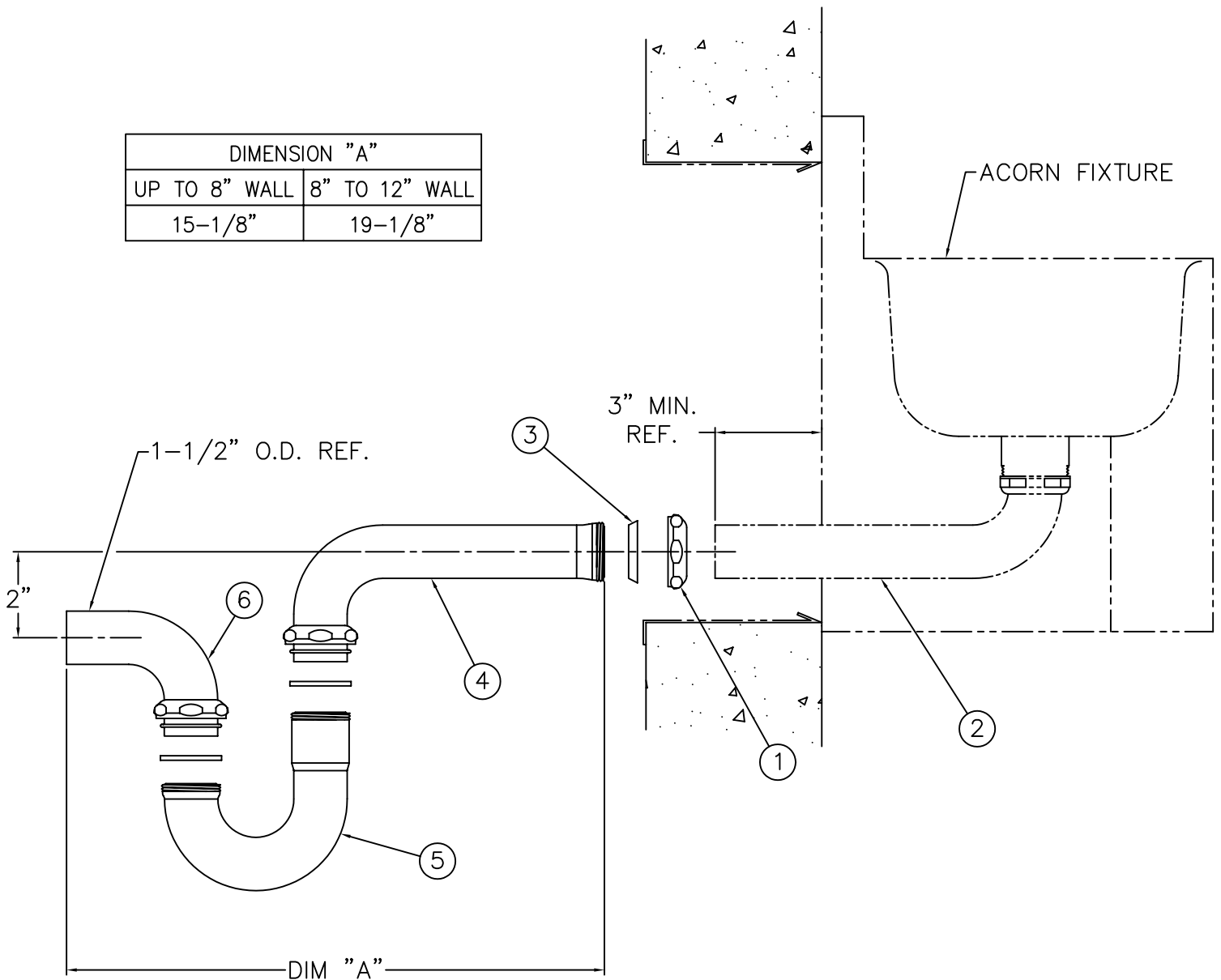


WALL SLEEVE (-SW)

ACORN ENGINEERING COMPANY P.O. BOX 3527 INDUSTRY, CA. 91744 (626) 336-4561 FAX (626) 961-2200	TITLE -SW WALL SLEEVE & -MT METAL TEMPLATE - CAT. #1670 FOUNTAIN		
	MANUFACTURE DATE JUNE 1971 TO PRESENT	DATE ISSUED 3/1/90	DRAWING NUMBER 9925-220-001
	DATE REVISED 12/07/05		



DIMENSION "A"	
UP TO 8" WALL	8" TO 12" WALL
15-1/8"	19-1/8"



INSTALLATION INSTRUCTIONS:

A- AFTER INSTALLING ACORN UNIT ON FINISHED WALL, SLIP COMPRESSION NUT ① OVER 1-1/2" O.D. PLAIN END WASTE ②. USING COMPRESSION GASKET ③, AND NUT ① MAKE-UP COMPRESSION CONNECTION WITH SLIP JOINT ELBOW ④.

B- REMOVABLE TUBULAR P-TRAP ⑤ CONNECTS TO SLIP JOINT ELBOW ④ AND PLAIN END ELBOW ⑥ WITH COMPRESSION CONNECTIONS AS SHOWN.

NOTE: TUBULAR P-TRAP IS REMOVABLE IN ORDER TO ALLOW FOR WASTE CLEANOUT.

ACORN ENGINEERING COMPANY
 P.O. BOX 3527 INDUSTRY, CA. 91744
 (626) 336-4561 FAX (626) 961-2200

TITLE LAVATORY THRU-WALL WASTE CONNECTION w/ P-TRAP & CLEANOUT CAT. # -LW1		
MANUFACTURE DATE APRIL 30, 1998 TO PRESENT	DATE ISSUED 3/19/98	DRAWING NUMBER 9925-065-002
	DATE REVISED 4/23/98	