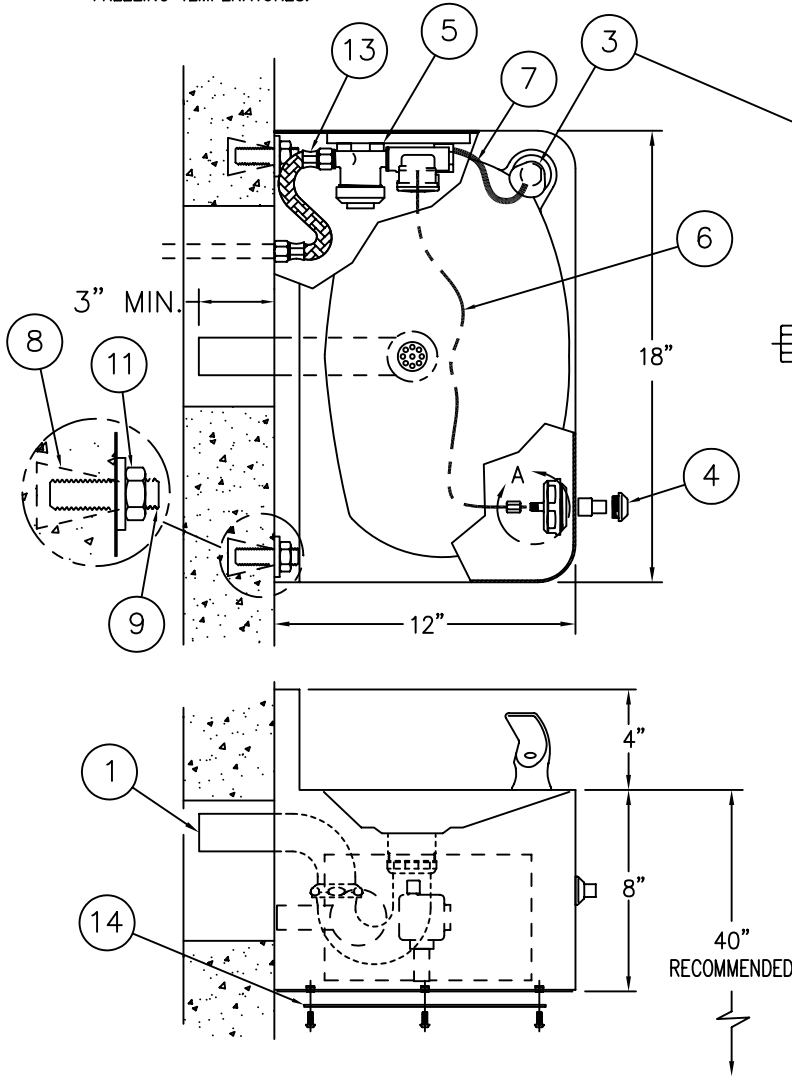


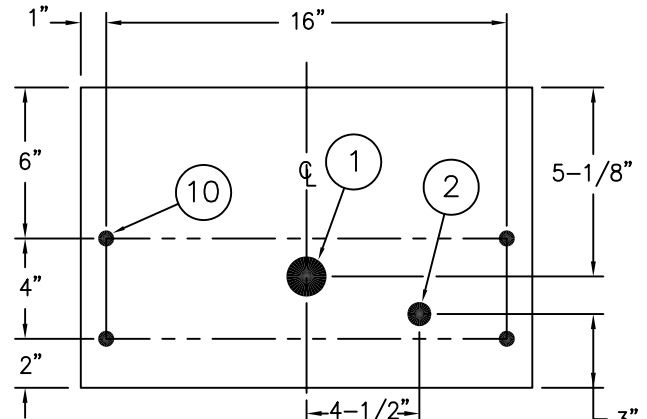
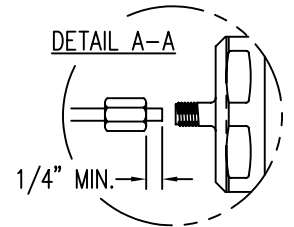
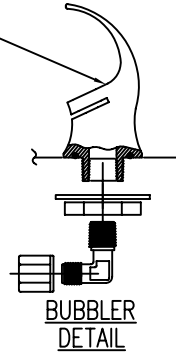


**WARNING:**

WATER FLOW PRESSURE 25/100 PSI MIN/MAX. RECOMMENDED OUTLET TEMPERATURE 105°F MAX. FLUSH ALL SUPPLY LINES THOROUGHLY BEFORE CONNECTING. DRAIN VALVE PRIOR TO FREEZING TEMPERATURES.



| REFERENCE DRAWINGS          |              |
|-----------------------------|--------------|
| -3 VALVE BODY (SINGLE TEMP) | 9955-006-003 |
| FOUNTAIN FIXTURE TRIM       | 9957-026-001 |
| NON-METERING SERVOMOTOR     | 9955-001-002 |
| STOP                        | 9956-040-003 |
| HARDWARE PACKAGE            | 9957-900-001 |
| -SW WALL SLEEVE             | 9925-222-001 |
| OPTIONAL VALVES:            |              |
| -MVC1 S/T TIME-TROL         | 9905-201-003 |
| -EVS1 S/T MASTER-TROL       | 9905-311-003 |



**ROUGH-IN VIEW FROM FIXTURE SIDE**

**INSTALLATION INSTRUCTIONS:**

- A-ROUGH-IN FOR FIXTURE WASTE OUTLET (1):  
· 1-1/2" O.D. PLAIN END REMOVABLE P-TRAP PROVIDED STANDARD.
- B-ROUGH-IN WATER SUPPLY STUB-OUT (2) 1/2" NPT.
- C-PRIOR TO FIXTURE INSTALLATION, REMOVE THE ACCESS PANEL (14), MOUNT BUBBLER (3) AND PUSHBUTTON (4), AS INDICATED.
- D-CONNECT 1/8" O.D. POLYETHYLENE AIR LINE (6) TO PUSHBUTTON (4) AND VALVE (5) SERVOMOTOR HAND TIGHT USING FERRULE NUTS PROVIDED. SEE DETAIL A-A.
- E-CONNECT 1/4" O.D. POLYETHYLENE WATER LINE (7) TO BUBBLER (3) AND VALVE (5) COMPRESSION NUT HAND TIGHT USING FERRULE NUTS PROVIDED.

- F-INSTALL 1/2" WALL ANCHORS (8) BY OTHERS. SECURE (4) 1/2"-13 UNC STUDS (9) INTO WALL ANCHORS. [FOR UNITS WITH OPTIONAL -SW WALL SLEEVES, SECURE WITH 1/2"-13 UNC STUDS TO SLEEVE ANCHOR TAPPINGS.]
- G-PLACE FIXTURE AGAINST WALL WITH MOUNTING HOLES (10) OVER 1/2" STUDS (9). THROUGH THE ACCESS OPENING, SECURE FIXTURE WITH NUTS AND WASHERS (11).
- H-MAKE-UP FOUNTAIN WASTE CONNECTION - 1-1/2" O.D. PLAIN END (SUITABLE FOR A COMPRESSION CONNECTION).
- I- AFTER THOROUGHLY FLUSHING THE SUPPLY LINE, THREAD FLEX CONNECTOR HOSE (13) (1/2" NPS FEMALE) TO VALVE (5) INLET AND TO SUPPLY STUB-OUT (2). (NOTE: SUPPLY INLET CONNECTION WILL ACCOMMODATE 1/2" NPT MALE ADAPTER.)
- J- REINSTALL ACCESS PANEL (14).



ACORN ENGINEERING COMPANY  
P.O. BOX 3527 INDUSTRY, CA. 91744  
(626) 336-4561 FAX (626) 961-2200

TITLE

**DRINKING FOUNTAIN - FRONT ACCESS CAT. #1670-FA**

MANUFACTURE DATE

**APRIL 30, 1998  
TO PRESENT**

DATE ISSUED

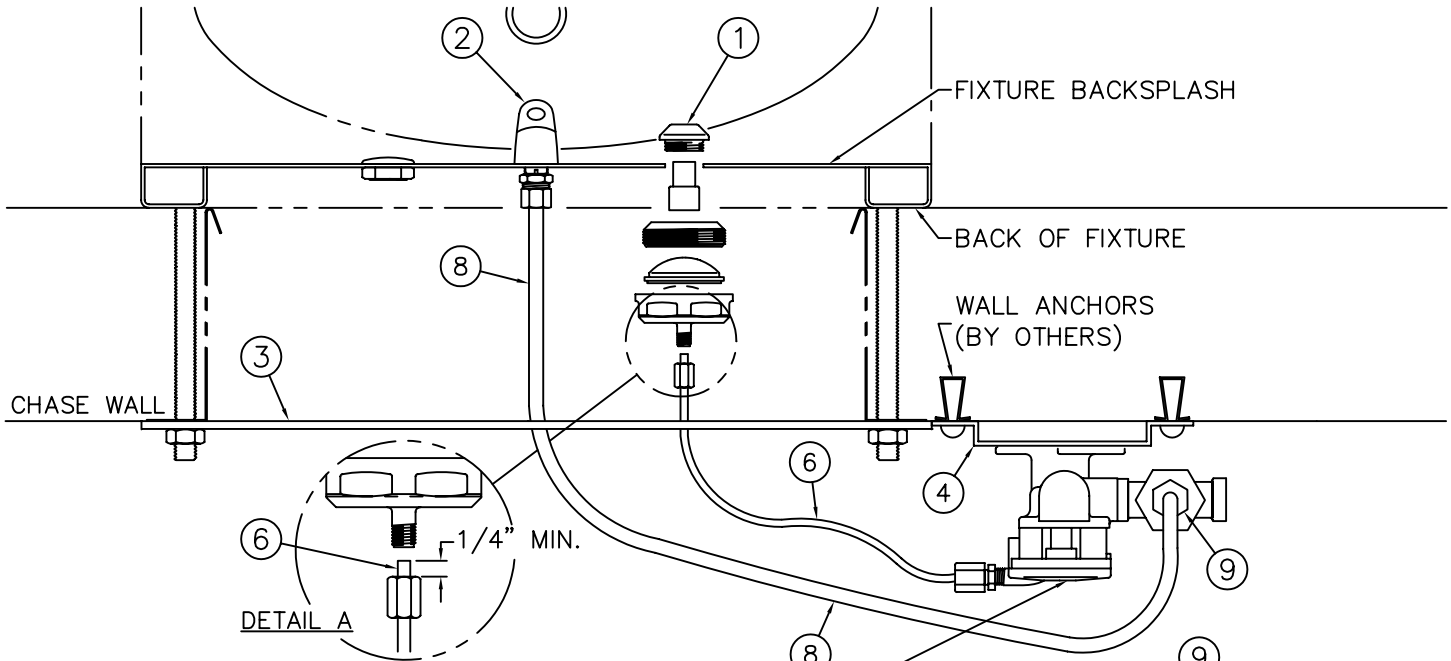
**3/30/98**

DATE REVISED

**10/20/04**

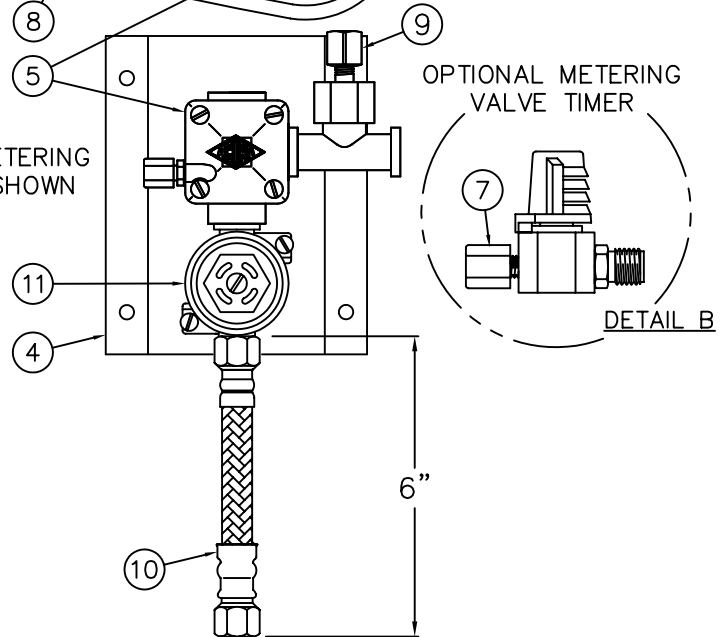
DRAWING NUMBER

**9925-171-002**



| REFERENCE DRAWINGS      |              |
|-------------------------|--------------|
| ASSEMBLIES              | NUMBER       |
| VALVE BODY              | 9955-006-003 |
| CHECKSTOP               | 9956-040-003 |
| FIXTURE TRIM            | 9957-051-001 |
| AIR-CONTROL SERVOMOTERS |              |
| METERING                | 9955-000-002 |
| NON-METERING            | 9955-001-002 |

NOTE: NON-METERING VALVE SHOWN



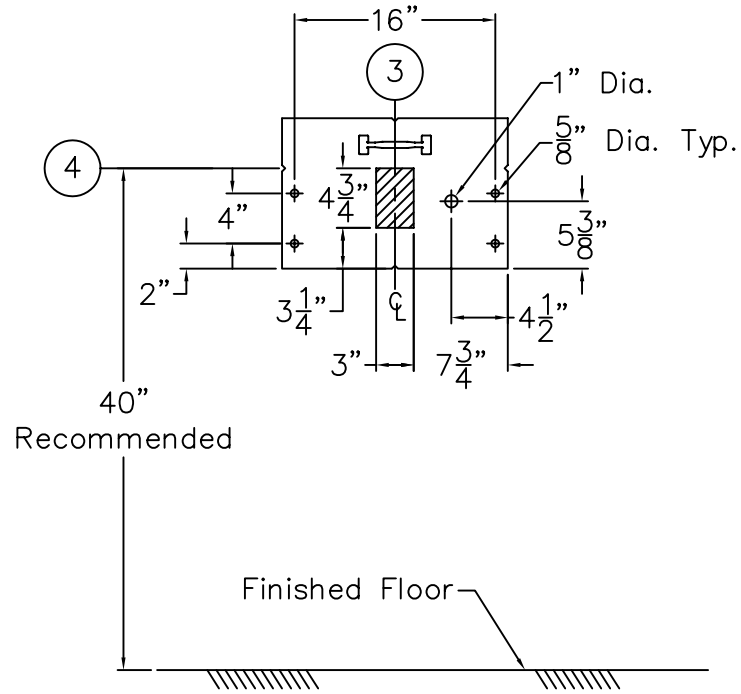
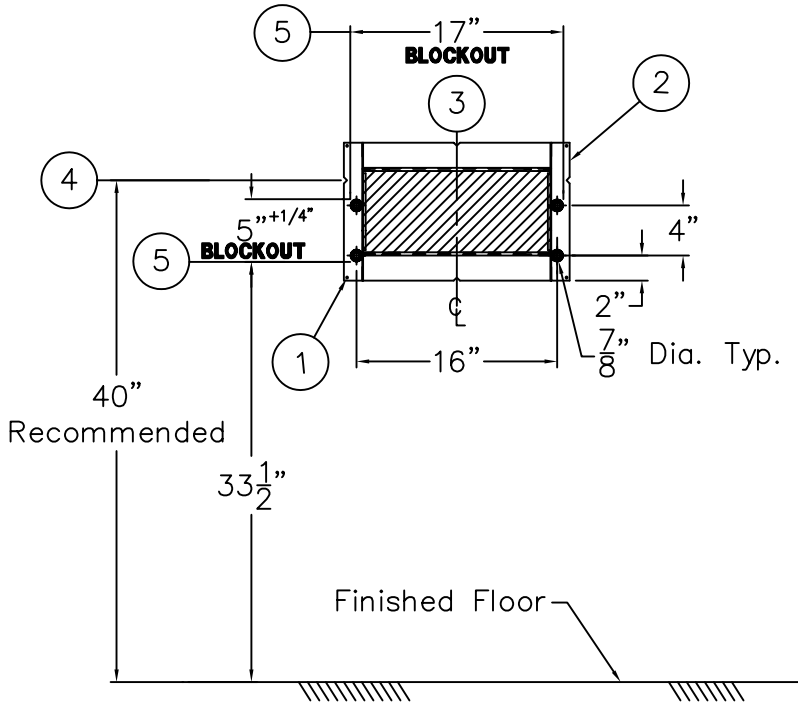
**INSTALLATION INSTRUCTIONS:**

- A- PRIOR TO INSTALLATION OF THE FIXTURE, MOUNT PUSHBUTTON ① AND BUBBLER ② TO THE BACKSPLASH.
- B- INSTALL THE PLUMBING FIXTURE TO THE WALL INCLUDING UPPER SUPPORT PLATE ③.
- C- LOCATE AS REQUIRED AND MOUNT THE AIR-CONTROL VALVE ASSEMBLY ④. MAXIMUM ALLOWABLE DISTANCE BETWEEN PUSHBUTTON ① AND AIR-CONTROL SERVOMOTOR ⑤ IS 10 FEET. WALL ANCHORING HARDWARE ARE BY OTHERS.
- D- CONNECT 1/8" O.D. POLYETHYLENE AIR LINE ⑥ TO PUSHBUTTON ① AND SERVOMOTOR ⑤. HAND TIGHTEN USING FERRULE NUT PROVIDED. SEE DETAIL A. NOTE: WHEN METERING VALVE IS SPECIFIED, AIR LINE CONNECTS DIRECTLY TO VALVE TIMER ⑦. SEE DETAIL B.
- E- CONNECT 1/4" O.D. POLYETHYLENE WATER LINE ⑧ TO BUBBLER ② AND COMPRESSION NUT ⑨. HAND TIGHTEN USING FERRULE NUT PROVIDED.

- F- AFTER THOROUGHLY FLUSHING THE SUPPLY LINE, MAKE-UP 1/2" NPS FEMALE SUPPLY CONNECTION. NOTE: SUPPLY INLET CONNECTION WILL ACCOMODATE 1/2" NPT MALE ADAPTER. THREAD FLEX CONNECTOR HOSE ⑩ TO CHECKSTOP ⑪ AND SUPPLY STUB OUT.
- G- SEE APPROPRIATE SERVOMOTOR REFERENCE DRAWING FOR DETAILS AND TIMING INSTRUCTIONS.

NOTE:  
 MAXIMUM RECOMMENDED WORKING WATER PRESSURE IS 100 PSI; TEMPERATURE IS 130° F; OUTLET TEMPERATURE IS RECOMMENDED AT A MAXIMUM OF 105° F.  
 WARNING:  
 PRIOR TO MAKING INSTALLATION, SUPPLY LINES MUST BE FLUSHED OF ALL FOREIGN MATERIAL SUCH AS PIPE DOPE, CHIPS, SOLDER, ETC. VALVE MUST BE DRAINED PRIOR TO BEING SUBJECTED TO FREEZING TEMPERATURES. MAXIMUM RECOMMENDED OUTLET WATER TEMPERATURE IS 105° F.

|   |   |                                 |                                       |
|---|---|---------------------------------|---------------------------------------|
| ACORN ENGINEERING COMPANY<br>P.O. BOX 3527 INDUSTRY, CA. 91744<br>(626) 336-4561 FAX (626) 961-2200 | TITLE <b>(-03 SERIES) SINGLE TEMP AIR-CONTROL VALVE ASSEMBLY -NEW STYLE</b> |                                 |                                       |
|   | MANUFACTURE DATE<br><b>SEPTEMBER 1995<br/>                 TO PRESENT</b>   | DATE ISSUED<br><b>11/01/95</b>  | DRAWING NUMBER<br><b>9905-001-003</b> |
|   |   | DATE REVISED<br><b>01/05/05</b> |                                       |



**WALL SLEEVE (-SW)**

**BOTH VIEWS ARE FROM CELL SIDE**

**METAL TEMPLATE (-MT)**

SHADED AREAS ARE REQUIRED WALL OPENINGS

**INSTALLATION INSTRUCTIONS**

**WALL SLEEVE (-SW)**

SLEEVES ARE INSTALLED IN FORMS (USING NAIL HOLES ① PROVIDED) OR GROUTED INTO BLOCK WALLS, BECOMING A PERMANENT PART OF WALL.

- A. INSTALL SLEEVE WITH FLANGE ② ON CHASE SIDE OF WALL.
- B. LOCATE TOP AND BOTTOM NOTCHES AT VERTICAL CENTERLINE ③ OF PLUMBING FIXTURE.
- C. LOCATE SIDE NOTCHES ④ AT DIMENSION SHOWN, MEASURED FROM THE FINISHED FLOOR ON CELL (FIXTURE) SIDE.

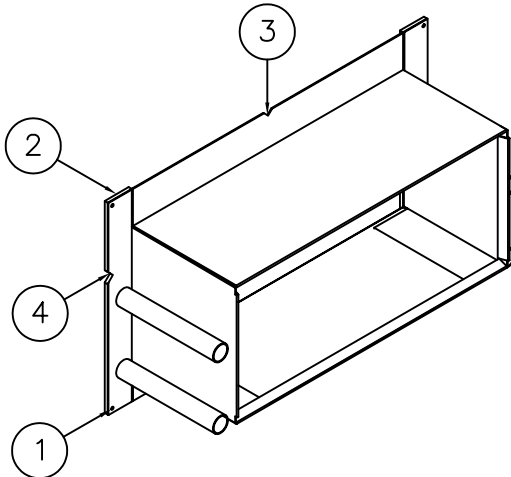
**NOTES:**

- 1. FOR POURED WALL CONSTRUCTION, TEMPORARY BRACING SHOULD BE INSTALLED WITHIN SLEEVE OPENING TO PREVENT DEFORMATION TO SLEEVE WHICH MAY OCCUR DURING POUR. DO NOT POUR CONCRETE DIRECTLY ON TOP OF WALL SLEEVE.
- 2. WHEN SLEEVES ARE NOT AVAILABLE BLOCKOUT FOR SLEEVE OPENING IN WALL PER DIMENSIONS SHOWN ⑤.

**METAL TEMPLATE (-MT)**

TEMPLATES ARE USED TO LAYOUT REQUIRED WALL OPENINGS FOR SUBSEQUENT FLAME CUTTING OR CORE DRILLING.

- A. STRIKE A HORIZONTAL CHALKLINE ④ ON THE WALL AT DIMENSION SHOWN, MEASURED FROM THE FINISHED FLOOR ON CELL (FIXTURE) SIDE. THIS WILL LOCATE CENTERLINE FOR HORIZONTAL NOTCHES ON TEMPLATE.
- B. STRIKE A VERTICAL CHALKLINE ③ ON THE WALL TO INDICATE CENTERLINE OF FIXTURE. THIS WILL LOCATE CENTERLINE FOR VERTICAL NOTCHES ON TEMPLATE.
- C. PLACE TEMPLATE AGAINST WALL. LOCATE NOTCHES ALONG CHALKLINES. MARK WALL FOR REQUIRED OPENING.



**WALL SLEEVE (-SW)**



ACORN ENGINEERING COMPANY  
P.O. BOX 3527 INDUSTRY, CA. 91744  
(626) 336-4561 FAX (626) 961-2200

TITLE **-SW WALL SLEEVE & -MT METAL TEMPLATE - CAT. #1670-FA FOUNTAIN**

MANUFACTURE DATE  
**NOV 1977**  
**TO PRESENT**

DATE ISSUED  
**3/1/90**  
DATE REVISED  
**12/07/05**

DRAWING NUMBER  
**9925-222-001**