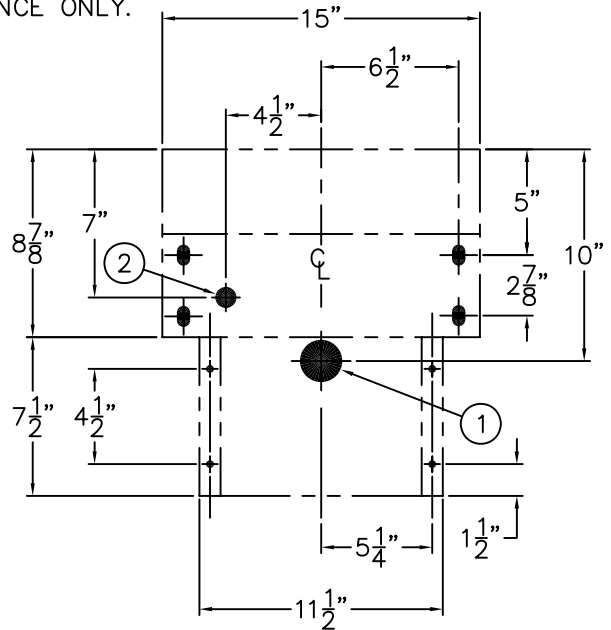


REFERENCE DRAWINGS	
-3 VALVE BODY (SINGLE TEMP)	9955-006-003
FIXTURE TRIM	9957-026-001
NON-METERING SERVOMOTOR	9955-001-002
STOP	9956-040-003
HARDWARE PACKAGE	9957-900-001

WARNING: WATER FLOW PRESSURE 25/100 PSI MIN/MAX
RECOMMENDED OUTLET TEMPERATURE 105° F MAX. FLUSH
ALL SUPPLY LINES THOROUGHLY BEFORE CONNECTING.
DRAIN VALVE PRIOR TO FREEZING TEMPERATURES.

**NOTE: REFER TO A.D.A. ACCESSIBILITY
GUIDELINES FOR COMPLETE
INSTALLATION REQUIREMENTS.**

OPTIONAL -BP PENAL
BUBBLER SHOWN FOR
REFERENCE ONLY.

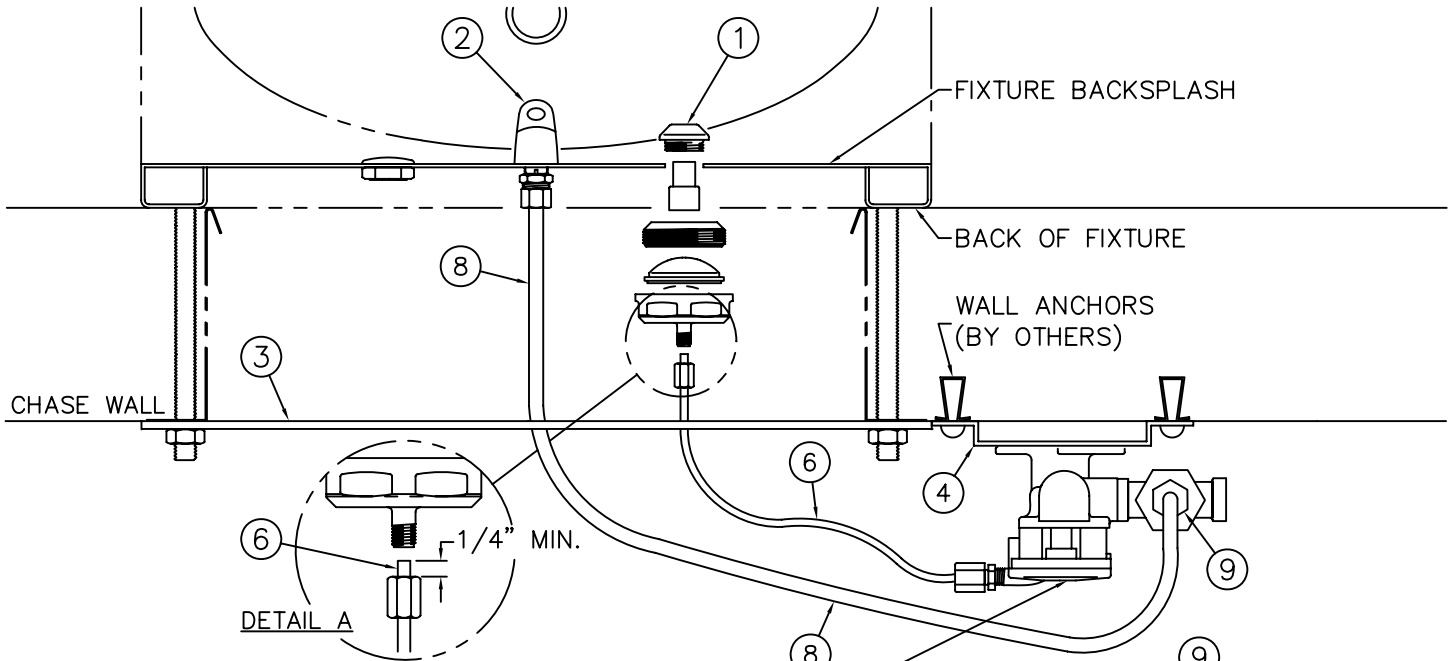


INSTALLATION INSTRUCTIONS:

- A- ROUGH-IN FOR PROVIDED WASTE OUTLET (1)
1-1/2" O.D. PLAIN END REMOVABLE P-TRAP.
- B- PROVIDE SUPPLY ROUGH FOR (2) 1/2" NPS
FLEX HOSE FEMALE END. NOTE: SUPPLY INLET
CONNECTION WILL ACCOMMODATE 1/2" NPT MALE
ADAPTER.
- C- PRIOR TO MOUNTING FIXTURE, REMOVE ACCESS
COVER (3) AND INSTALL BUBBLER (4) AND
PUSHBUTTON ASSEMBLY (5) SEE DETAIL A-A.
- D- CONNECT 1/8" O.D. POLYETHYLENE AIR-LINE (6)
TO PUSHBUTTON (5) AND TO VALVE SERVOMOTOR
(7) HAND-TIGHT USING FERRULE NUT PROVIDED.
- E- CONNECT 1/4" O.D. POLYETHYLENE WATER-LINE
(8) TO BUBBLER (5) AND VALVE COMPRESSION
NUT (9). TIGHTEN HAND-TIGHT USING FERRULE
NUT PROVIDED.

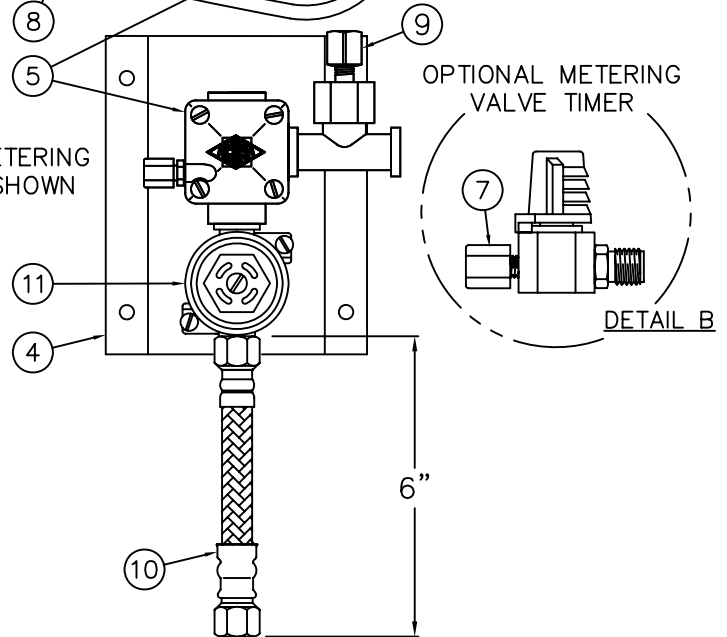
- F- LOCATE INSTALLER PROVIDED WALL ANCHORS (10)
AND SECURE FIXTURE WITH 1/2" x 13 UNC
MOUNTING HARDWARE PROVIDED (11). FOR UNIT
WITH OPTIONAL -SW WALL SLEEVE, SECURE TO
WALL SLEEVE ANCHOR TAPPINGS WITH HARDWARE
PROVIDED (11).
- G- MAKE UP WASTE CONNECTION TO 1-1/2" O.D.
PLAIN END (1) (SUITABLE FOR A COMPRESSION
CONNECTION).
- H- THOROUGHLY FLUSH SUPPLY LINE AND MAKE UP
CONNECTION TO 1/2" NPS FLEX HOSE (2) FEMALE
END CONNECTION.
- I- REINSTALL ACCESS COVER (3).

ACORN ENGINEERING COMPANY P.O. BOX 3527 INDUSTRY, CA. 91744 (626) 336-4561 FAX (626) 961-2200	TITLE DRINKING FOUNTAIN -FRONT ACCESS CAT. #1672-ADA-FA		
	MANUFACTURE DATE JANUARY 2005 TO PRESENT	DATE ISSUED 01/13/04	DRAWING NUMBER 9925-191-001



REFERENCE DRAWINGS	
ASSEMBLIES	NUMBER
VALVE BODY	9955-006-003
CHECKSTOP	9956-040-003
FIXTURE TRIM	9957-051-001
AIR-CONTROL SERVOMOTORS	
METERING	9955-000-002
NON-METERING	9955-001-002

NOTE: NON-METERING VALVE SHOWN



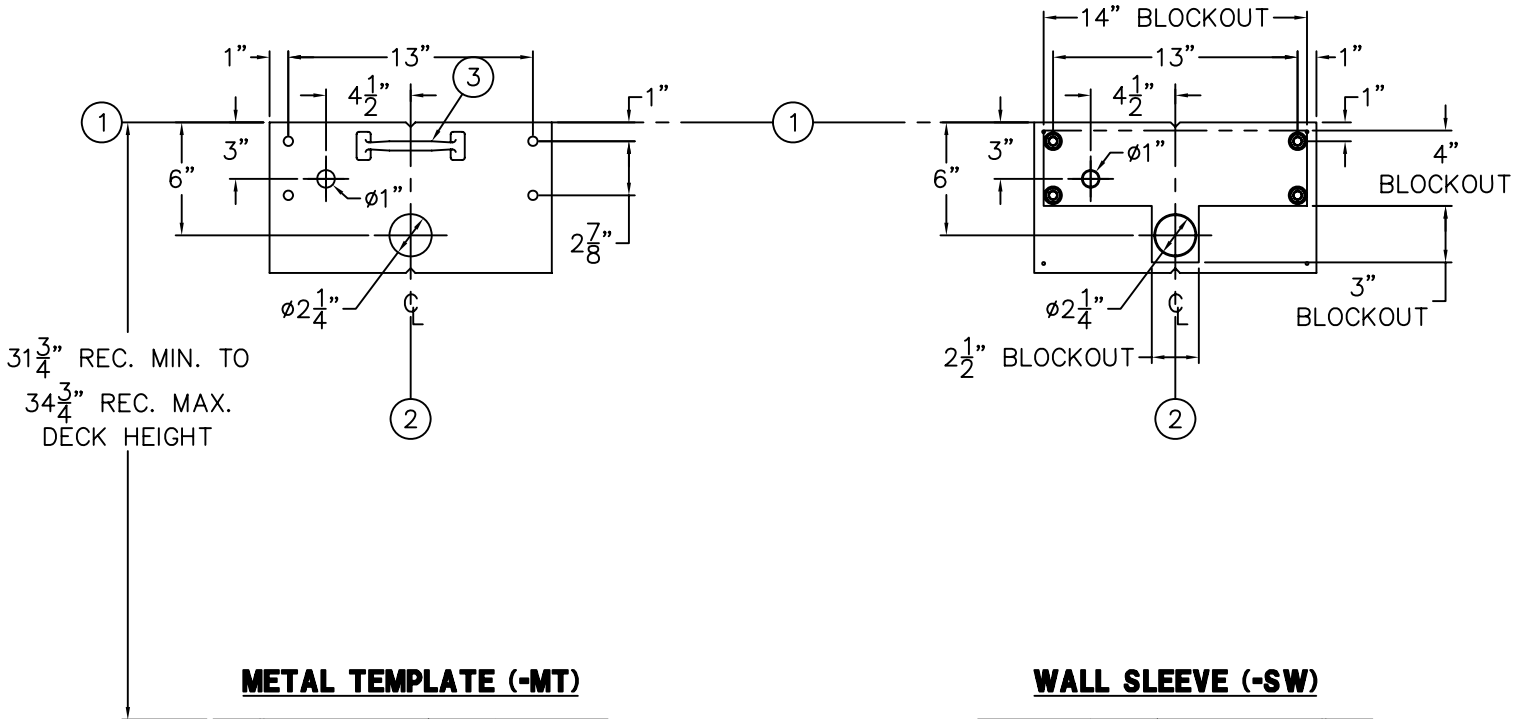
INSTALLATION INSTRUCTIONS:

- A- PRIOR TO INSTALLATION OF THE FIXTURE, MOUNT PUSHBUTTON ① AND BUBBLER ② TO THE BACKSPASH.
- B- INSTALL THE PLUMBING FIXTURE TO THE WALL INCLUDING UPPER SUPPORT PLATE ③.
- C- LOCATE AS REQUIRED AND MOUNT THE AIR-CONTROL VALVE ASSEMBLY ④. MAXIMUM ALLOWABLE DISTANCE BETWEEN PUSHBUTTON ① AND AIR-CONTROL SERVOMOTOR ⑤ IS 10 FEET. WALL ANCHORING HARDWARE ARE BY OTHERS.
- D- CONNECT 1/8" O.D. POLYETHYLENE AIR LINE ⑥ TO PUSHBUTTON ① AND SERVOMOTOR ⑤. HAND TIGHTEN USING FERRULE NUT PROVIDED. SEE DETAIL A. NOTE: WHEN METERING VALVE IS SPECIFIED, AIR LINE CONNECTS DIRECTLY TO VALVE TIMER ⑦. SEE DETAIL B.
- E- CONNECT 1/4" O.D. POLYETHYLENE WATER LINE ⑧ TO BUBBLER ② AND COMPRESSION NUT ⑨. HAND TIGHTEN USING FERRULE NUT PROVIDED.

- F- AFTER THOROUGHLY FLUSHING THE SUPPLY LINE, MAKE-UP 1/2" NPS FEMALE SUPPLY CONNECTION. NOTE: SUPPLY INLET CONNECTION WILL ACCOMODATE 1/2" NPT MALE ADAPTER. THREAD FLEX CONNECTOR HOSE ⑩ TO CHECKSTOP ⑪ AND SUPPLY STUB OUT.
- G- SEE APPROPRIATE SERVOMOTOR REFERENCE DRAWING FOR DETAILS AND TIMING INSTRUCTIONS.

NOTE:
 MAXIMUM RECOMMENDED WORKING WATER PRESSURE IS 100 PSI; TEMPERATURE IS 130° F; OUTLET TEMPERATURE IS RECOMMENDED AT A MAXIMUM OF 105° F.
 WARNING:
 PRIOR TO MAKING INSTALLATION, SUPPLY LINES MUST BE FLUSHED OF ALL FOREIGN MATERIAL SUCH AS PIPE DOPE, CHIPS, SOLDER, ETC. VALVE MUST BE DRAINED PRIOR TO BEING SUBJECTED TO FREEZING TEMPERATURES. MAXIMUM RECOMMENDED OUTLET WATER TEMPERATURE IS 105° F.

ACORN ENGINEERING COMPANY P.O. BOX 3527 INDUSTRY, CA. 91744 (626) 336-4561 FAX (626) 961-2200	TITLE (-03 SERIES) SINGLE TEMP AIR-CONTROL VALVE ASSEMBLY -NEW STYLE		
	MANUFACTURE DATE SEPTEMBER 1995 TO PRESENT	DATE ISSUED 11/01/95	DRAWING NUMBER 9905-001-003
		DATE REVISED 01/05/05	



METAL TEMPLATE (-MT)

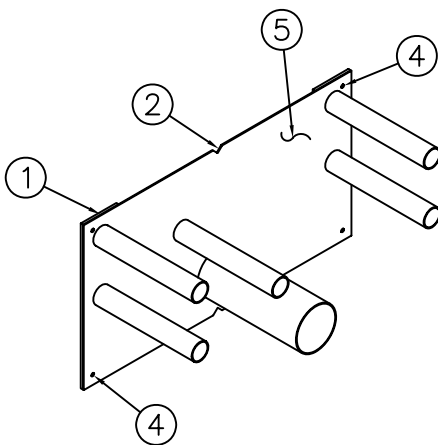
WALL SLEEVE (-SW)

-MT METAL TEMPLATES

- A- TEMPLATES ARE USED TO LAYOUT REQUIRED WALL OPENINGS FOR SUBSEQUENT FLAME CUTTING OR CORE DRILLING.
- B- STRIKE A HORIZONTAL CHALK LINE (1) ON THE WALL AT DIMENSION SHOWN, MEASURED FROM THE FIXTURE SIDE. THIS WILL LOCATE THE FIXTURE DECK HEIGHT.
- C- STRIKE A VERTICAL CHALK LINE (2) ON THE WALL TO INDICATE THE CENTERLINE OF THE FIXTURE. THIS WILL LOCATE THE VERTICAL NOTCHES ON THE TEMPLATE.
- D- USING HANDLE (3) ON TEMPLATE, PLACE TEMPLATE AGAINST WALL. ALIGN TOP OF TEMPLATE (1) AND VERTICAL NOTCHES (2) WITH CHALK LINES AND MARK FOR REQUIRED WALL OPENINGS.

-SW WALL SLEEVES

- A- SLEEVES ARE INSTALLED IN FORMS USING NAIL HOLES PROVIDED (4) OR GROUTED INTO BLOCK OR CEMENT WALLS BECOMING A PERMANENT PART OF THE WALL.
- NOTE: FOR POURED WALL CONSTRUCTION, TEMPORARY BRACING SHOULD BE INSTALLED WITHIN SLEEVE OPENINGS TO PREVENT DEFORMATION TO SLEEVES WHICH MAY OCCUR DURING POUR. DO NOT POUR CONCRETE DIRECTLY ON WALL SLEEVE.
- B- INSTALL SLEEVE WITH FLANGE (5) ON CHASE SIDE OF WALL.
- C- LOCATE TOP AND BOTTOM NOTCHES (2) AT VERTICAL CENTERLINE OF PLUMBING FIXTURE.
- D- LOCATE THE TOP OF THE FLANGE (1) AT DIMENSION SHOWN, MEASURED FROM THE FIXTURE SIDE. THIS WILL LOCATE THE FIXTURE DECK HEIGHT.
- E- WHEN SLEEVES ARE NOT AVAILABLE, BLOCKOUT FOR SLEEVE OPENINGS IN WALL PER DIMENSIONS SHOWN.



ACORN ENGINEERING COMPANY
P.O. BOX 3527 INDUSTRY, CA. 91744
(626) 336-4561 FAX (626) 961-2200

TITLE **-SW WALL SLEEVE & -MT METAL TEMPLATE - CAT. #1672-FA FOUNTAIN**

MANUFACTURE DATE OCTOBER, 2007 TO PRESENT	DATE ISSUED 10/22/07	DRAWING NUMBER 9925-226-001
	DATE REVISED	