

REFERENCE DRAWINGS	
VALVE BODY	9955-006-003
STOPS	9956-040-003
FIXTURE TRIM	9957-300-001
SHOWER HEAD	9970-000-003
MOUNTING HDWR.	9957-900-001
-SW SLEEVE/-MT TEMPLATE	9925-260-001

ELECTRICAL COMPONENTS	
VALVE CONTROLLER	9955-025-001
SOLENOID VALVE	9955-020-002
TRANSFORMER	9955-020-002
WIRING COMPONENTS	9955-020-002

NOTE: 1 - MAXIMUM RECOMMENDED WORKING WATER PRESSURE IS 100 PSI; TEMPERATURE IS 130°F; OUTLET TEMPERATURE IS RECOMMENDED AT A MAXIMUM OF 105°F.
 2 - TRANSFORMER MUST BE WIRED TO A GFI PROTECTED CIRCUIT. FIXTURE MUST BE EARTH GROUNDED PER N.E.C. (NATIONAL ELECTRICAL CODE).

WARNING: PRIOR TO MAKING INSTALLATION, SUPPLY LINES MUST BE FLUSHED OF ALL FOREIGN MATERIAL SUCH AS PIPE DOPE, CHIPS, SOLDER, ETC. VALVE MUST BE DRAINED PRIOR TO BEING SUBJECTED TO FREEZING TEMPERATURES.

INSTALLATION INSTRUCTIONS:

- A- PRIOR TO INSTALLATION OF THE SHOWER PANEL (1), MOUNT PUSHBUTTON (2) TO THE PANEL.
- B- HAND TIGHTEN (6) MOUNTING STUDS (3) INTO NUTS (4) ON THE BACK OF SHOWER PANEL (1). PLACE SHOWER PANEL AGAINST WALL OPENING. FROM CHASE SIDE, MOUNT BACK PLATES (5) ONTO STUDS; ATTACH WITH NUTS & WASHERS (6). NOTE: DO NOT EXCEED 6.5 FT/LBS MAXIMUM TORQUE ON MOUNTING NUTS (6).
- C- MOUNT SOLENOID VALVE ASSEMBLY (7) AS REQUIRED WITHIN 10 FEET OF THE FIXTURE. WALL FASTENERS BY OTHERS.
- D- MOUNT VALVE CONTROLLER (8) AS REQUIRED WITHIN 100 FEET OF THE PUSHBUTTON. CONNECT 1/8" O.D. POLYETHYLENE AIR LINE (9) FROM PUSHBUTTON (2) TO CONTROLLER (8) POSITION MARKED "ACTUATOR". HAND TIGHTEN THE FERRULE NUT AT PUSHBUTTON. SEE DETAIL "A".
- E- CONNECT 1/4" O.D. RISER TUBING (10) FROM SHOWER HEAD (11) TO VALVE ASSEMBLY (7) OUTLET. TIGHTEN THE FERRULE NUTS PROVIDED WATERTIGHT.

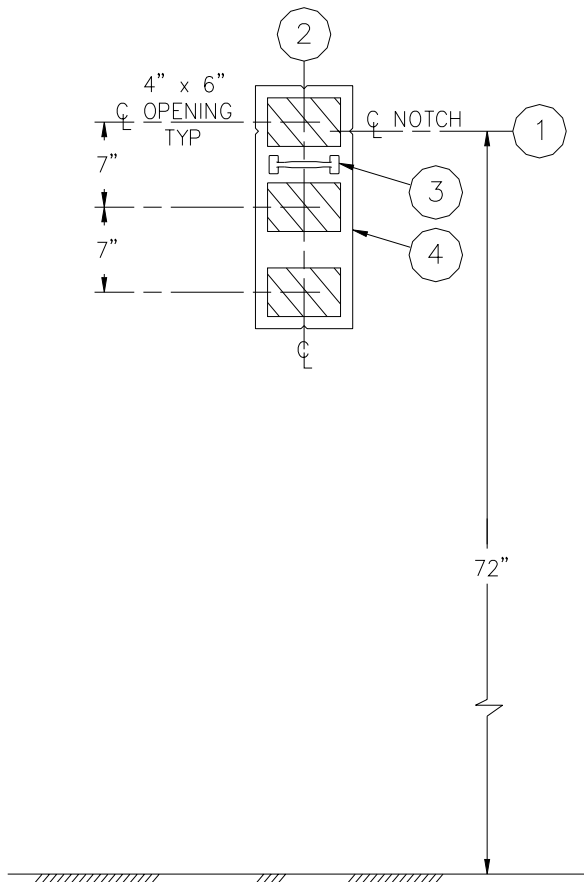
- H- CONNECT WIRES (12) (MARKED "VALVE") FROM CONTROLLER TO WIRES (13) FROM SOLENOID VALVE (14). ASSEMBLE USING THE WIRE CONNECTORS PROVIDED. EXTENSION WIRE MAY BE INCLUDED - IF ORDERED.
- I- CONNECT WIRES (15) FROM TRANSFORMER (24VAC) (16) TO VALVE CONTROLLER (8). ASSEMBLE USING WIRE CONNECTORS PROVIDED. EXTENSION WIRES FROM TRANSFORMER MAY BE INCLUDED - IF ORDERED.
- J- AFTER THOROUGHLY FLUSHING THE SUPPLY LINE, MAKE-UP SUPPLY CONNECTION (1/2" NPS FEMALE). THREAD FLEX CONNECTOR HOSE (17) FROM THE VALVE INLET TO SUPPLY STUB-OUT. (NOTE: THE SUPPLY INLET CONNECTION WILL ACCOMMODATE 1/2" NPT MALE ADAPTER.)
- K- SET TIMING ON THE VALVE CONTROLLER (8) AT DESIRED SETTING FOR FLOW DURATION.



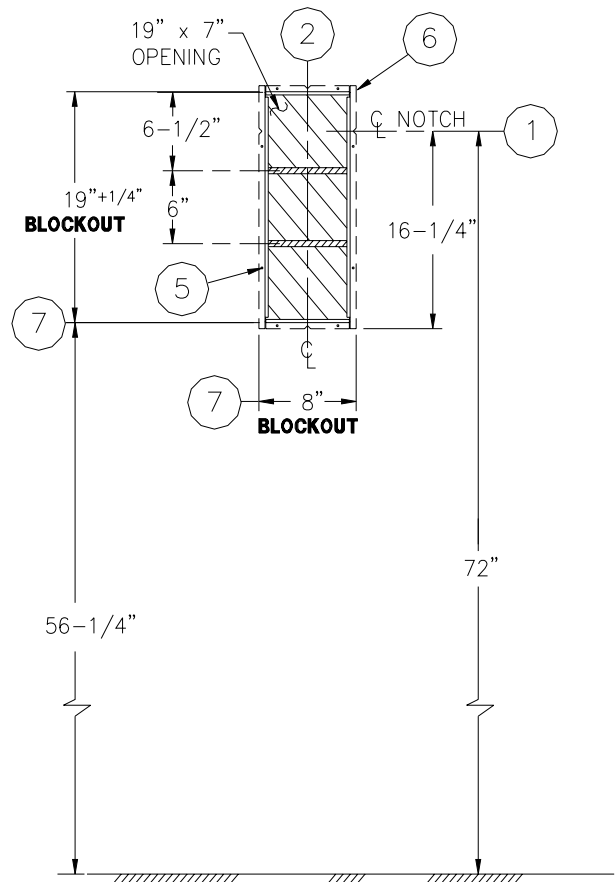
TITLE PENAL-PAK WALL SHOWERS - SINGLE TEMP. TIME-TROL - CAT. #1741-MVC1		
MANUFACTURE DATE SEPT 1995 TO PRESENT	DATE ISSUED 11/01/95	DRAWING NUMBER 9905-215-003
	DATE REVISED 11/10/03	



BOTH VIEWS ARE FROM CELL SIDE
 SHADED AREAS ARE REQUIRED WALL OPENINGS



METAL TEMPLATE (-MT)



WALL SLEEVE (-SW)

INSTALLATION INSTRUCTIONS

METAL TEMPLATES (-MT)

TEMPLATES ARE USED TO LAYOUT REQUIRED WALL OPENINGS FOR SUBSEQUENT FLAME CUTTING OR CORE DRILLING.

- A- STRIKE A HORIZONTAL CHALKLINE ① ON THE WALL 72" ABOVE FINISHED FLOOR. THIS WILL LOCATE CENTERLINE FOR HORIZONTAL NOTCHES ON TEMPLATE.
- B- STRIKE A VERTICAL CHALKLINE ② ON THE WALL TO INDICATE CENTERLINE OF FIXTURE. THIS WILL LOCATE FOR VERTICAL NOTCHES ON TEMPLATE.
- C- USING HANDLE ③ ON TEMPLATE ④, PLACE TEMPLATE AGAINST THE WALL, LOCATING NOTCHES AT CHALKLINES. MARK FOR WALL OPENINGS.

WALL SLEEVES (-SW)

SLEEVES ARE INSTALLED IN FORMS (USING NAIL HOLES ⑤ PROVIDED) OR GROUTED INTO BLOCK WALLS, BECOMING A PERMANENT PART OF THE WALL.

NOTE: FOR POURED WALL CONSTRUCTION, TEMPORARY BRACING SHOULD BE INSTALLED WITHIN SLEEVE OPENING TO PREVENT DEFORMATION TO SLEEVE WHICH MAY OCCUR DURING POUR. DO NOT POUR CONCRETE DIRECTLY ON TOP OF WALL SLEEVE.

- A- INSTALL SLEEVE WITH FLANGE ⑥ ON CHASE SIDE OF WALL.
- B- TOP AND BOTTOM NOTCHES TO BE LOCATED AT VERTICAL CENTERLINE ② OF SLEEVE.
- C- SIDE NOTCHES ① TO BE LOCATED AT 72" ABOVE THE FINISHED CELL SIDE FLOOR (SHOWER HEAD DISCHARGE HEIGHT).
- D- WHEN SLEEVES ARE NOT AVAILABLE USE BLOCKOUT DIMENSIONS SHOWN ⑦.



ACORN ENGINEERING COMPANY
 P.O. BOX 3527 INDUSTRY, CA. 91744
 (626) 336-4561 FAX (626) 961-2200

TITLE **SLEEVES AND TEMPLATES (CAT. #1741-1 & #1741-3) SINGLE TEMP**

MANUFACTURE DATE
JUNE 1971
TO PRESENT

DATE ISSUED
3-1-90
 DATE REVISED
1/30/96

DRAWING NUMBER
9925-260-001