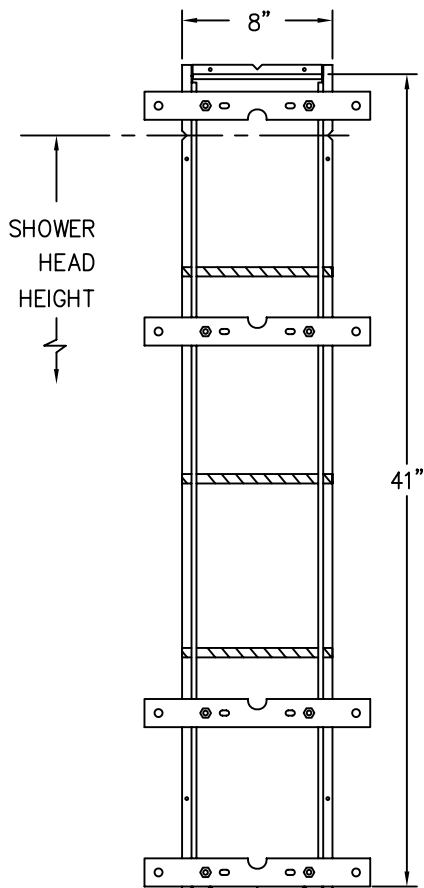
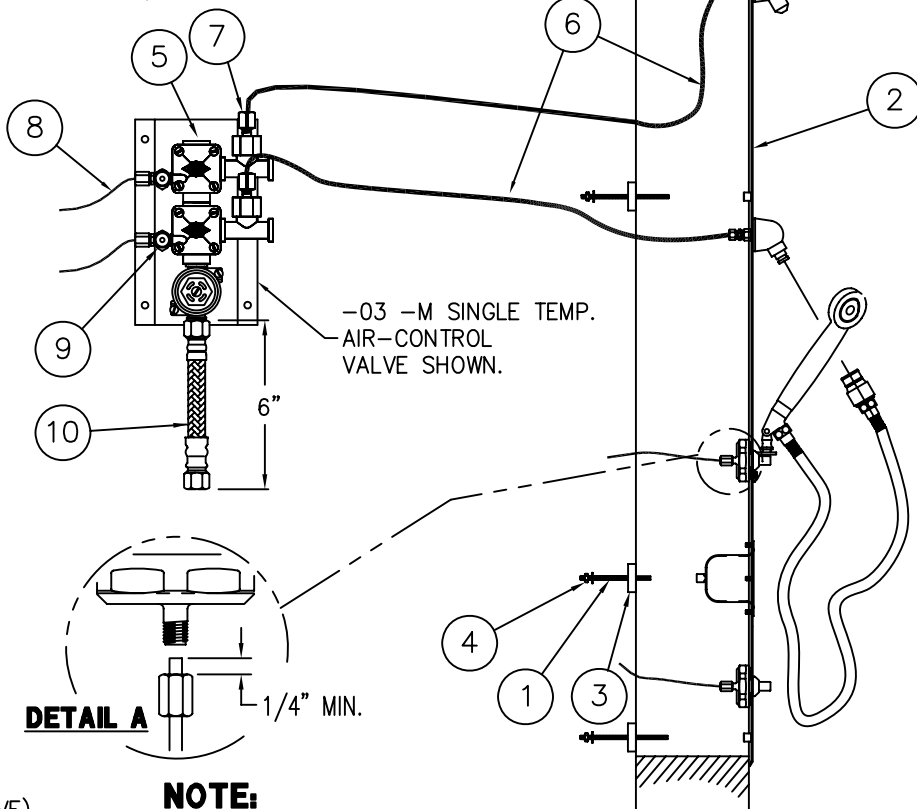




REFERENCE DRAWINGS	
ASSEMBLIES	NUMBERS
-03 VALVE BODY	9955-006-003
-04 VALVE BODY	9955-005-003
STOP	9956-040-003
-M SERVOMOTOR	9955-000-002
SHOWER HEAD	9970-000-003
FLEX SHOWER HEAD	9970-102-003
FIXTURE TRIM	9957-300-001
MOUNTING HDWR.	9957-900-001
-SW SLEEVE / -MT TEMPLATE	9925-265-001



VIEW IS FROM CHASE SIDE
(SHOWN WITH OPTIONAL WALL SLEEVE)



NOTE:

REFER TO A.D.A. ACCESSIBILITY GUIDELINES FOR COMPLETE INSTALLATION REQUIREMENTS.

INSTALLATION INSTRUCTIONS

- A- HAND TIGHTEN (8) MOUNTING STUDS (1) INTO NUTS (11) ON BACK OF SHOWER PANEL (2). PLACE SHOWER PANEL AGAINST WALL OPENING. FROM CHASE SIDE, MOUNT BACK PLATES (3) ONTO STUDS; ATTACH NUTS AND WASHERS (4). NOTE: DO NOT EXCEED 6.5 FT/LBS MAXIMUM TORQUE ON MOUNTING NUTS (4).
- B- MOUNT AIR-CONTROL VALVE ASSEMBLY (5) AS REQUIRED WITHIN 10 FEET OF THE PUSHBUTTON.
- C- INSTALL RISER TUBING (6). ATTACH TO SHOWER HEAD AND VALVE COMPRESSION ELBOW (7). TIGHTEN WATERTIGHT.
- D- CONNECT 1/8" OD AIR TUBING (8) TO THE AIR-CONTROL SERVOMOTOR (9) USING FERRULE NUTS PROVIDED. HAND TIGHTEN. SEE DETAIL "A".

- E- AFTER THOROUGHLY FLUSHING THE SUPPLY LINES, MAKE-UP SUPPLY CONNECTIONS (1/2" NPS FEMALE). THREAD FLEX CONNECTOR HOSE (10) TO VALVE (5) INLET AND TO SUPPLY STUBOUTS. (NOTE: SUPPLY INLET CONNECTION WILL ACCOMMODATE 1/2" NPT MALE ADAPTER.)

- F- SEE APPROPRIATE SERVOMOTOR REFERENCE DRAWINGS FOR DETAILS AND TIMING INSTRUCTIONS.

NOTE:

MAXIMUM RECOMMENDED WORKING PRESSURE IS 100PSI; TEMPERATURE IS 130°F; OUTLET TEMPERATURE IS RECOMMENDED AT A MAXIMUM OF 105°F.

WARNING:

PRIOR TO MAKING INSTALLATION, SUPPLY LINES MUST BE FLUSHED OF ALL FOREIGN MATERIAL SUCH AS PIPE DOPE, CHIPS, ETC. VALVE MUST BE DRAINED PRIOR TO BEING SUBJECTED TO FREEZING TEMPERATURES. MAXIMUM RECOMMENDED OUTLET WATER TEMPERATURE IS 105°F.

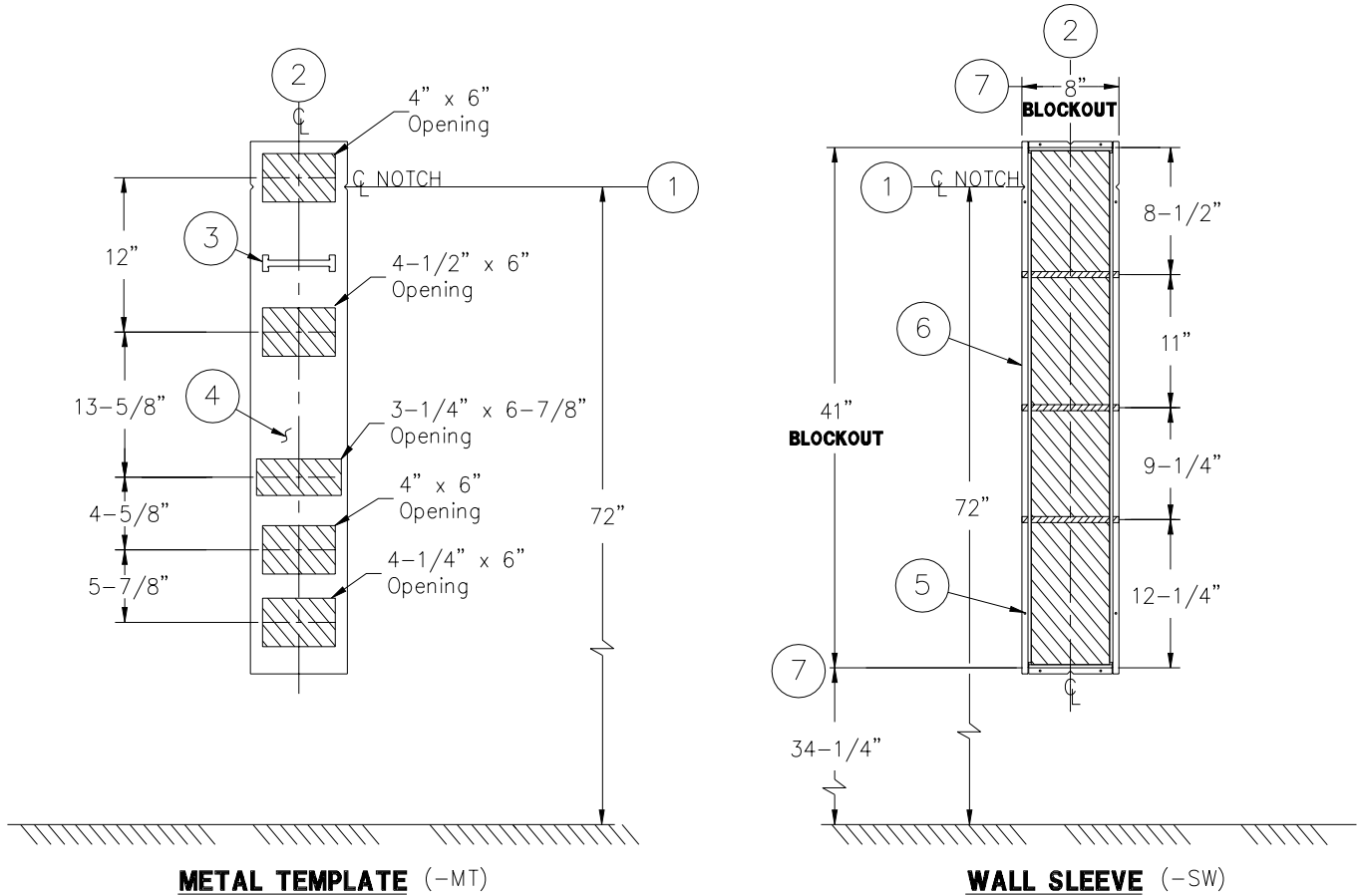
ACORN ENGINEERING COMPANY
P.O. BOX 3527 INDUSTRY, CA. 91744
(626) 336-4561 FAX (626) 961-2200

TITLE HANDICAPPED PENAL-PAK WALL SHOWER 1741-ADA		
MANUFACTURE DATE SEPTEMBER 2001 TO PRESENT	DATE ISSUED 11/07/01	DRAWING NUMBER 9925-107-003
	DATE REVISED 11/10/08	



BOTH VIEWS ARE FROM CELL SIDE

SHADED AREAS ARE REQUIRED WALL OPENINGS



METAL TEMPLATE (-MT)

WALL SLEEVE (-SW)

INSTALLATION INSTRUCTIONS

METAL TEMPLATES (-MT)

TEMPLATES ARE USED TO LAYOUT REQUIRED WALL OPENINGS FOR SUBSEQUENT FLAME CUTTING OR CORE DRILLING.

- A- STRIKE A HORIZONTAL CHALKLINE ① ON THE WALL 72" ABOVE FINISHED FLOOR. THIS WILL LOCATE CENTERLINE FOR HORIZONTAL NOTCHES ON TEMPLATE.
- B- STRIKE A VERTICAL CHALKLINE ② ON THE WALL TO INDICATE CENTERLINE OF FIXTURE. THIS WILL LOCATE FOR VERTICAL NOTCHES ON TEMPLATE.
- C- USING HANDLE ③ ON TEMPLATE ④, PLACE TEMPLATE AGAINST THE WALL, LOCATING NOTCHES AT CHALKLINES. MARK FOR WALL OPENINGS.

WALL SLEEVES (-SW)

SLEEVES ARE INSTALLED IN FORMS (USING NAIL HOLES ⑤ PROVIDED) OR GROUTED INTO BLOCK WALLS, BECOMING A PERMANENT PART OF THE WALL.

NOTE: FOR POURED WALL CONSTRUCTION, TEMPORARY BRACING SHOULD BE INSTALLED WITHIN SLEEVE OPENING TO PREVENT DEFORMATION TO SLEEVE WHICH MAY OCCUR DURING POUR. DO NOT POUR CONCRETE DIRECTLY ON TOP OF WALL SLEEVE.

- A- INSTALL SLEEVE WITH FLANGE ⑥ ON CHASE SIDE OF WALL.
- B- TOP AND BOTTOM NOTCHES TO BE LOCATED AT VERTICAL CENTERLINE ② OF SLEEVE.
- C- SIDE NOTCHES ① TO BE LOCATED AT 72" ABOVE THE FINISHED CELL SIDE FLOOR (SHOWER HEAD DISCHARGE HEIGHT).
- D- WHEN SLEEVES ARE NOT AVAILABLE USE BLOCKOUT DIMENSIONS SHOWN ⑦.



ACORN ENGINEERING COMPANY
P.O. BOX 3527 INDUSTRY, CA. 91744
(626) 336-4561 FAX (626) 961-2200

TITLE

SLEEVE AND TEMPLATE PENAL HC SHOWER (CAT. #1741-ADA)

MANUFACTURE DATE

**JUNE 1971
TO PRESENT**

DATE ISSUED

9-29-92

DATE REVISED

10/11/99

DRAWING NUMBER

9925-265-001