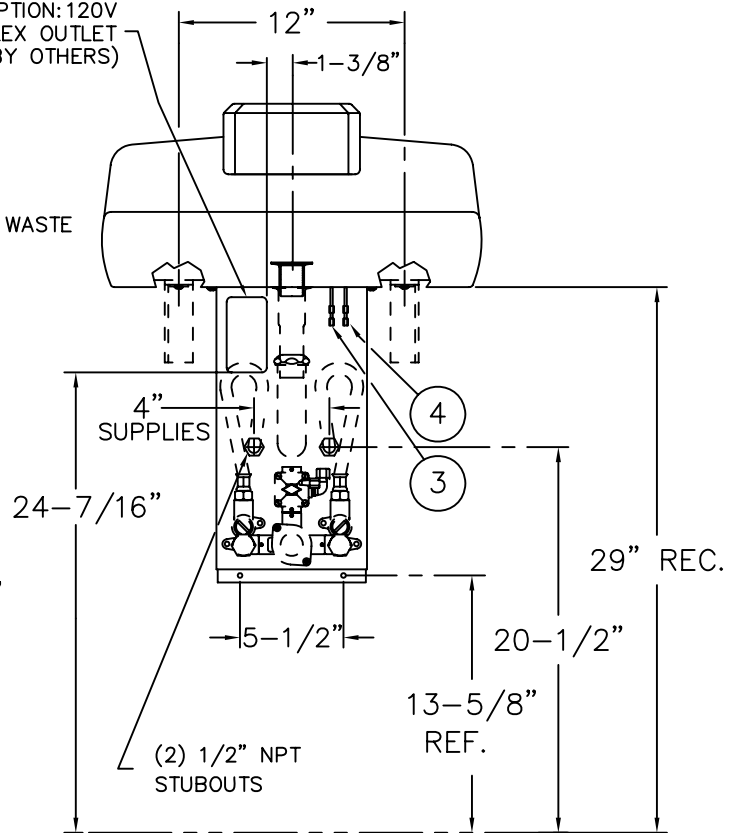
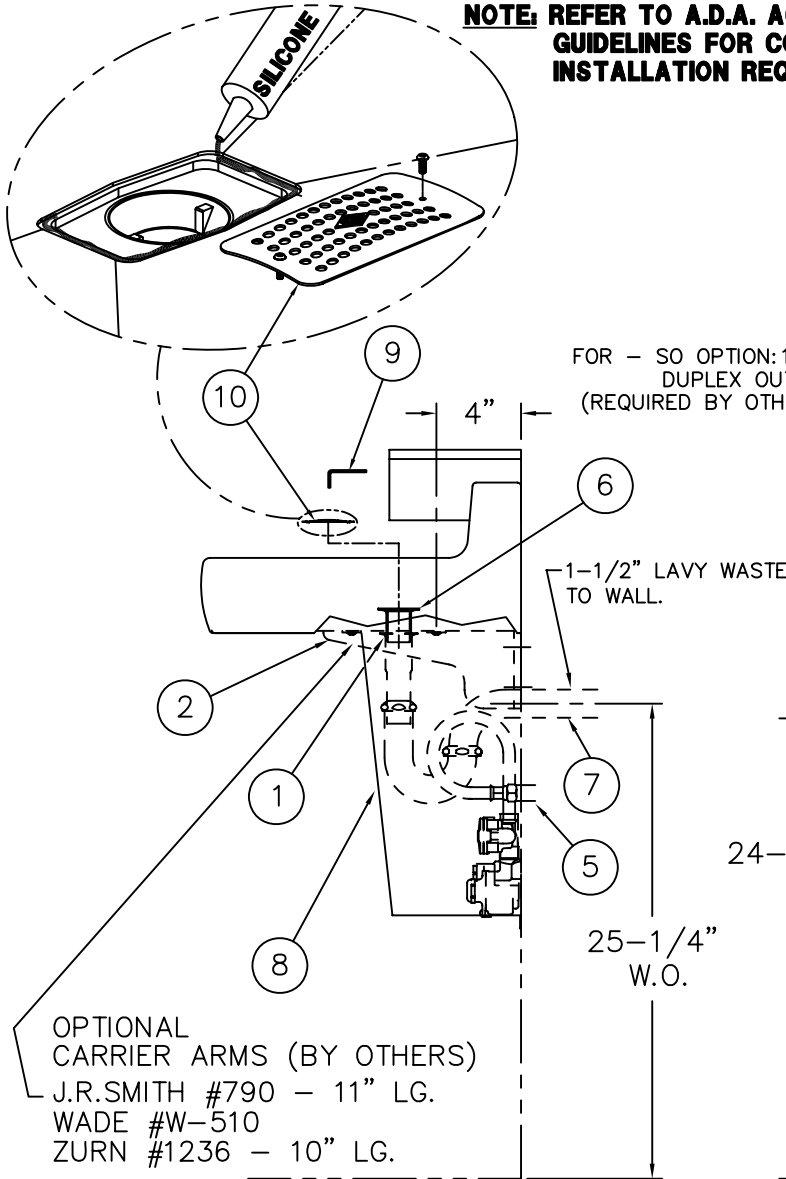




NOTE: REFER TO A.D.A. ACCESSIBILITY GUIDELINES FOR COMPLETE INSTALLATION REQUIREMENTS.

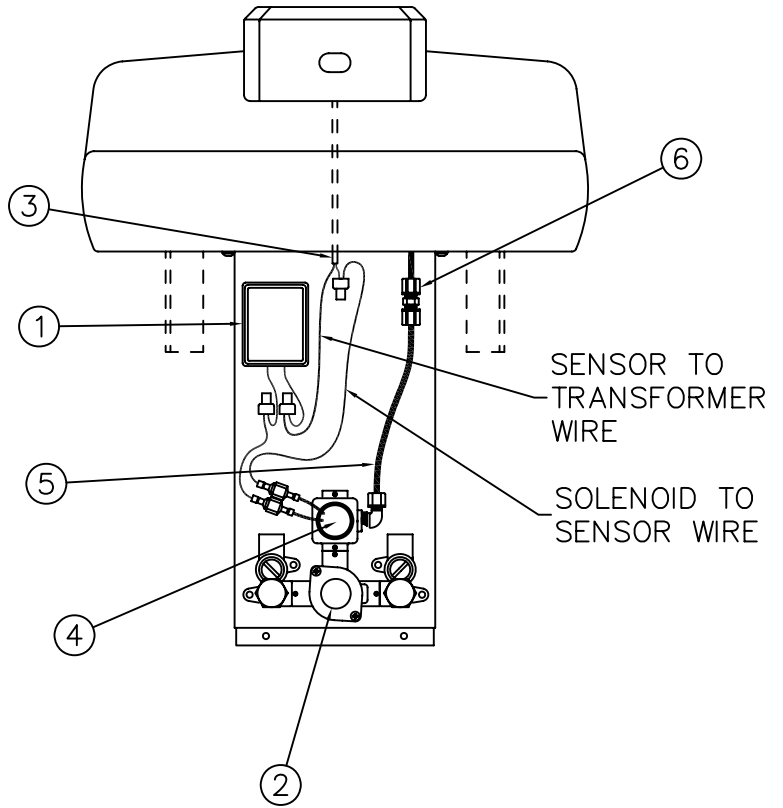
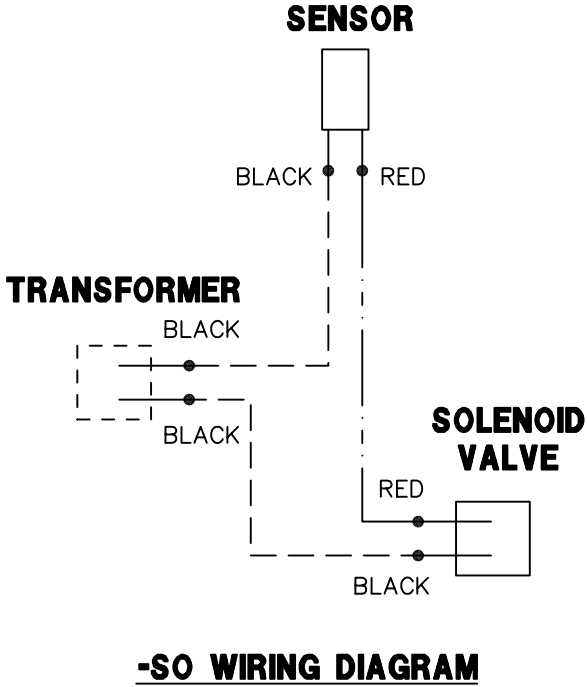
REFERENCE DRAWINGS	
VALVE ASSEMBLY	NUMBER
METERING SERVOMOTOR	9955-000-002
-MXP PRESSURE VALVE	9975-034-001
-MXT THERMOSTATIC VALVE	9975-202-002
CHECKSTOP/STRAINER	9956-040-001
-SO SENSOR OPERATION	9912-531-001
NOZZLE ASSEMBLY	9971-070-001



INSTALLATION INSTRUCTIONS

- A—REMOVE STRAINER AND INSTALL DRAIN SPUD (1) IN BOWL WITH PLUMBERS PUTTY. THREAD LOCKNUT ONTO SPUD.
- B—INSTALL EXPOSED CARRIER ARMS TO WALL (2) MOUNT BOWL ASSEMBLY TO CARRIER ARMS BY ATTACHING TO ANCHOR TAPPINGS.
- C—ATTACH 1/8" O.D. PLASTIC AIR LINES WITH 1/8" PLASTIC COMPRESSION NUTS (3) TO INLET AIR CONTROLLED VALVES.
- D—ATTACH 1/4" O.D. PLASTIC TUBE FROM AIR CONTROLLED VALVE TO PLASTIC COMPRESSION FITTING. (4)
- E—CONNECT SUPPLY PIPING TO VALVE SUPPLY INLETS. (5) (OPTIONAL FLEX CONNECTORS SHOWN)
- F—APPLY SILICONE CAULKING AROUND STRAINER (10) PERIMETER. ASSEMBLE STRAINER TO DRAIN (6) AND ATTACH P-TRAP (BY OTHERS) TIGHTEN LOCKNUT.
- G—CONNECT LAVY WASTE P-TRAP (7) TO 1-1/2" WASTE FROM WALL.
- H—INSTALL FRONT PANEL (8) TO BOWL USING EXISTING ANCHOR TAPPINGS UNDERNEATH. MOUNT FRONT PANEL TO WALL. WALL ANCHORS BY OTHERS.
- I—5/32" ALLEN WRENCH (9) INCLUDED WITH EACH ORDER.
- J—IF -SO SENSOR OPERATION INSTALLATION IS REQUIRED REFER TO DWG#9912-531-001

ACORN ENGINEERING COMPANY P.O. BOX 3527 INDUSTRY, CA. 91744 (626) 336-4561 FAX (626) 961-2200	TITLE TERRAZZO UNI-LAV ROUGH-IN & INSTALLATION (3601-BF) (3601-ADA)	
	MANUFACTURE DATE JANUARY 1991 TO PRESENT	DATE ISSUED 1-19-92
	DATE REVISED 08/03/07	



REFERENCE DRAWINGS	
SENSOR	9955-017-001
SENSOR HARDWARE	9955-015-002
SENSOR MAINTENANCE	9940-010-001
CHECKSTOP/STRAINER	9956-040-001
-MXP PRESSURE VALVE	9975-034-001
-MXT THERMOSTATIC VALVE	9975-202-002
NOZZLE ASSEMBLY	9971-010-001

INSTALLATION INSTRUCTIONS

- A- ASSEMBLE FIXTURE PER THE TERRAZZO UNI-LAV INSTALLATION DRAWING # 9912-520-001 STEPS: A & B.
- B- SUPPLY 120V/60Hz/3 AMPS MAXIMUM DUPLEX ELECTRIC RECEPTACLE TO CONNECT FACTORY SUPPLIED 24VAC/50VA PLUG-IN TRANSFORMER ①.

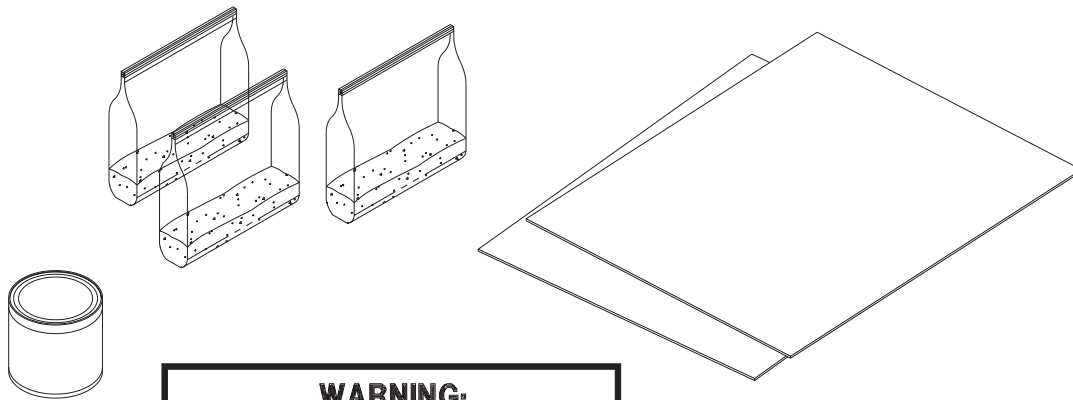
NOTE: RECEPTACLE MUST BE WIRED TO GFI PROTECTED CIRCUIT. FIXTURE MUST BE EARTH GROUNDED PER N.E.C. (NATIONAL ELECTRICAL CODE).

- C- MOUNT SOLENOID VALVE ASSEMBLY ② WITH MIXING VALVE TO WALL USING HARDWARE BY OTHERS.
- D- CONNECT WIRESET ③ FROM SENSOR TO SOLENOID VALVE ④ AND TRANSFORMER ①.
- E- PLUG-IN TRANSFORMER ① TO DUPLEX RECEPTACLE.
- F- ATTACH 1/4" O.D. PLASTIC TUBE ⑤ FROM SOLENOID VALVE ④ TO PLASTIC COMPRESSION FITTING ⑥.
- G- COMPLETE INSTALLATION OF FIXTURE PER INSTALLATION DRAWING # 9912-520-001 STEPS: E THRU H.



ACORN ENGINEERING COMPANY
P.O. BOX 3527 INDUSTRY, CA. 91744
(626) 336-4561 FAX (626) 961-2200

TITLE TERRAZZO UNI-LAV ASSEMBLY FOR -SO SENSOR OPERATION - MODEL #3601		
MANUFACTURE DATE JANUARY 1991 TO PRESENT	DATE ISSUED 03/02/92	DRAWING NUMBER 9912-531-001
	DATE REVISED 03/20/08	



WARNING:
READ MATERIAL SAFETY DATA SHEETS BEFORE USING.

INSTRUCTIONS:

- A- COMPLETELY CLEAN SURFACE TO BE REPAIRED. ALLOW TO DRY 24 HOURS BEFORE PROCEEDING.
- B- FOR SMALL REPAIRS MIX CEMENT(S) TO PROPER CONSISTENCY. FOR LARGER AREAS ADD AGGREGATE TO MIX AS NECESSARY. SEE STEP E BELOW.
- C- PRESS CEMENT INTO AREA TO BE REPAIRED.
- D- DAMPEN A PUTTY KNIFE WITH WATER AND LEVEL THE CEMENT WITH THE SURROUNDING SURFACE.
- E- IF THE REPAIR IS LARGE AND/OR TOO DEEP, PRESS A SMALL AMOUNT OF AGGREGATE INTO THE CEMENT, ALLOWING THEM TO PROJECT SLIGHTLY HIGHER THAN THE SURROUNDING SURFACE.
- F- ALLOW THE REPAIRED AREA TO DRY 4-6 HOURS BEFORE PROCEEDING.
- G- USING THE 20 GRIT SANDPAPER SUPPLIED, SAND THE REPAIRED AREA UNTIL SMOOTH AND LEVEL WITH SURROUNDING SURFACE.
- H- USING THE 220 GRIT SANDPAPER SUPPLIED, SAND THE REPAIRED AREA AND IMMEDIATELY SURROUNDING AREA TO PREPARE FOR THE URETHANE COATING. IT IS ONLY NECESSARY TO FEATHER THE COATING SURROUNDING THE REPAIR, NOT REMOVE IT COMPLETELY.
- I- CLEAN THE AREA TO BE COATED TO REMOVE ALL RESIDUAL SANDING DUST. IF WATER IS USED, ALLOW TO DRY FOR 2-3 HOURS BEFORE PROCEEDING.
- J- APPLY 1-2 COATS OF URETHANE AS NEEDED, ALLOWING SEVERAL HOURS BETWEEN COATS. ALLOW 24 HOURS FOR DRYING BEFORE EXPOSURE TO WATER.

TERRAZZO REPAIR KIT

- 1 CAN OF AIR-DRY URETHANE
- 1 SHEET 20 GRIT SANDPAPER
- 1 SHEET 220 GRIT SANDPAPER
- MATERIAL SAFETY DATA SHEET
- COLOR MIX & AGGREGATES:

PALOMINO COLOR MIX:
6 OZ. WHITE CEMENT
3 OZ. AGGREGATE, IVORY #1
3 OZ. AGGREGATE, IVORY #2
PLATINUM GRAY COLOR MIX:
6 OZ. GRAY CEMENT
6 OZ. WHITE CEMENT
3 OZ. AGGREGATE, INYO WHITE #1
3 OZ. AGGREGATE, INYO WHITE #2
HYBRID ROSE COLOR MIX:
6 OZ. WHITE CEMENT
3 OZ. AGGREGATE, WHITE ROSE #1
3 OZ. AGGREGATE, WHITE ROSE #2
3 OZ. AGGREGATE, SAN SABA WHITE #1
3 OZ. AGGREGATE, SAN SABA WHITE #2
MIDNIGHT ROSE COLOR MIX:
6 OZ. BLACK PIGMENT
6 OZ. WHITE CEMENT
3 OZ. AGGREGATE, INYO WHITE #1
3 OZ. AGGREGATE, INYO WHITE #2
3 OZ. AGGREGATE, WHITE ROSE #1
3 OZ. AGGREGATE, WHITE ROSE #2

<p>ACORN ENGINEERING COMPANY P.O. BOX 3527 INDUSTRY, CA. 91744 (626) 336-4561 FAX (626) 961-2200</p>	TERRAZZO REPAIR KIT INSTRUCTIONS	
	MANUFACTURE DATE JUNE 1995 TO PRESENT	DATE ISSUED 04/08/03 DATE REVISED