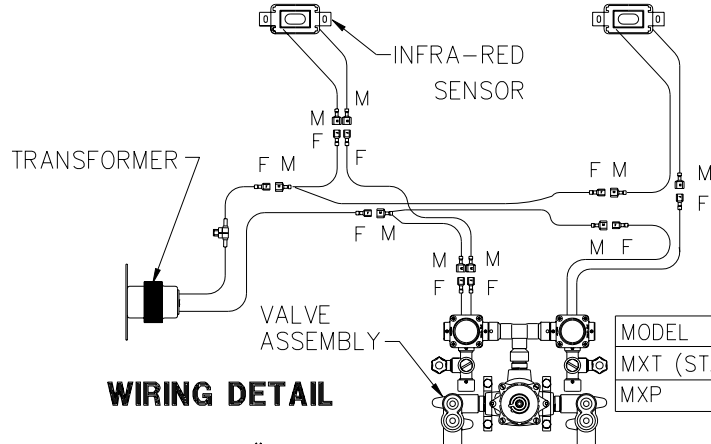
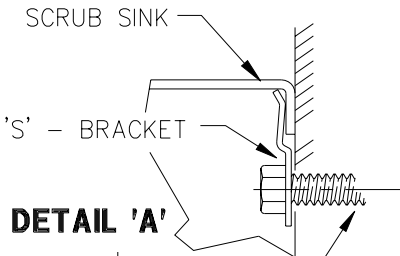
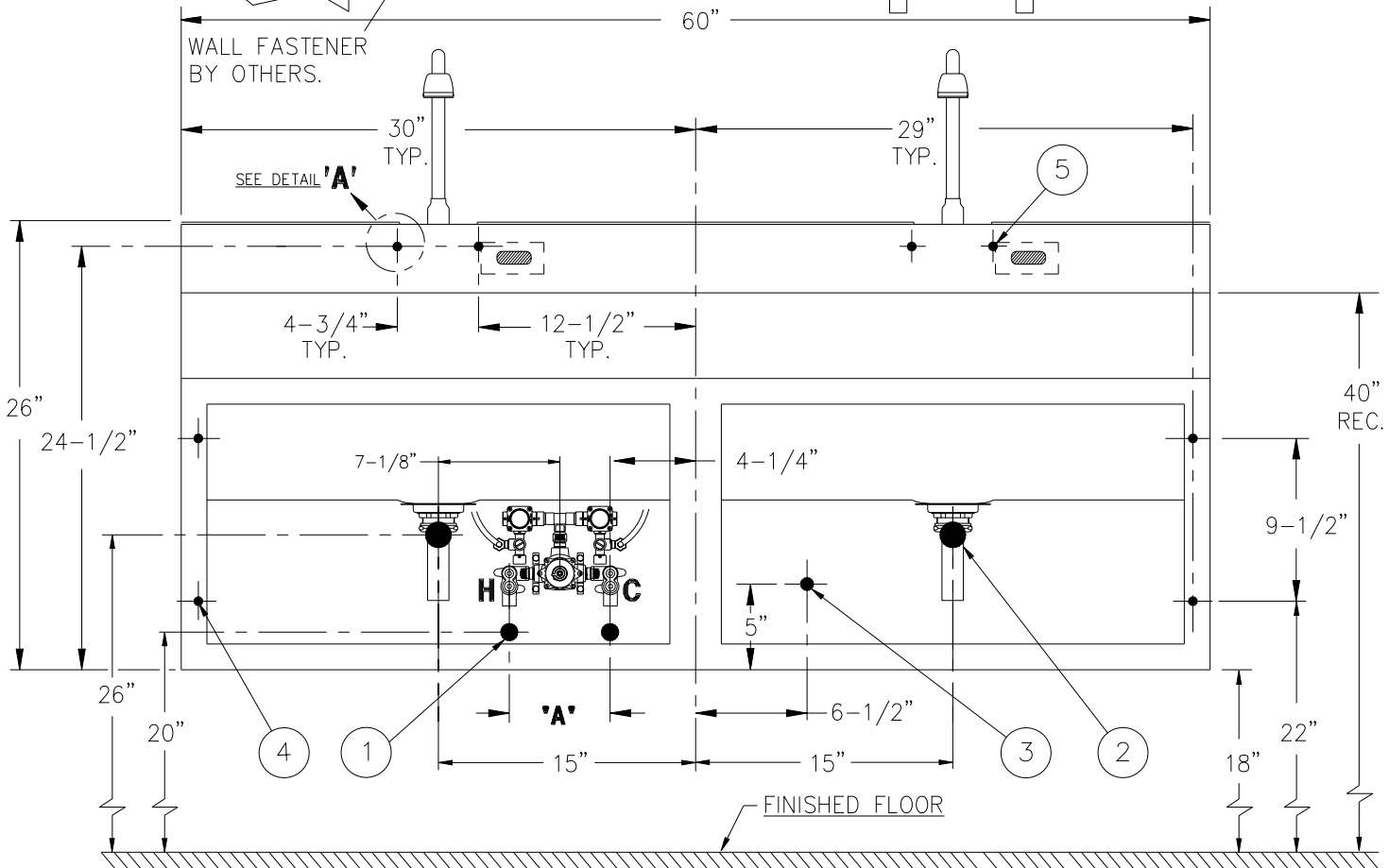




REFERENCE DRAWINGS	
ASSEMBLIES	NUMBER
CHECK STOP/STRAINER	9956-040-001
SENSOR/SOLENOID	9955-015-002
MIXING VALVE	9975-040-001



MODEL	"A" DIMENSIONS
MXT (STANDARD)	7-1/2"
MXP	5-5/8"



**INSTALLATION INSTRUCTIONS**

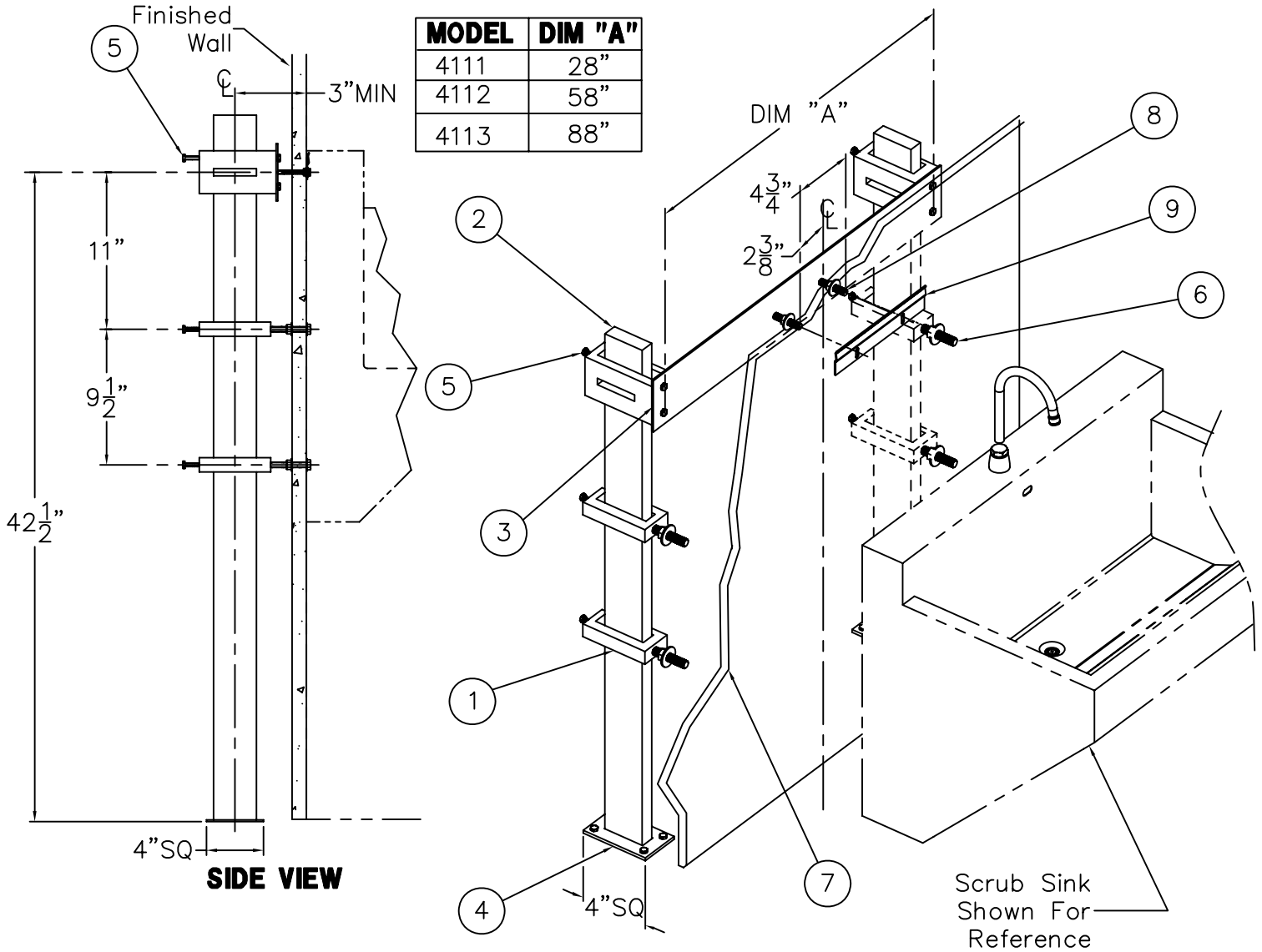
- A- ROUGH-IN FOR THE FOLLOWING PLUMBING CONNECTIONS:
- SUPPLY INLETS 1/2" NPT (1).
  - WASTE OUTLET 1-1/2" O.D. AT WALL (2). DIMENSION SHOWN IS FOR REFERENCE ONLY. P-TRAP IS BY OTHERS.
  - LOCATE ELECTRICAL STUBOUT (3), SUPPLY 120V 60HZ 3 AMPS MAX. POWER TO FACTORY INSTALLED TRANSFORMER (WITH JUNCTION BOX).

- B- LAYOUT FOR ANCHOR PATTERN AND DRILL:
- (4) 1/2" UNC WALL FASTENERS FOR ANCHORS BY OTHERS (4).
  - (4) 1/4" UNC WALL FASTENERS FOR S-BRACKETS, WALL ANCHORS BY OTHERS (5). SEE WIRING DETAIL ABOVE.
- NOTE:** TRANSFORMER & VALVE TO BE MOUNTED TO WALL (SHIP LOOSE) INFRA-RED SENSOR TO BE SHIPPED INSTALLED.
- NOTE:** TRANSFORMER MUST BE WIRED TO A GFI PROTECTED CIRCUIT. FIXTURE MUST BE EARTH GROUNDED PER N.E.C.

**ACORN ENGINEERING COMPANY**  
P.O. BOX 3527 INDUSTRY, CA. 91744  
(626) 336-4561 FAX (626) 961-2200


TITLE **2 PERSON COMPACT SURGICAL SCRUB SINK MODEL NO. 4112**

MANUFACTURE DATE <b>JANUARY 1994 TO PRESENT</b>	DATE ISSUED <b>01-06-95</b>	DRAWING NUMBER <b>9930-006-001</b>
	DATE REVISED <b>02-10-99</b>	



**INSTALLATION INSTRUCTIONS:**

- A- PRIOR TO INSTALLING FINISH WALL COVERING (7) ASSEMBLE -MC MOUNTING CARRIER (7)
- B- PLACE COLLARS (1) ON STANCHIONS (2) AND INSTALL HORIZONTAL SUPPORTS (3) ONTO STANCHIONS (2) .
- C- ANCHOR SUPPORT BASES (4) TO A RIGID FLOOR OR OTHER RIGID SUBSTRUCTURE WITH 9/16" DIA CAPNUTS & WASHERS (4) BY OTHERS.
- D- ADJUST COLLARS (1) TO PROPER HEIGHT AND TIGHTEN SET SCREWS (5)
- E- INSTALL WALL COVERING (7) ALLOWING ACCESS TO 3/8" MOUNTING STUDS (6) AND 1/4" STUDS (8) FOR "S" CLIP MOUNTING.
- F- INSTALL "S" CLIP MOUNTING BRACKET(S) (9) ON FINISHED FACE OF WALL (7) .
- G- COMPLETE ANY NECESSARY ROUGH-IN CONNECTIONS (NOT-SHOWN) FOR SUPPLY AND WASTE PIPING. COMPLETE INSTALLATION OF FINISHED WALL AND MOUNT SCRUB SINK TO "S" CLIP(S) AND PROTRUDING STUDS.

 ACORN ENGINEERING COMPANY P.O. BOX 3527 INDUSTRY, CA. 91744 (626) 336-4561 FAX (626) 961-2200	TITLE <b>-MC MOUNTING CARRIER INSTALLATION DETAIL</b>	
	MANUFACTURE DATE <b>JANUARY 1994</b> <b>TO PRESENT</b>	DATE ISSUED <b>05/01/00</b> DATE REVISED <b>6/11/08</b>