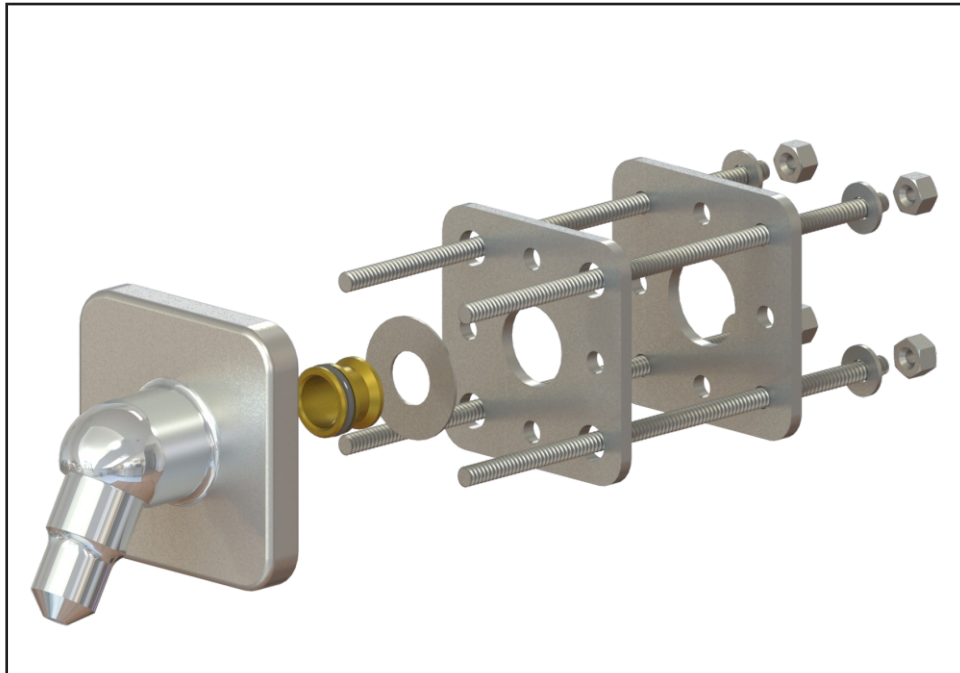




Option -B



Back Plate -

This option is used with square flanged shower heads. When this option is selected it provides backing for anchoring with front mount plate, all thread studs, nuts and washers provided. May only be used when installed on walls with an accessible pipe chase.

Please visit www.acorneng.com for most current specifications.

⚠ WARNING: Cancer and Reproductive Harm - www.P65Warnings.ca.gov

