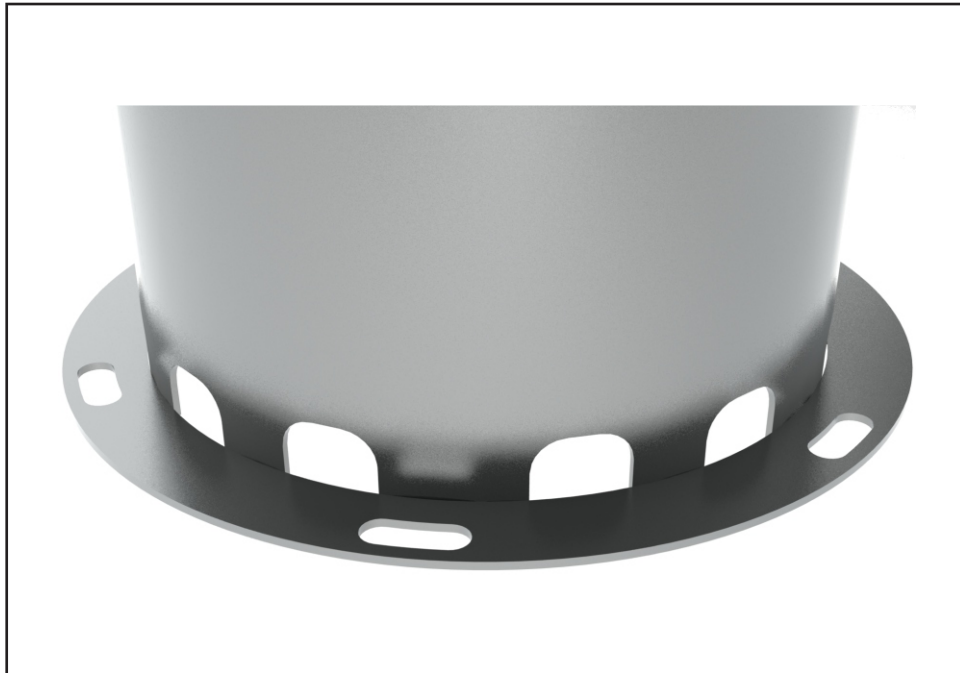




Option -CF



Adjustable Column Flange -

This option is a one-piece collar and flange assembly built right into the column. It allows rotational adjustment for misaligned drain bases. The adjustable flange is constructed of 14 gage, type 304 stainless steel and is fully welded to the column. The weld is ground smooth, and the entire column is polished to a satin finish.

Please visit www.acorneng.com for most current specifications.

⚠ WARNING: Cancer and Reproductive Harm - www.P65Warnings.ca.gov

