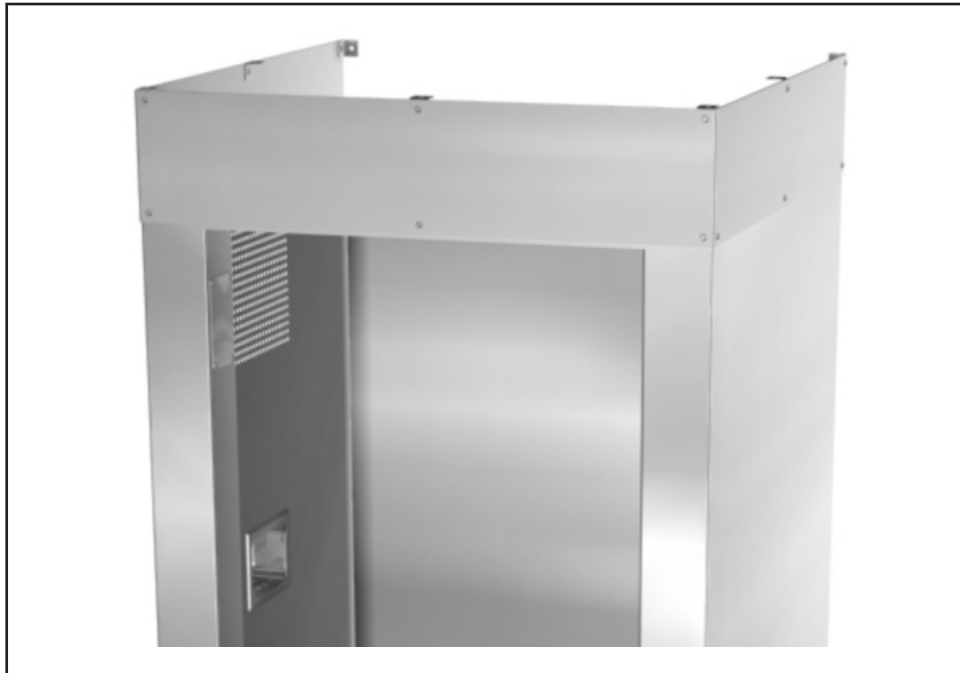




Option -HAC-TSW



Horizontal Angled Closure - Top Single Wall -

By running along the front face and both the left and right side of the shower cabinet, this closure conceals gaps between the top of the shower cabinet and the ceiling when the cabinet is mounted against a single wall. Attachments for ceiling, wall, and cabinet are provided.

Please visit www.acorneng.com for most current specifications.

⚠ WARNING: Cancer and Reproductive Harm - www.P65Warnings.ca.gov

