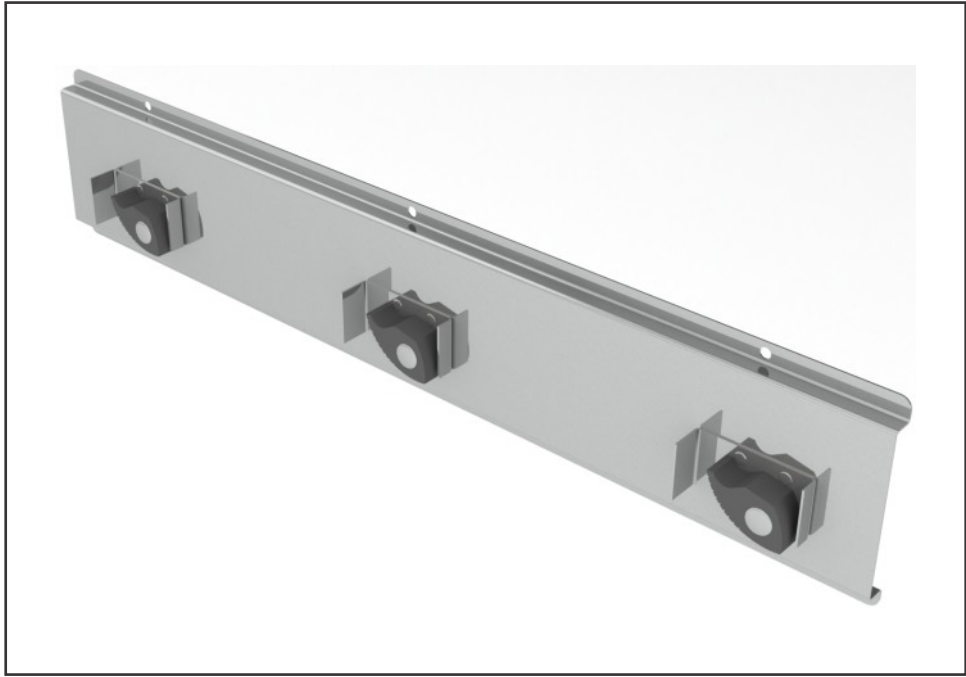


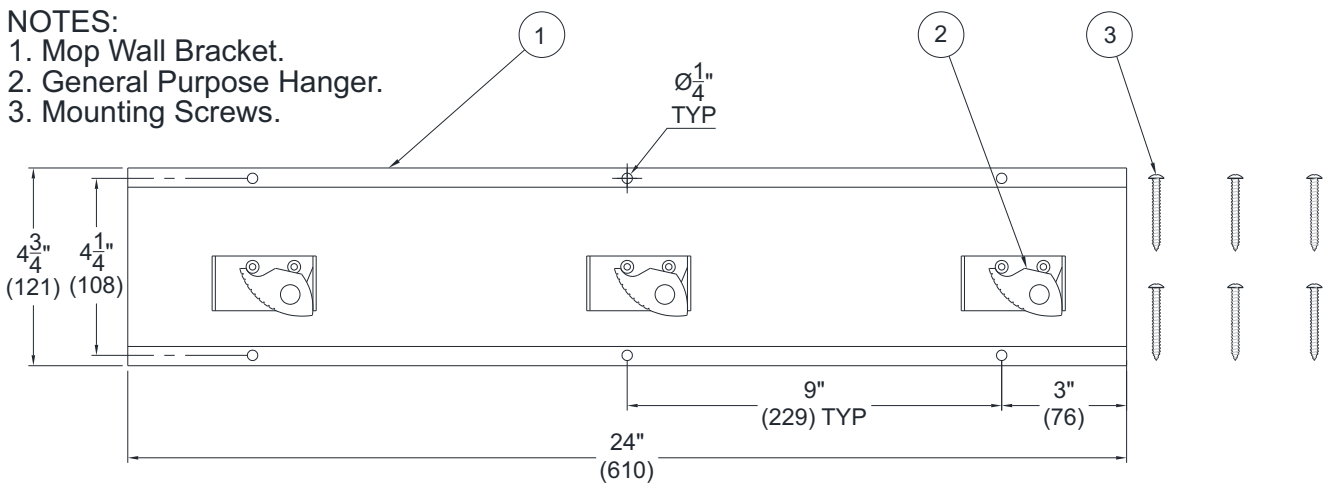


Option -KMH



NOTES:

- 1. Mop Wall Bracket.
- 2. General Purpose Hanger.
- 3. Mounting Screws.



Mop Hanger -

This option provides a stainless steel mounting bracket to organize and secure mops or brooms out of the way when not in use. Mounting bracket is 4-3/4" H x 23" W and includes 3 mop handle grips and (6) #10-32 x 1-3/4" Phillips Truss Head Wall Screws.

Please visit www.acorneng.com for most current specifications.

WARNING: Cancer and Reproductive Harm - www.P65Warnings.ca.gov

