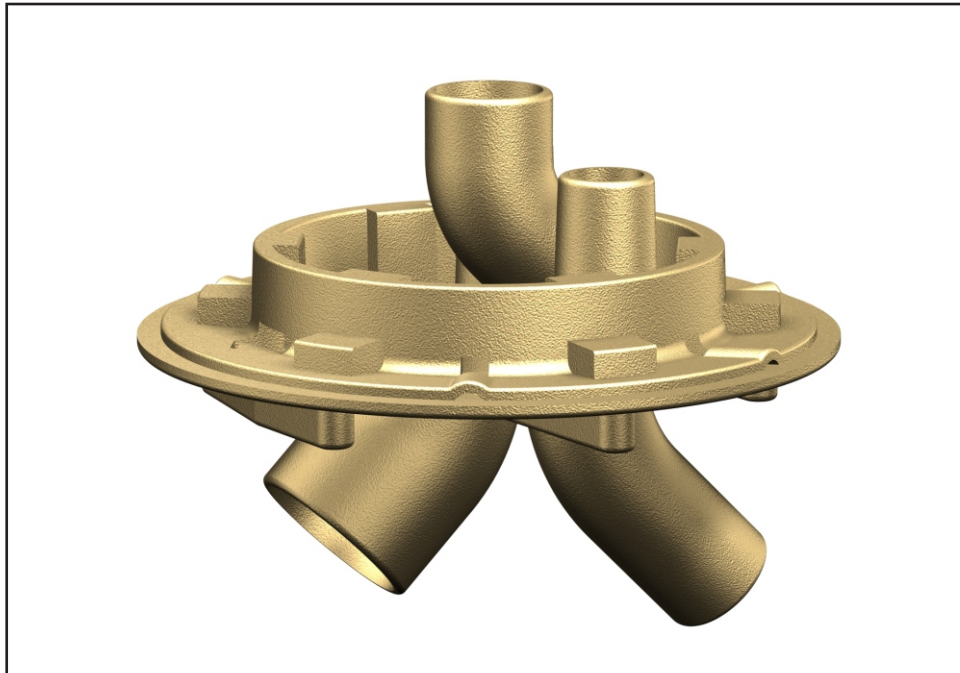




## Option -T25



### Shower Drain Base Top Supply for Center Vent -

Provides a cast iron shower mounting base and drain for use with 600 and 700 series column showers. 2" IPS center vent pipe connection and clamping collar, intended for use where vent line is to run vertically through column shower and vent connection is made at the drain fixture fitting. Drain includes a 3" no-hub outlet connection. Column Shower fixture should be provided with drain opening punching at bottom of column.

Please visit [www.acorneng.com](http://www.acorneng.com) for most current specifications.

⚠ WARNING: Cancer and Reproductive Harm - [www.P65Warnings.ca.gov](http://www.P65Warnings.ca.gov)

