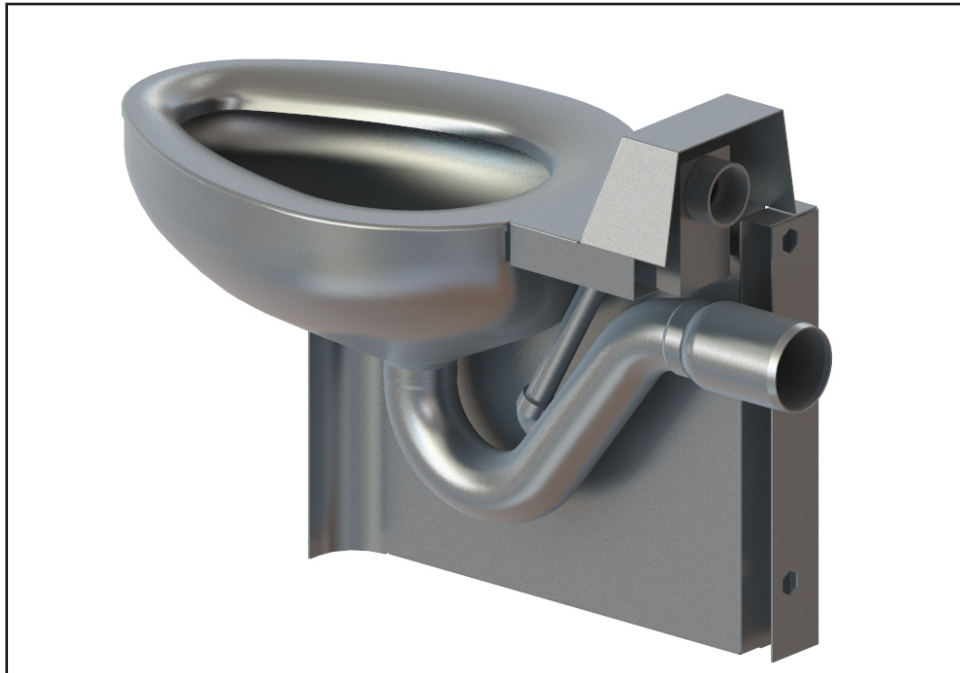




## Option -W03B



### 3" Waste Outlet -

This option provides standard 2-3/8" O.D. Toilet bowl P-trap and includes an integral 3" O.D. plain end outlet connection that extends 3" beyond the rear of the fixture. This option will not alter the fixture flush valve rating or waste outlet rough-in location and still allows for passage of 2-1/8" diameter ball.

Please visit [www.acorneng.com](http://www.acorneng.com) for most current specifications.

⚠ WARNING: Cancer and Reproductive Harm - [www.P65Warnings.ca.gov](http://www.P65Warnings.ca.gov)

