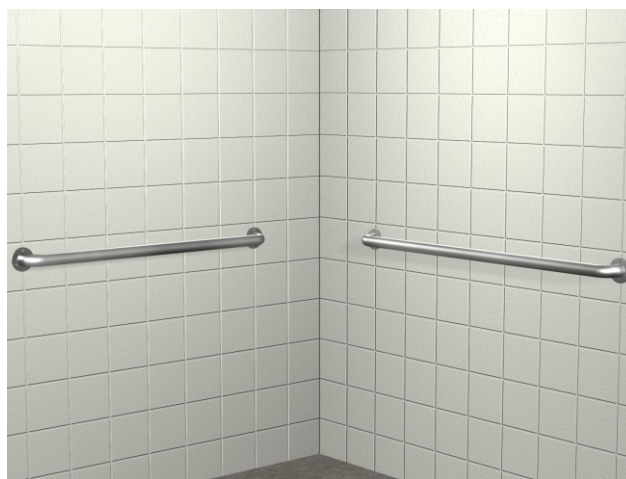




Shower-Ware® 1108 Series

Grab Bars - ADA Compliant



1108-4 & 1108-5

Fixture May Show Some Available Options

Please visit www.acorneng.com for most current specifications.

Grab Bars - ADA Compliant

Grab Bars are designed to meet the needs of the disabled. Grab bars are constructed of 1-1/2" outer diameter type 304 stainless steel tubing with exposed surfaces polished to a satin finish and include 3" diameter wall flanges countersunk for furnished 2" long stainless steel vandal-resistant screws. Grab bars meet or exceed ANSI, UFAS and ADA requirements for structural strength and have a 1-1/2" space between the grab bar and the mounting surface. Selection of appropriate length, configuration, adequate wall backing and installation dependent on application will determine compliance for accessibility. Consult applicable codes for complete requirements. Compliance is subject to the interpretation and requirements of the local code authority. Grab bars are not recommended for installation in areas of high security.

Shower-Ware® 1108: Grab Bars - ADA Compliant



MODEL NUMBER AND OPTIONS SELECTION

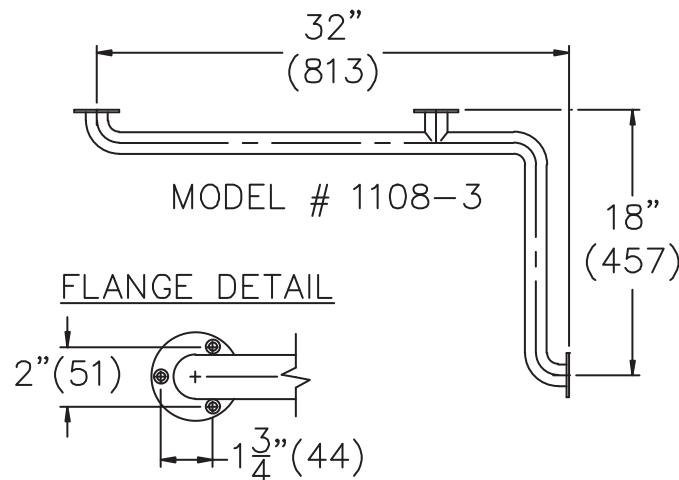
Product Options

* None Available

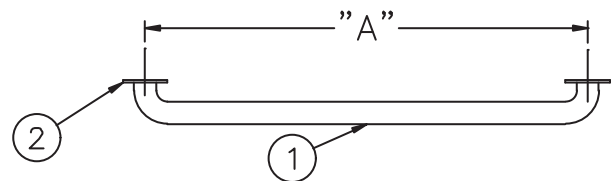
BASE MODEL NUMBER

- 1108-1 Grab Bar, 24" Long
- 1108-2 Grab Bar, 30" Long
- 1108-3 Two-Wall Grab Bar, 32" x 18" Long
- 1108-4 Grab Bar, 36" Long
- 1108-5 Grab Bar, 42" Long
- 1108-6 Grab Bar, 48" Long

Please visit www.acorneng.com for most current specifications.



MODEL NO.	"A"
1108-1	24" (610)
1108-2	30" (762)
1108-4	36" (914)
1108-5	42" (1067)
1108-6	48" (1219)



NOTES:

1. 1-1/2" O.D. Stainless Steel Tube.
2. 3" O.D. Stainless Steel Flange.

⚠ WARNING: Cancer and Reproductive Harm - www.P65Warnings.ca.gov

<p>Important: Installation instructions and current rough-in are furnished with each fixture. Do not rough in without certified dimensions. <small>Dimensions are subject to manufacturer's tolerance of plus or minus 1/4" and change without notice. Acorn assumes no responsibility for use of void or superseded data. © Copyright 2007 Acorn Engineering Company</small></p>	
<p style="text-align: center;">Selection Summary</p> <p>Model No. & Option _____</p> <p>Quantity _____</p>	<p style="text-align: center;">Approved for Manufacturing</p> <p>Company _____ Title _____</p> <p>Signature _____ Date _____</p>