



## Penal-Ware® 1730 Series

Cabinet Shower



**CONTROLS**  
INSIDE

1730-WCL-SHL-03-M-RD

Fixture May Show Some Available Options

Please visit [www.acorneng.com](http://www.acorneng.com) for most current specifications

### Cabinet Shower

**Cabinet** is fabricated of heavy gage type 304 stainless steel. Construction is seamless welded. Exposed sides of the exterior and the interior, except the Shower Floor, have a satin finish. Shower Floor has a slip resistant, matte finish. A 8-3/4" x 8-3/4" Vent Grille is provided with 1/4" square holes providing 20 square inches of free area. Fixture requires wall openings and an accessible chase for installation and maintenance. Optional Wall Sleeve or Metal Template is recommended for all installations for required wall openings.

**Shower Floor** has stainless steel reinforcing. Standard Elbow Waste is 2-3/8" OD plain end.

**Valve** is a pneumatically operated, pushbutton Air-Control Valve using atmospheric air. Pushbutton is vandal-resistant and requires less than 5 pounds of force to activate Valve. Valve is metering, non-hold open type. Valve timing is adjustable from 5 to 60 seconds. Valve includes a 1.6 GPM flow restrictor and can be remotely located up to 10 feet from the operating pushbutton. Valve conforms with lead-free requirements of NSF61, Section 9.

**Showerhead** and Pushbutton Escutcheon are chrome-plated brass. The Acorn Showerhead is factory installed on the inside of Door Jamb with concealed piping to the chase wall. Piping from the chase wall to the Valve is furnished loose for field installation.

**Regularly Furnished** items include a metering Air-Control Valve, a stainless steel surface mounted Soap Dish with tamper-resistant Fasteners, Studs, Anchor Plate, a collapsible Towel Hook welded on the outside of Door Jamb, and Wall Mounting Hardware.

### GUIDE SPECIFICATION

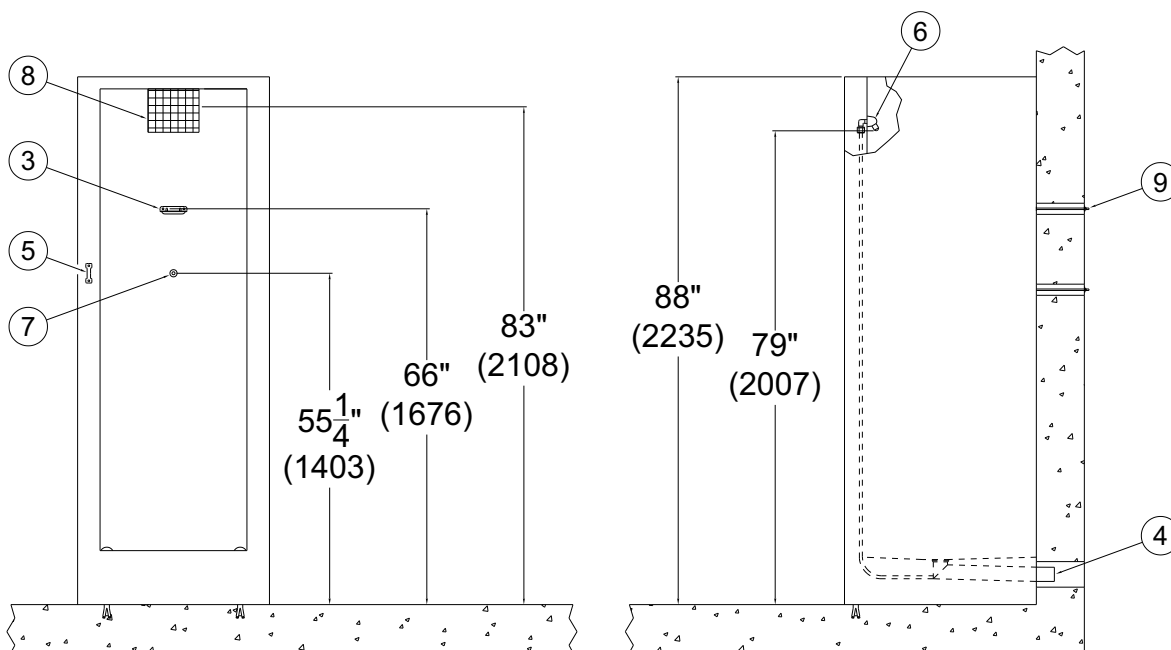
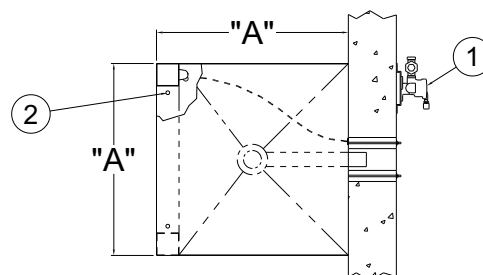
Provide and install Acorn Cabinet Shower (specify model number and options). Cabinet shall be one piece, heavy gage type 304 stainless steel. All seams shall be continuously welded. Exposed surfaces shall have a satin finish, except the Shower Floor, which shall have a slip-resistant, matte finish. Cabinet shall have an integral Vent 8-3/4" x 8-3/4" with 1/4" holes, providing 20 square inches of free area. Showerhead shall be mounted on inside of Door Jamb with concealed piping to the chase wall. Valve shall be Air-Control metering type. Collapsible Towel Hook shall also be welded on the outside of the entry. Cabinet Shower shall be installed in accordance with manufacturers recommendations.



**NOTES:**

1. Optional -03-M Air-Control Valve Shown
2. Optional -TA Threshold Anchors Shown
3. Surface Mounted Soap Dish
4. Elbow Waste Outlet
5. Collapsible Towel Hook
6. Penal Showerhead
7. Penal Pushbutton
8. Integral Vent Grille Located on Chase Wall
9. Wall Mounting Hardware

MODEL NO.	"A"
1730	30"
1732	32"
1736	35-3/4"
1736-KD	36"



**1730-WCB-SHL-03-M**

# Penal-Ware®: 1730 Cabinet Shower



## BASE MODEL NUMBER

- ☐ 1730 30" x 30" Cabinet Shower  
☐ 1732 32" x 32" Cabinet Shower  
☐ 1736 36" x 36" Cabinet Shower

## WALL THICKNESS AND TYPE (Must Specify)

Thickness: \_\_\_\_\_ Type: ☐ Concrete ☐ Block ☐ Steel

## CHASE WALL OUTLET (Must Specify)

- ☐ -WCB Back Wall  
☐ -WCL Left Wall  
☐ -WCR Right Wall

## POLISHED EXTERIOR WALLS (Must Specify)

- ☐ -PWB Polished Exterior Wall Back  
☐ -PWL Polished Exterior Wall Left  
☐ -PWR Polished Exterior Wall Right  
☐ -PWN Polished Exterior Wall None

## SHOWERHEAD LOCATION (Must Specify)

- ☐ -SHL Showerhead Left Column  
☐ -SHR Showerhead Right Column

## MODEL NUMBER AND OPTIONS SELECTION

### VALVE SELECTION (Must Specify)

#### Air-Control (Pneumatic)

- ☐ -03-M Single Temp, Metering  
☐ -04-M Hot & Cold, Metering

#### T/P Mixing Valve (SV16)

- ☐ -8 ASSE 1016 Compliant T/P Temperature/  
Pressure Balancing Mixing Valve w/ Patented  
ADA Compliant Ligature Resistant Tri-Lever  
Handle (Chase Wall Only)  
☐ -8MV ASSE 1016 Compliant T/P Temperature/  
Pressure Balancing Mixing Valve w/ Single-  
Temp Metering Valve & Patented ADA  
Compliant Ligature Resistant Tri-Lever Handle  
(Chase Wall Only)

#### Master-Trol® (Electronic)

- ☐ -EVS1 Single Temp  
☐ -EVS2 Hot & Cold  
☐ -EVSP1 Single Temp, Piezo Button  
☐ -EVSP2 Hot & Cold, Piezo Buttons

#### Master-Trol® PLUS (Electronic)

- ☐ -MTP1 Single Temp  
☐ -MTP2 Hot & Cold  
☐ -MTPP1 Single Temp, Piezo Button  
☐ -MTPP2 Hot & Cold, Piezo Buttons

#### Time-Trol® (Electronic)

- ☐ -MVC1 Single Temp  
☐ -MVC2 Hot & Cold

#### Programmable (Electronic) w/9VDC Plug-In Transformer

- ☐ -PPZ1 Single Temp Programmable Piezo Button  
☐ -PPZ2 Hot & Cold Programmable Piezo Buttons

#### Valve By Others

N/A

## VALVE OPTIONS

- ☐ -BRS Brass Body Valve  
☐ -MA2 Manifolder, 2-Stack  
☐ -PBH Hemispherical Pushbutton  
☐ -CI Cycle-Interrupt (-MVC option only)  
☐ -TF Transformer, 120VAC to 24VAC (-MVC option only)

## SHOWERHEAD OPTIONS

- ☐ -CSH Conical Showerhead  
☐ -PYY Penal Lockable Universal Ball Joint

## WASTE OPTIONS

- ☐ -IC Inside Caulk Waste  
☐ -PT Integral P-Trap Waste  
☐ -TW1 Thru-Wall Waste Connection with P-Trap & Cleanout

## PRODUCT OPTIONS

- ☐ -EG Enviro-Glaze, Specify Color: \_\_\_\_\_  
☐ -F Flow Control  
☐ 2.0 GPM (Not Available For Use in California)  
☐ -FG 14 Gage Cabinet  
☐ -KD Knock-Down Cabinet  
☐ -LSD Less Surface Mounted Soap Dish  
☐ -LVG Less Vent Grille  
☐ -MD Modesty Door ☐ Hinged Left ☐ Hinged Right  
☐ -MT Metal Template (Only 1 Required Per Project)  
☐ -RD Recessed Soap Dish  
☐ -SR Shower Receptor  
☐ -SW Wall Sleeve  
☐ -TA Threshold Anchors

## CLOSURE PANELS (Must Specify)

**\*\*Refer to Installation Drawings 9925-117-001 and 9925-119-001 For Details Required**

- ☐ None No Closures Required

**\*\*If Closures Are Required Type Must Be Specified Below**

- ☐ Provide at Later Date (Dimensions to Follow)  
☐ Provide With Cabinet  
☐ -CHV Horizontal & Vertical Closure  
☐ -HAC Horizontal & Angled Closure(s)  
☐ -AL ☐ -AR ☐ -TSW  
☐ -STC Sloping Top Closure

Please visit [www.acorneng.com](http://www.acorneng.com) for most current specifications

**WARNING:** Cancer and Reproductive Harm - [www.P65Warnings.ca.gov](http://www.P65Warnings.ca.gov)

<b>Important:</b> Installation instructions and current rough-in are furnished with each fixture. Do not rough in without certified dimensions. Dimensions are subject to manufacturer's tolerance of plus or minus 1/4" and change without notice. Acorn assumes no responsibility for use of void or superseded data. © Copyright 2006 Acorn Engineering Company	
<b>Selection Summary</b> Model No. & Option _____ Quantity _____	<b>Approved for Manufacturing</b> Company _____ Title _____ Signature _____ Date _____