



## Dura-Ware® 1951LC Series

20" Rectangular Lavatory



1951LC-1-DMS-04

Fixture May Show Some Available Options

Please visit [www.acorneng.com](http://www.acorneng.com) for most current specifications.

### 20" Rectangular Lavatory

Fixture is arranged to be installed on a finished wall from the front side utilizing a concealed arm carrier by others. Fixture is fabricated of 16 gage, type 304 stainless steel and is seamless welded construction. Exterior has a #4 satin finish. Units may be punched for Faucet provided by others (Must specify punching required).

**Vandal Resistance Details:** Units are intended for commercial applications and provide moderate vandal resistance due to open bottom. For Enclosed Bottom when subject to high vandalism, refer to Model 1652FALRB.

**Lavatory Rectangular Bowl** is 14" x 12" x 6" deep. Lavatory deck has an integral self-draining soap dish. Lavatory includes 1-1/2" diameter drain punching to receive optional -GE or -GT grid strainer.

**Available Lavatory Valves:** Valve and faucet/spouts all conform with lead free requirements for NSF61, Section 9, 1997 and CHSC 116875.

1. Air-Control pneumatically operated, pushbutton valve using atmospheric air. Pushbutton is vandal-resistant and requires less than 5 pounds to activate valve. Valve is direct acting, non-metering type and is optionally available as metering with non-hold open feature. Metering valve timing is adjustable from 5 to 60 seconds. Valve can be remotely located up to 10 feet from the operating pushbutton. Air-Control valve options require an accessible pipe chase for installation and service.
2. Centerset with gooseneck spout and wrist blade handles, Suffix -CSG.
3. Centerset with spout, Suffix -CSS.

### GUIDE SPECIFICATION

Provide and install Acorn Dura-Ware 20" wide Rectangular Lavatory (specify model number and options). Fixture shall be fabricated from 16 gage, type 304 stainless steel. Construction shall be seamless welded. Exterior shall have a #4 satin finish. Lavatory deck shall have an integral air-circulating, self-draining soap dish. Installation shall be made in accordance with manufacturers recommendations and details. Installer shall provide all wall mounting hardware to include concealed arm carrier. **Vandal Resistance Details:**



# Dura-Ware® 1951LC : 20" Rectangular Lavatory

## WALL THICKNESS AND TYPE (Must Specify)

Thickness \_\_\_\_\_ Type:  Concrete  Block  Steel

## MODEL NUMBER AND OPTIONS SELECTION:

### BASE MODEL NUMBER

1951LC 20" x 18" Rectangular Lavatory

### FIXTURE MOUNTING AND WASTE (Must Specify)

-1 Off-Floor, Wall Outlet

### CONTROL TYPE (One Selection Below Required)

-9 Less Valve/Faucet by Others  
(Must Specify Deck Punching)

### CENTERSET FAUCET

(Includes -H24 Deck Punching provided as standard)

-CSG Faucet, Gooseneck Spout, Wrist Blade Handles  
 -CSS Centerset Faucet with Spout

### VALVE SELECTION (Pushbutton & Deck Mounted Spout)

-03 Air-Control, Single Temp, Non-Metering  
 -03-M Air-Control, Single Temp, Metering  
 -04 Air-Control, H & C, Non-Metering  
 -04-M Air-Control, H & C, Metering  
 -MH Metering, Hot Side Only (-04 Valve Only)  
 -MVC1 Time-Trol - Single Temp  
 -MVC2 Time-Trol - Hot & Cold  
 -PPZ1 Programmable Piezo Button - Single Temp  
 -PPZ2 Programmable Piezo Button - Hot & Cold

### SPOUT (Required with Valve Selection Above)

-DMS Deck Mounted Spout

### DECK PUNCHING - Required for -9 Valve Control

(1-5/16" diameter holes provided standard)

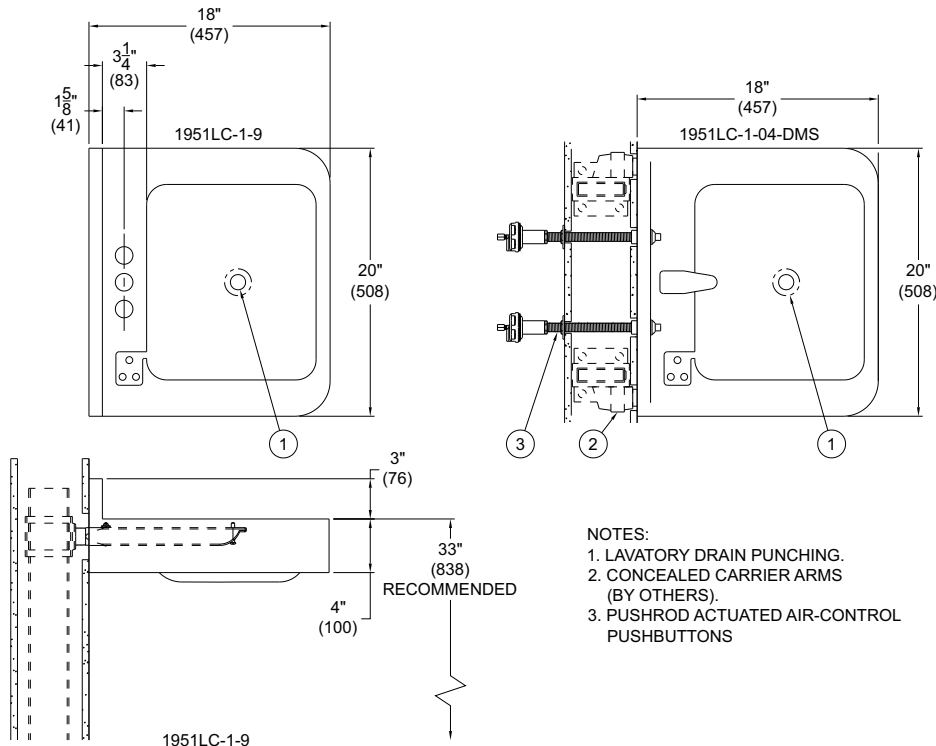
-H1 Single Hole, on Center  
 -H24 4" Centerset; Two Holes  
 -H34 4" Centerset; Three Holes  
 -H28 8" Centerset; Two Holes\*  
 -H38 8" Centerset; Three Holes\*

\*Eliminates soap dish depression when selected.

### PRODUCT OPTIONS (Must Specify)

-AB Angle Braces  
 -BRS Brass Body Valve  
 -EE Elbow Enclosure  
 -EG Enviro-Glaze Color, Specify: \_\_\_\_\_  
 -FG 14 Gage Housing  
 -GE Grid Strainer w/Close Elbow 1-1/4"  
 -GT Grid Strainer w/Tailpiece 1-1/4"  
 -IS Integral Shelf  
 -OF Lavatory Overflow  
 -TE Trap Enclosure  
 -TF Transformer, 120VAC to 24VAC (-MVC Only)  
 -TPT Tubular P-Trap 1-1/4" x 1-1/2"

Please visit [www.acorneng.com](http://www.acorneng.com)  
for most current specifications.



**WARNING:** Cancer and Reproductive Harm - [www.P65Warnings.ca.gov](http://www.P65Warnings.ca.gov)

<p><b>Important:</b> Installation instructions and current rough-in are furnished with each fixture. Do not rough in without certified dimensions. Dimensions are subject to manufacturer's tolerance of plus or minus 1/4" and change without notice. Acorn assumes no responsibility for use of void or superseded data. © Copyright 2009 Acorn Engineering Company</p>	
<p>Selection Summary</p> <p>Model No. &amp; Option _____</p> <p>Quantity _____</p>	<p>Approved for Manufacturing</p> <p>Company _____ Title _____</p> <p>Signature _____ Date _____</p>