



Dura-Ware® 2803-1

Recessed Wall Box with Flush Valve for Remote Mounting



2803-1

Graphic May Show Some Available Options

Please visit www.acorneng.com for most current specifications.

Recessed Wall Box for Remote Flush Valve

Acorn Recessed Wall Box with Flush Valve is intended for remote flushing and provides easy access to the pre-installed, concealed Flush Valve when an accessible pipe chase is not available and vandal resistance is a concern. The unit is ideal for use with the 1699 Detox Toilet.

Note: The 2803-1 unit is not intended for installation directly behind a rear supply Toilet to provide Flush Valve access. Refer to Acorn model 2898 Flush Valve Access Panel for use with rear spud Toilets when there is an appropriate furred wall (pipe space) for Flush Valve and plumbing connections.

Flush Valve is exposed type with cast bronze body. Flush Valve features quiet operation and includes non-hold open metal Pushbutton, Union Angle Stop and code approved Vacuum Breaker. All exposed parts are polished chrome plated.

Wall Box is 16 gage, type 304 stainless steel with interior having a glass blast satin finish. It is furnished with four removable Wall Brackets secured with vandal resistant Screws. Bottom of Box is provided with a special watertight connection that rotates to provide rear or either side discharge.

Box Cover is 14 gage, type 304 stainless steel with exposed surfaces having a satin finish. Cover is provided with hole for Flush Valve Pushbutton and is secured to Box with four 1/4"-20 UNC stainless steel vandal resistant Screws.

GUIDE SPECIFICATION

Provide and install an Acorn #2803-1 Recessed Wall Box with Flush Valve for remote installation. Box shall be fabricated from 16 gage, type 304 stainless steel with 14 gage Box Cover. All exposed stainless steel surfaces shall have a satin finish. Flush Valve shall be Pushbutton operated with Box Cover secured with stainless steel vandal resistant fasteners. Mounting hardware and piping between Flush Valve and fixture shall be by others.

Dura-Ware® 2803-1: Recessed Wall Box and Flush Valve for Remote Mounting



MODEL AND OPTIONS SELECTION

BASE MODEL NUMBER

- 2803-1 Recessed Remote Wall Box with Flush Valve

VALVE SELECTION (Must Specify)

- EVSFV Master-Trol® Electronic Flush Valve
- EVSPFV Master-Trol® Electronic Flush Valve w/ Piezo Button
- FV Flush Valve (Pushbutton Centered Only)
- FVH Hydraulic Flush Valve
- MTPFV Master-Trol® PLUS Electronic Flush Valve
- MTPPFV Master-Trol® PLUS Electronic Flush Valve w/ Piezo Button
- MVCFV Time-Trol® Electronic Flush Valve

TOILET FLUSH VALVE GPF'S (Must Specify)

- 1.28 GPF (HET)
- 1.6 GPF (Not Available in California)
- 3.5 GPF (Not Available in California)

TOILET FLUSH VALVE PUSHBUTTON LOCATION

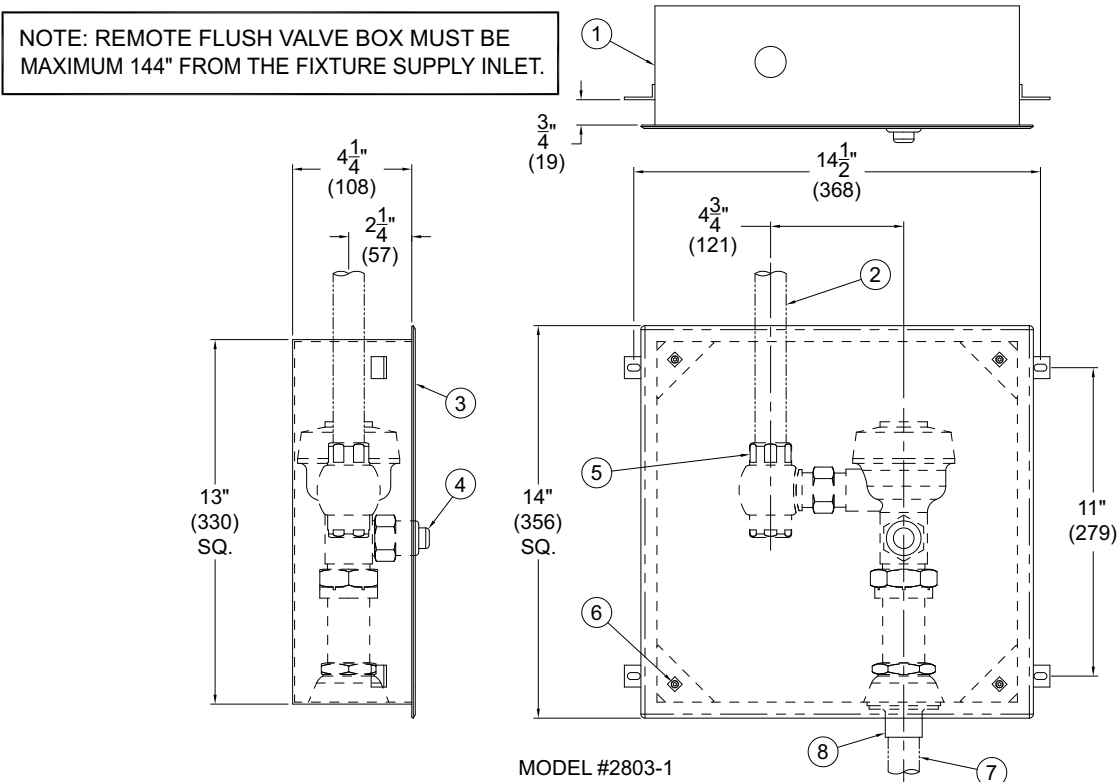
- LH Left Hand
- RH Right Hand

PRODUCT OPTIONS

- EG Enviro-Glaze, Specify Color: _____
- TF Transformer, 120VAC to 24VAC
- PBH Hemispherical Pushbutton (Electronic Valves Only)

Note: The 2803-1 unit is not intended for installation directly behind a rear supply Toilet to provide Flush Valve access. Refer to Acorn model 2898 Flush Valve Access Panel for use with rear spud Toilets.

Please visit www.acorneng.com for most current specifications.



- | | |
|---|---|
| <ol style="list-style-type: none"> 1. Box With Wall Brackets 2. Supply Piping By Others 3. Removable Access Panel 4. Pushbutton | <ol style="list-style-type: none"> 5. 1" NPT Supply Connection 6. Vandal Resistant Screws - 4 Places 7. Outlet Tubing to supply Remote Fixture is by Others 8. 1" NCT Fitting |
|---|---|

WARNING: Cancer and Reproductive Harm - www.P65Warnings.ca.gov

Important: Installation instructions and current rough-in are furnished with each fixture. Do not rough in without certified dimensions. Dimensions are subject to manufacturer's tolerance of plus or minus 1/4" and change without notice. Acorn assumes no responsibility for use of void or superseded data. © Copyright 2007 Acorn Engineering Company

<p style="text-align: center;">Selection Summary</p> <p>Model No. & Option _____</p> <p>Quantity _____</p>	<p style="text-align: center;">Approved for Manufacturing</p> <p>Company _____ Title _____</p> <p>Signature _____ Date _____</p>
--	--