



Replace-Ware® 3310 Series Retrofit Blowout Jet Toilet



3310

Fixture May Show Some Available Options

Please visit www.acorneng.com for most current specifications

Retrofit Blowout Jet Toilet

Fixture is for Retrofitting by welding a 1.28 GPF toilet bowl assembly onto existing combination fixtures. New toilet bowl reduces flush volume from 5.0 GPF or 3.5 GPF toilet to 1.28 GPF. New bowl can be field or factory welded onto existing comby fixture by removing existing comby from wall, cutting out bowl, waste and flushing inlet components. Fixture mounting flange and toilet bowl are fabricated of 14 gage, type 304 stainless steel. Exterior is polished to a satin finish. The inside of the toilet bowl also has a satin finish. Fixture is factory or field welded.

Toilet is a blowout jet type with an elongated bowl manufactured to ASME A112.19.3 and CSA B45.4 requirements and will flush with a minimum of 25 PSI flow pressure when used in conjunction with a minimum of 1.28 GPF. Toilet p-trap has a minimum of 3-1/2" seal and will pass a 2-1/8" ball. Toilet waste outlet is 2-3/8" diameter plain end extending 3" beyond the back of the unit.

Regularly Furnished with replacement bowl, patch panel, flushing inlet connection, waste extension and reinforcement channels.

GUIDE SPECIFICATION

Provide and install Acorn Replace-Ware Retrofit Blowout Jet Toilet (specify model number and options). Toilet bowl shall be fabricated from 14 gage, type 304 stainless steel. Fixture shall be factory or field welded and exposed surfaces shall be factory or field polished to a satin finish. Toilet shall be concealed blowout jet type with an elongated bowl, a self-draining flushing rim, and an integral contoured seat. Toilet shall meet ASME A112.19.3 and CSA B45.4 requirements and will flush with a minimum of 25 PSI flow pressure when used in conjunction with a minimum of 1.28 GPF. Toilet p-trap shall have a minimum 3-1/2" seal that shall pass a 2-1/8" diameter ball and be fully enclosed. Fixture shall withstand loadings of 1,500 pounds without permanent damage. Fixture shall be furnished with necessary fasteners for proper installation.

Replace-Ware® 3310: Retrofit Blowout Jet Toilet



WALL THICKNESS AND TYPE (Must Specify)

Thickness: _____ Type: Concrete Block Steel

MODEL NUMBER AND OPTIONS SELECTION:

BASE MODEL NUMBER

-3310 Retrofit Blowout Jet Toilet

EXISTING COMBINATION FIXTURE (Must Specify)

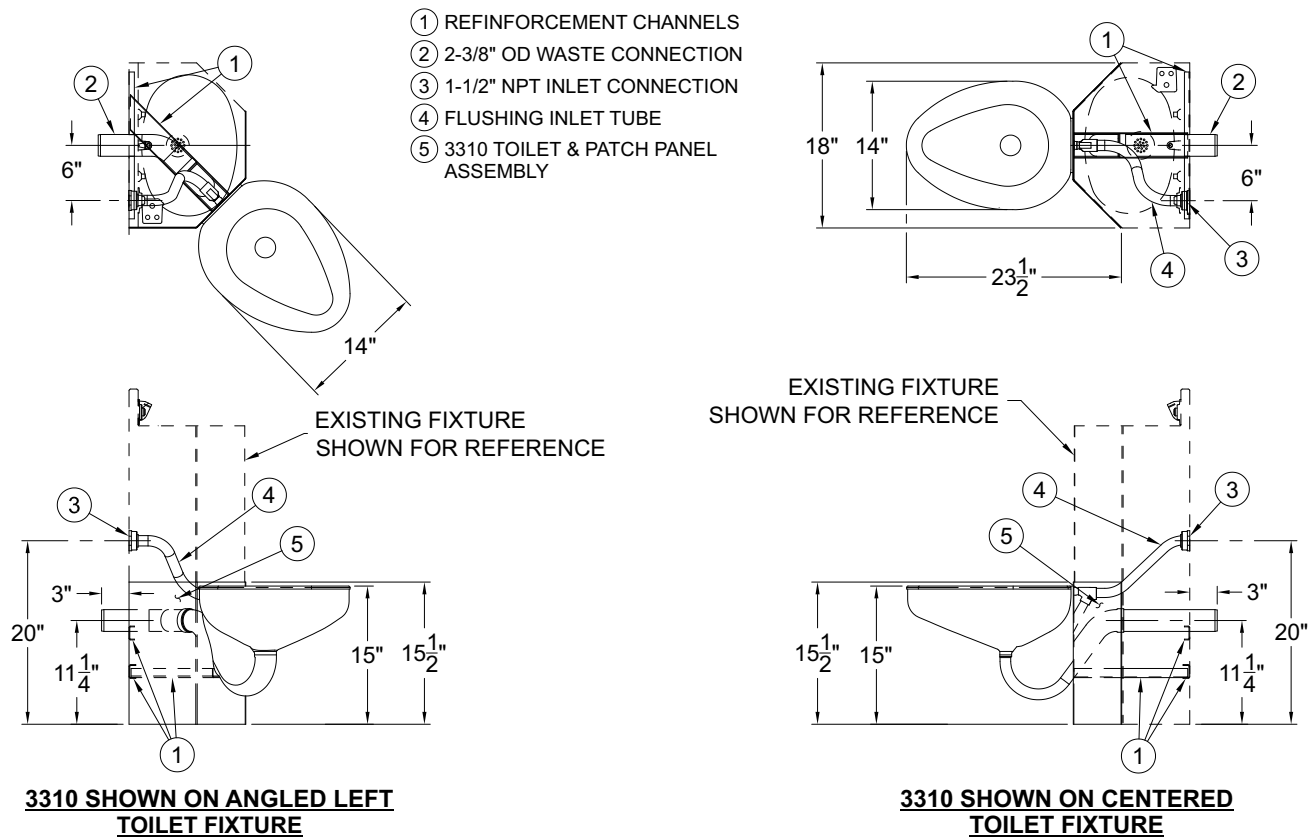
FLUSH VALVE GPFs (Must Specify)

-HEF 1.28 GPF
 -ULF 1.6 GPF

PRODUCT OPTIONS

-FT Flood-Trol (Manual Reset)
 -FTA Flood-Trol Auto-reset
 -FTE Flood-Trol Electronic
 -FVO Flush Valve Opposite In Lieu of Standard Location
 -FVT Flush Valve Thru Wall Connector
 -GW Gasketed Toilet Waste
 -HPS High Polished Integral Seat #7 Finish
 -TSC Toilet Shipping Cover
 -TWE Toilet Waste Extension (3" Standard)
 Specify Length Beyond Fixture: _____
 -WO3B 3" Bell Waste Outlet w/ Std. 2-3/8" Trap
 (1.6 or 3.5 GPF)

Please visit www.acorneng.com for most current specifications.



WARNING: Cancer and Reproductive Harm - www.P65Warnings.ca.gov

<p>Important: Installation instructions and current rough-in are furnished with each fixture. Do not rough in without certified dimensions. Dimensions are subject to manufacturer's tolerance of plus or minus 1/4" and change without notice. Acorn assumes no responsibility for use of void or superseded data. © Copyright 2009 Acorn Engineering Company</p>	
<p style="text-align: center;">Selection Summary</p> <p>Model No. & Option _____</p> <p>Quantity _____</p>	<p style="text-align: center;">Approved for Manufacturing</p> <p>Company _____ Title _____</p> <p>Signature _____ Date _____</p>