



Shower-Ware® 450BADA Series Apex Surface Mounted Showers - ADA Compliant*



CONTROLS
INSIDE

- Patented D697,591
- D Acorn Engineering Co. Fixture May Show Some Available Options

458BADA-W (Shown with 1108-3)

Please visit www.acorneng.com for most current specifications.

Apex Surface Mounted Showers - ADA Compliant*

Shower includes an ADA compliant Control Valve with a Patented Ligature Resistant ADA Compliant Tri-Lever Handle (Standard with T/P Valve only), Lever Handle or Pushbutton, a Quick-Disconnect Handheld Shower with On/Off Pushbutton, Vacuum Breaker and Flow Control, and a Surface Mounted Soap Dish. Folding Seat and Grab Bar are not included. Unit conforms with ANSI, UFAS and ADA requirements for accessibility* (*Refer to disclaimer*).

***Disclaimer:** [ADA 609.3] Guideline Section and Figure reference indicate "The space between the Grab Bar and projecting objects above shall be 12 inches (305 mm) minimum." Whenever possible Acorn Engineering Company recommends installation of a Flush Mount Shower Housing design (410 Series) for compliance and assumes no responsibility for Surface Mount Shower Housings deemed as non-conforming.

Compliance is subject to the interpretation and requirements of the Local Code Authority.

Shower Housing is 18 gage, type 304 stainless steel with #4 satin finish. Top and bottom of Housing have 30° slope.

Reach. All Controls, Soap Dish, etc., must be 38" to 48" from the finished floor to be within reach of a seated bather.

Handheld Shower Spray includes Pushbutton for On/Off control with non-positive shutoff, 60" long Stainless Steel Hose, Quick-Disconnect, Vacuum Breaker and 1.5 GPM Flow Control. Shower Housing has one low Mounting Bracket and one high Mounting Bracket for using Handheld Shower as a Fixed Head in either position.

Valve Control may be selected with either Hot and Cold Mixing Valve or Single Temperature Metering Pushbutton [ADA 309.4, CBC 11B-309.4]. Valve assembly includes Pressure Rated Flexible Supply Hose Connectors to assist with install.

- Type 8** Thermostatic/Pressure Balancing H&C Mixing Valve is ASSE 1016 compliant to compensate for fluctuation in temperature and pressure. Includes patented ligature resistant Tri-Lever Handle (-LVR Lever Handle is optional).
- Type 6** Air-Control Single Temp Pushbutton Metering Valve, non-hold open design. Timing from 5 to 60 seconds.
- Type 0** Electronic Single Temp Pushbutton Metering Valve styles provide an array of timing and programming options. Refer to individual Electronic Valve submittal sheets for specific data.

Fasteners. Acorn furnishes all exposed tamper-resistant fasteners necessary to complete the on-site shower assembly; however, concealed wall fasteners or Anchor Shields are not furnished.

GUIDE SPECIFICATION

Provide and install Acorn Apex Surface Mounted, ADA Compliant Wall Shower with Hi-Lo Mounting Brackets (specify model number and options). Shower Housing shall be fabricated from 18 gage, type 304 stainless steel and shall have a #4 satin finish. Housing Top and Bottom shall have a 30° slope. Exposed trim shall be chrome-plated brass. Fixture shall be furnished with an ADA compliant Control Valve with a Patented Ligature Resistant ADA Compliant Tri-Lever Handle, Lever Handle or Pushbutton, Quick-Disconnect Handheld Shower with On/Off Pushbutton, Vacuum Breaker and 1.5 GPM Flow Control, valve supply flexible Hose connectors and a surface mounted Soap Dish. Units to conform with ANSI, UFAS and ADA requirements for accessibility.

Shower-Ware®: 450BADA Apex Surface Mounted Showers - ADA Compliant



MODEL NUMBER AND OPTIONS SELECTION

SERIES

4 Apex

TYPE

-5 Surface Mounted ADA Shower

VALVE SELECTION (Must Specify)

- 0 Electronic Valves, Single Temp. Metering (Must Specify Type Where Indicated Below)
- 6 Air-Control, Single Temperature Metering
- 8 T/P Temperature-Pressure Balancing Mixing Valve With Patented Ligature Resistant ADA Tri-Lever Handle (ASSE 1016 Compliant)

SUPPLY (Must Specify)

- T Top
- W Wall

ELECTRONIC VALVE SELECTION

Master-Trol (Electronic)

- EVS1 Single Temp
- EVSP1 Single Temp, Piezo Button

Master-Trol PLUS (Electronic)

- MTP1 Single Temp
- MTPP1 Single Temp, Piezo Button

Time-Trol (Electronic)

- MVC1 Single Temp

Programmable (Electronic) w/9VDC Plug-In Transformer

- PPZ1 Single Temp Programmable Piezo Button

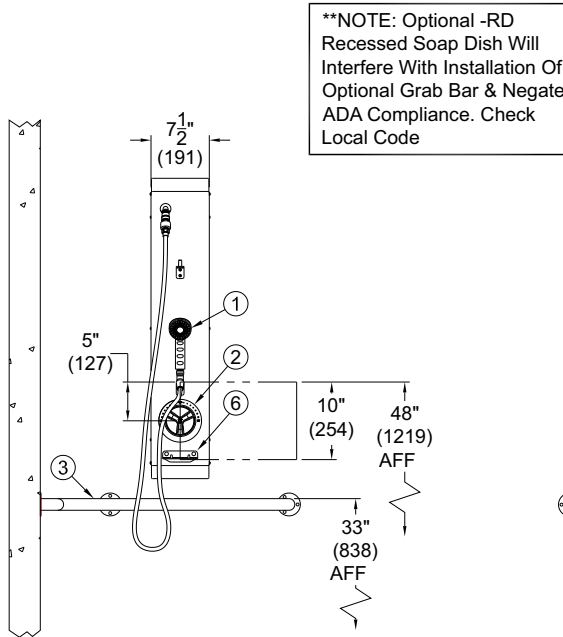
VALVE OPTIONS

- CI Cycle Interrupt for Time-Trol Valves
- LVR Lever Handle (-8 Valve Only)
- PBH Hemispherical Pushbutton (-6 Valve or -MV)
- TF Transformer, 120VAC to 24VAC (-MVC option only)

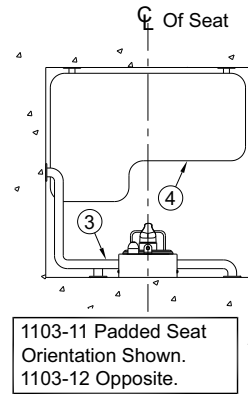
PRODUCT OPTIONS

- BS Built-in Liquid Soap System (Not ADA Compliant)
- EG Enviro-Glaze Color, Specify _____
- PSO Positive Shut-Off for Handshower Quick-Disconnect
- RD Recessed Soap Dish (May conflict with Certain ADA requirements)
- SC Supply Cover, Ceiling Height _____

Please visit www.acorneng.com for most current specifications.



MODEL# 458BADA-W w/ 1108-3



1. Handheld Shower with 60" Hose
2. T/P Valve w/ Standard Patented Tri-Lever Handle
3. 1108-3 Two-Wall Grab Bar, Shown For Reference Only
4. 1103-11 Padded Seat, Left Hand Orientation Shown For Reference
5. 30° Sloping Top and Bottom
6. Surface Mounted Soap Dish Provided Standard

VALVE TYPE	DIM "A"
-0, Electronic, S/T	4 1/2" (114)
-8, T/P Mixing Valve	3" (76)
-6, Air-Control, S/T	4" (102)

WARNING: Cancer and Reproductive Harm - www.P65Warnings.ca.gov

<p>Important: Installation instructions and current rough-in are furnished with each fixture. Do not rough in without certified dimensions. Dimensions are subject to manufacturer's tolerance of plus or minus 1/4" and change without notice. Acorn assumes no responsibility for use of void or superseded data. © Copyright 2008 Acorn Engineering Company</p>	
<p style="text-align: center;">Selection Summary</p> <p>Model No. & Option _____</p> <p>Quantity _____</p>	<p style="text-align: center;">Approved for Manufacturing</p> <p>Company _____ Title _____</p> <p>Signature _____ Date _____</p>