



Valves: MVC-BAT Series

Battery Powered Time-Trol Plus Valve Selection



-MVC1-BAT

Graphic May Show Some Available Options

Please visit www.acorneng.com for most current specifications.

Battery Powered Time-Trol Plus Valve Selection

Valve Suffix Option -MVC-BAT, Battery Powered Modular Valve Controller is for use where electricity is not available and it provides an Acorn Time-Trol Plus System for water metering through precise electronic control of the solenoid valve provided.

The Time-Trol System uses a pneumatic actuator requiring less than 5 pounds of push on the fixture pushbutton to activate the timing cycle. The pneumatic actuator tube easily attaches to the Modular Valve Controller.

9 Volt Battery Powered Time-Trol Plus Controller has a plastic housing with a compartment for a rectangular 9 Volt battery. Battery to be supplied by others. Factory tests have provided over 90,000 operation cycles with a standard alkaline battery. Controller rotating adjustment knob selects valve metering length and lockout time. Valve metering time has eleven settings between 4 seconds and 7 minutes. Lockout time has twelve settings between 0 seconds and 1.5 hours. Controller is to be located within 10 feet of activating pushbutton. Controller supplied with 3 feet of wiring for connection to solenoid control valve. Should installer increase length of 14 ga wiring, battery cycle life will decrease approximately 5% for every additional 10 feet.

Cycle Interruption is a standard feature that enables the user to terminate the metering cycle after 5 seconds of valve "ON" time by simply pushing the fixture pushbutton again.

Status Indicator Light is provided on each Time-Trol Plus Modular Valve Controller. It is activated by pressing either the fixture pushbutton or the controller STATUS/SET button and displays one of the following conditions:

- | | |
|----------------------------|-------------------------------------|
| 1 Flash = Normal Status | 4 Flashes = Lockout Confirmed |
| 2 Flashes = Lockout Active | 5 Flashes = Valve Time Set To Off |
| | 6 Flashes = Start-Up Initialization |

NOTE: When the battery power gets low, the Status Indicator Light automatically starts flashing once every five seconds.

Specification with Column Showers requires that controllers be located remotely and solenoid valves must be positioned either: 1) above unit within optional -SC Supply Cover, 2) within a top valve cover, or 3) also located remotely.

GUIDE SPECIFICATION - Add to fixture specification following model number selected:

For Water Metering: Provide and install the Acorn 9 Volt Battery Powered Time-Trol Plus System Option -MVC-BAT, Modular Valve Controller. Battery provided by others. Provide a solenoid valve made with non-corrosive wet parts. Stainless steel fixture pushbutton shall be vandal-resistant and shall pneumatically actuate the Modular Valve Controller, with no electrical impulse at the pushbutton. Pushbutton shall require no more than 5 lbs. pressure to activate the system. Valve timing/lockout cycle shall have preset intervals easily adjustable with a knob. Time-Trol Plus Controller shall have status LED light to display system condition and permit easy trouble shooting.

Valves: MVC-BAT Series Battery Powered Time-Trol Plus Valve Selection



MODEL NUMBER AND OPTIONS SECTION

WATER METERING SHOWER-WARE SHOWERS

BASE MODEL NUMBERS (Must Specify)

100/400-MVC1-BAT Acme & Apex Shower Time-Trol Plus, Single Temperature

Valve: Remote Within Unit

Controller: Remote Within Unit

600/700-MVC1-BAT Classic & Capital Column Shower Time-Trol Plus, Single Temperature

Valve: Remote Above Unit

Controller Must Be Remote.

Product Options

-BRS Brass Valve Body & Checkstop

WATER METERING COMBIES, LAVATORIES, DRINKING FOUNTAINS & SECURITY SHOWERS

BASE MODEL NUMBERS (Must Specify)

-MVC1-BAT Time-Trol Plus, Single Temperature (Drinking Fountains)

-MVC2-BAT Time-Trol Plus, Hot & Cold

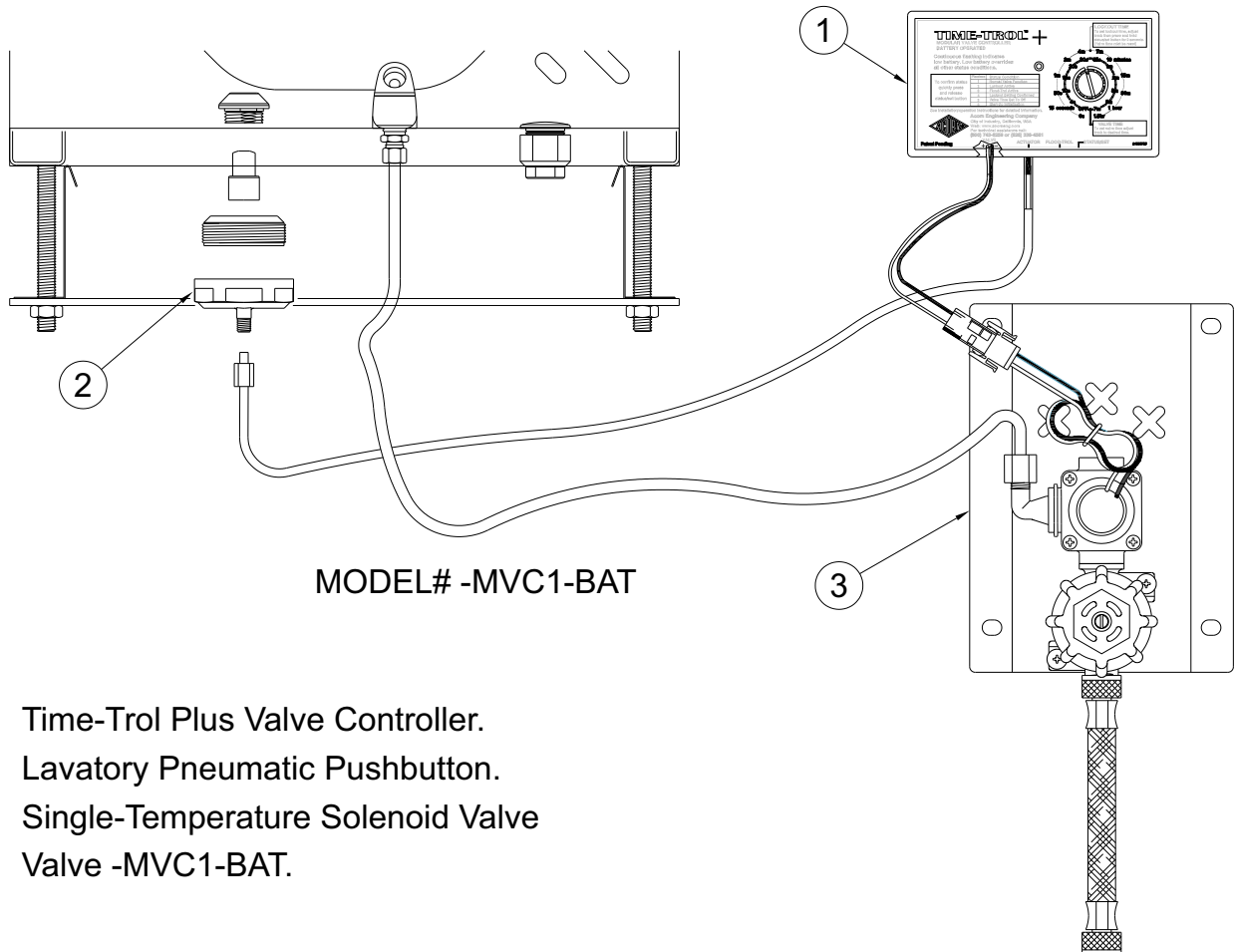
Product Options

-BRS Brass Valve Body & Checkstop

-MA Valve Manifold:

2 (Max. Showers) 3 4

Please visit www.acorneng.com for most current specifications.



1. Time-Trol Plus Valve Controller.
2. Lavatory Pneumatic Pushbutton.
3. Single-Temperature Solenoid Valve Valve -MVC1-BAT.

WARNING: Cancer and Reproductive Harm - www.P65Warnings.ca.gov

<p>Important: Installation instructions and current rough-in are furnished with each fixture. Do not rough in without certified dimensions. Dimensions are subject to manufacturer's tolerance of plus or minus 1/4" and change without notice. Acorn assumes no responsibility for use of void or superseded data. © Copyright 2007 Acorn Engineering Company</p>	
<p>Selection Summary</p> <p>Model No. & Option _____</p> <p>Quantity _____</p>	<p>Approved for Manufacturing</p> <p>Company _____ Title _____</p> <p>Signature _____ Date _____</p>