

Model S0000-AL3

Electric Alarm for Indoor Laboratory Application



SPECIFICATIONS:

Model S0000-AL3 is an indoor electric alarm with integral flashing amber light and horn. A flow switch activates the light and horn when the fixture is in use. The flow switch has DPDT double pole double throw contacts which allow for remote monitoring (by others). All other connecting assemblies are provided by others.

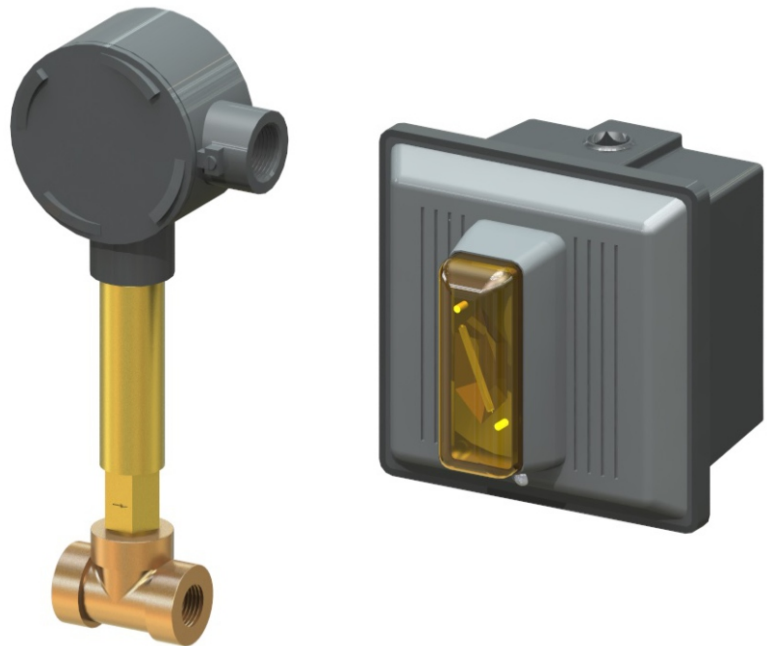
STANDARD EQUIPMENT:

Alarm: UL LISTED alarm provides a distinctive audible signal with the volume of 90 dB at 10 feet with an integral amber flashing light.

Flow Switch: Weatherproof, UL LISTED, DPDT double pole, double throw switch. Switch is rated at 125/250 VAC; 5 amp. 1-1/4" NPT flow switch Tee includes 1" NPT reducing adapter.

Mounting: The included hanger plate is required for both flush and surface mounted type applications. Flush mounting requires an electrical J-box with extension provided by others. The alarm box is intended for surface mounting.

Model: S0000-AL3-FLW2



S0000-AL3-FLW2 Shown

OPTIONAL ACCESSORIES:

Additional costs may be incurred

- ASW NEMA type 4X, Audible Alarm Silencing Switch
- FLW2 1/2" NPT, Flow Switch, (w/ 3/8" NPT Reducing Adapter)



Member of
U.S. Green
Building Council



Recyclable
Product

Acorn Safety assumes no responsibility for use of void or superseded data. © Copyright Acorn Safety®, City of Industry, CA, Division of Acorn Engineering Company®, Member of Morris Group International™. Please visit www.acorneng.com for most current specifications.

Submittal # **S0000-AL3**
[ACC] Date: 08/30/17

Product complies to the following standards:

Test rating conditions are compliant to ANSI Z358.1



Division of
Acorn Engineering Company®,
Member of
Morris Group International™

ACORN SAFETY

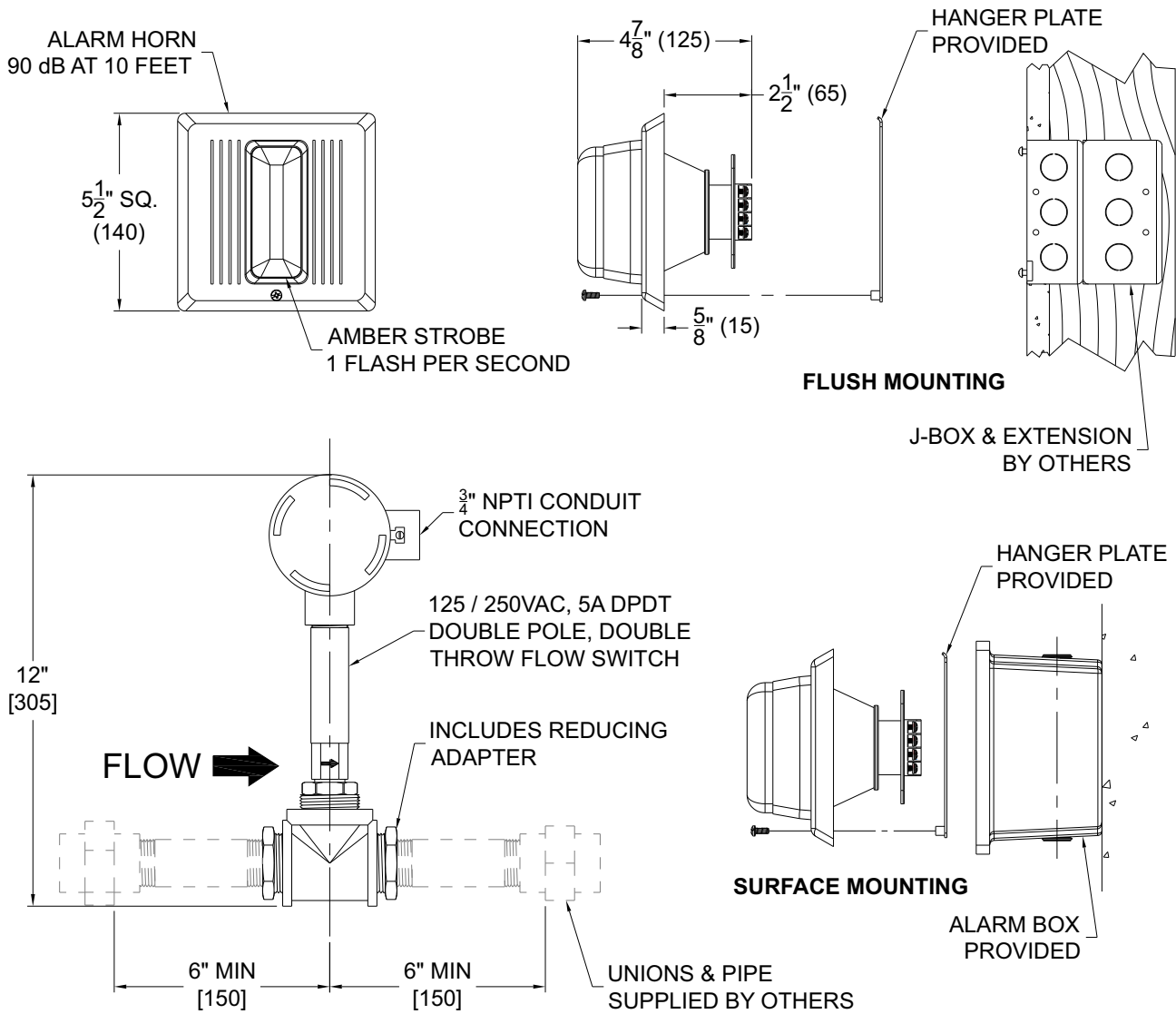
P.O. Box 3527
City of Industry, CA
91744 U.S.A.
Phone 800-591-9372
626-855-4804

www.acorneng.com

TECHNICAL DIMENSIONS

All dimensions are subject to manufacturer's tolerance of plus or minus 1/8" nominal and subject to change without notice. Acorn Safety® assumes no responsibility for use of void or superseded data. Dimensions may change with the addition of optional accessories. © Acorn Safety®, A Division of Acorn Engineering Company®, Member of Morris Group International™. Please visit www.acorneng.com for most current specifications.

☐ **Model S0000-AL3** : Electric Alarm for Indoor
Flush or Surface Mount Laboratory Application



GENERAL NOTES:

1. ALL DIMENSIONS ARE IN INCHES [MM].
2. FLOW SWITCH SHALL BE INSTALLED VERTICALLY WITH HORIZONTAL FLOW.
3. DIRECTION OF WATER FLOW MUST BE IN SAME DIRECTION AS SHOWN ON FLOW SWITCH.
4. J-BOX AND J-BOX EXTENSION BY OTHERS.

⚠ WARNING: Cancer and Reproductive Harm - www.P65Warnings.ca.gov

S0000-AL3 Date: 08/30/17

Acorn Safety warrants that its products are free from defects in material or workmanship under normal use and service for a period of one year from date of shipment. Acorn's liability under this warranty shall be discharged solely by replacement or repair of defective material, provided Acorn is notified in writing within one year from date of shipment, F.O.B. Industry, California.

SELECTION SUMMARY & APPROVAL FOR MANUFACTURING

Model Number & Options _____ Quantity _____

Company _____

Contact _____ Title _____

Signature (Approval for Manufacturing) _____ Date _____



800-591-9372
or 626-855-4804
www.acorneng.com