



## Terrazzo-Ware® Shower Base - Institutional Series



SBIS-36-RAB

Fixture May Show Some Available Options

Please visit [www.acorneng.com](http://www.acorneng.com) for most current specifications.

### Institutional Shower Base

**Shower Base** is an attractive, easy to maintain, spacious shower receptacle. It is designed for durability and ease of installation. **ACORN Terrazzo-Ware®** precast shower bases are available in square, rectangular, and neo-corner models. Also available is a double receptacle within a single fixture where each receptacle of this twin unit has its own drain (specify -DD option). **ACORN** provides flexibility in configuration and size as required by the design of the building and the specific installation. Custom sizes and colors are also available.

**Shoulders** are 6" high, 3" wide and sloped to provide drainage. They may be optionally ordered with 1" rabbets on any side (must specify configuration) to install wall panels such as tempered glass or marble walls by others. Sides of base intended to be positioned against walls must be provided with a tiling flange; specify configuration. Free-standing sides intended to be used with tempered glass or wall panels will not require a tiling flange. Specified tiling flange is galvanized steel and extends above the shoulders at least an inch.

**Construction** is one-piece, precast terrazzo composed of marble chips cast in Portland cement to provide a compressive strength of at least 3,000 PSI seven days after casting. The shower base surface is provided with slip-resistant bathing surface and sealed for years of service.

**Integral Drain** is supplied with a removable, stainless steel grid strainer and provides for an inside caulk connection to a 2" pipe. The shower base has coved corners and is sloped to the drain outlet to provide positive drainage. A back outlet drain and a vandal resistant strainer are optionally available. Back outlet drain provides a female NPT drain connection.

**Compliance Standards:** Terrazzo Shower Bases have Third Party Certification of conformance with CSA B45.8/IAPMO Z403 Terrazzo, Concrete and Natural Stone Plumbing Fixtures which includes specific provision for Slip Resistance (Section 4.4.4) and Referenced Standard ASTM F462 Standard Consumer Safety Specification for Slip-Resistant Bathing Facilities.

### GUIDE SPECIFICATION

Provide and install an **ACORN Institutional Shower Base** (specify model number and options). Shower Base shall be made of precast terrazzo to produce a compressive strength of at least 3,000 PSI seven days after casting. Base shall be provided with slip-resistant bathing surface and sealed. No air holes or pits shall be allowed on the finished surface. Base shall have coved corners and be sloped to the drain outlet for positive drainage. Integral drain shall have a stainless steel strainer and provide for an inside caulk connection to a 2" pipe. The manufacturer will provide to the installer the necessary installation instructions.



# Terrazzo-Ware®: Shower Base-Institutional Series

## BASE MODEL & TYPE

- ☐ **SBIS-36-BOD** 36" Terrazzo Institutional Square Shower Base, Back Outlet Drain
- ☐ **SBIC-36** 36" Terrazzo Institutional Corner Shower Base
- ☐ **SBIR-7236** 72" x 36" Rectangular Terrazzo Shower Base
- ☐ **SBIR-7236-DD** 72" x 36" Rectangular Terrazzo Shower Base, Double Drain
- ☐ **SBIS-36** 36" Terrazzo Institutional Square Shower Base

## SUFFIX OPTIONS

- ☐ -OCT Optional Colors  
<https://www.acorneng.com/terrazzo-colors>
- ☐ -RAB Rabbet Joint Shoulders (Contact Factory)
- ☐ -VRS Vandal Resistant Strainer

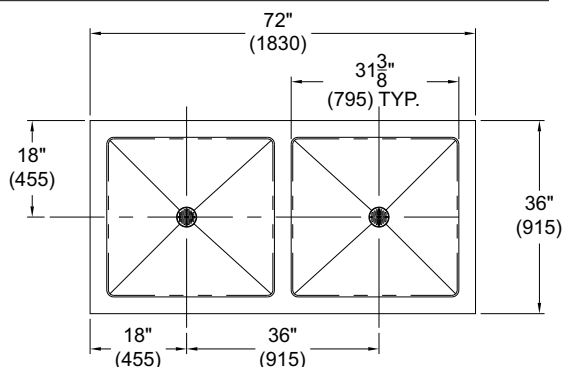
## Tiling Flanges

- ☐ -1F One Flanged Side
  - ☐ -Long Side
  - ☐ -Short Side
- ☐ -2F Two Flanged Sides
  - ☐ -Long Side & Left Side
  - ☐ -Long Side & Right Side
- ☐ -3F Three Flanged Sides
  - ☐ -Long Side, Right & Left Side
  - ☐ -Short Side, Left and Right Long Sides
- ☐ -FF Fully Flanged Sides

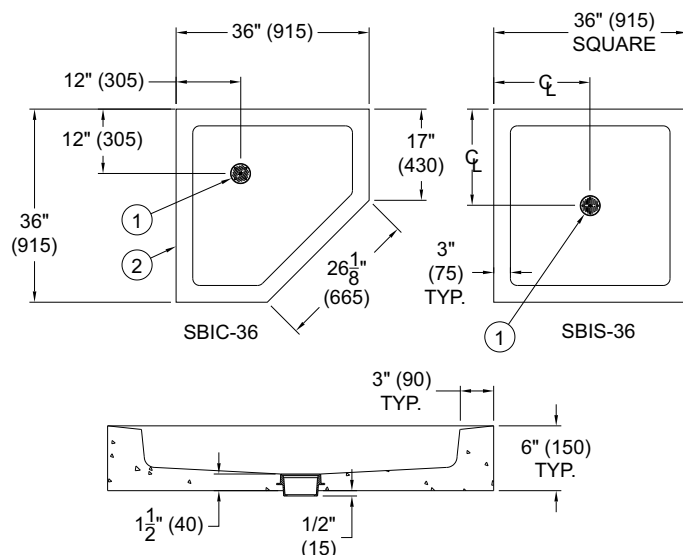
## ACCESSORIES

- ☐ KDG2 Rubber Drain Gasket for 2" Waste Pipe

Please visit [www.acorneng.com](https://www.acorneng.com) for most current specifications.

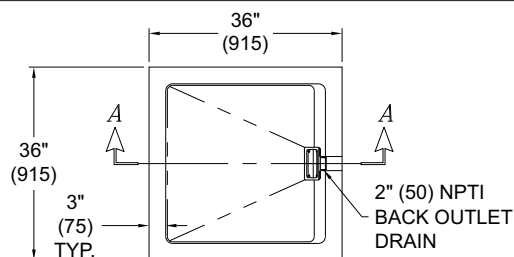


SBIR-7236-DD

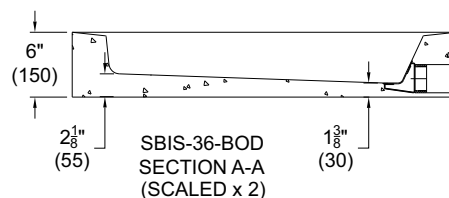


SBIC-36

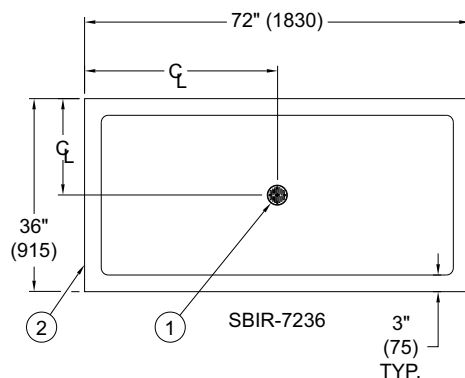
SBIS-36



SBIS-36-BOD



SBIS-36-BOD  
SECTION A-A  
(SCALED x 2)



SBIR-7236

## TERRAZZO-WARE INSTITUTIONAL SERIES SHOWER BASE

### NOTE:

1. Integral drain with removable grid strainer. Drain provides an inside caulk connection to 2" pipe

2. Shoulders are 3" wide and 6" high

**WARNING:** Cancer and Reproductive Harm - [www.P65Warnings.ca.gov](http://www.P65Warnings.ca.gov)

**Important:** Installation instructions and current rough-in are furnished with each fixture. Do not rough in without certified dimensions. Dimensions are subject to manufacturer's tolerance of plus or minus 1/4" and change without notice. Acorn assumes no responsibility for use of void or superseded data. © Copyright 2004 Acorn Engineering Company

<p style="text-align: center;">Selection Summary</p> <p>Model No. &amp; Option _____</p> <p>Quantity _____</p>	<p style="text-align: center;">Approved for Manufacturing</p> <p>Company _____ Title _____</p> <p>Signature _____ Date _____</p>
--	--