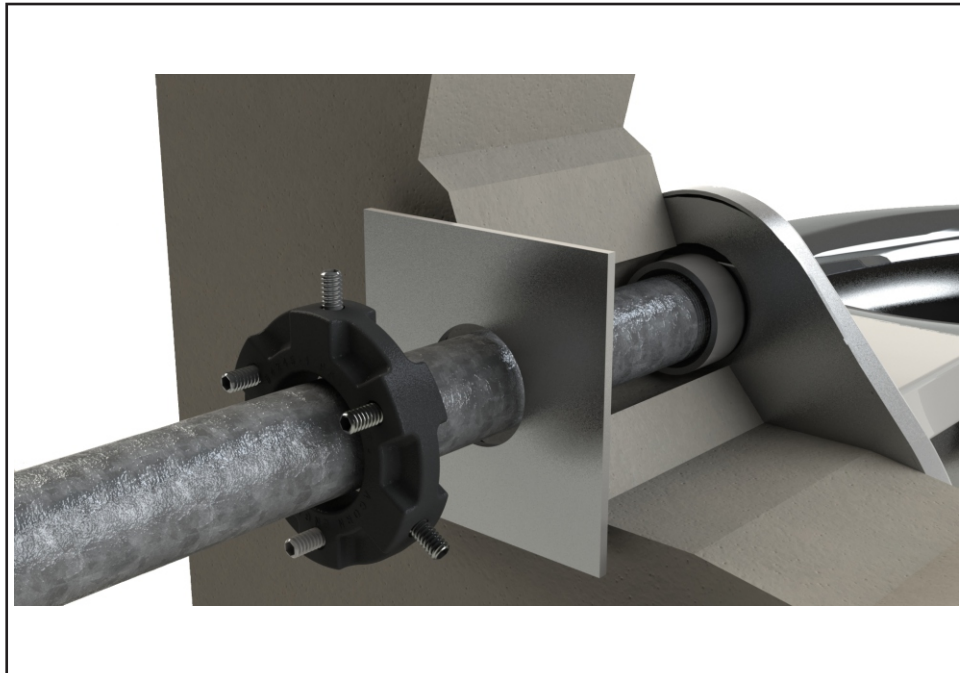




Option -3395



Anchoring Assembly -

This option uses a threaded anchoring pipe for applicable wall thickness, a thrust plate, and anchoring collar with locking adjustment screws to securely anchor the fixture to the wall on both flushing inlet fittings and lavy waste outlet fittings.

Please visit www.acorneng.com for most current specifications.

⚠ WARNING: Cancer and Reproductive Harm - www.P65Warnings.ca.gov

