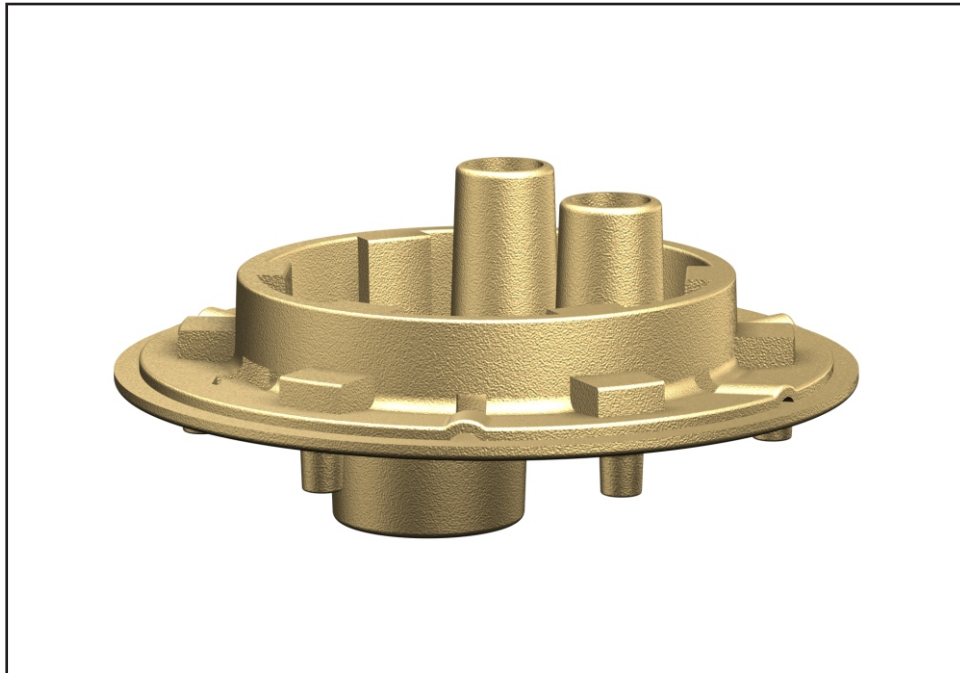




Option -B21



Shower Drain Base Bottom Supply -

Provides a cast iron shower mounting base and drain for use with 600 and 700 series column showers. Intended for vent off drain line installation, where the vent connection is on the drain line remote from the fixture drain fitting. Drain includes a 3" no-hub outlet connection and clamping collar. Column Shower fixture should be provided with drain opening punching at bottom of column. Optionally available with -IC 3" Inside Caulk Waste or -FO 4" No-hub Outlet.

Please visit www.acorneng.com for most current specifications.

⚠ WARNING: Cancer and Reproductive Harm - www.P65Warnings.ca.gov

