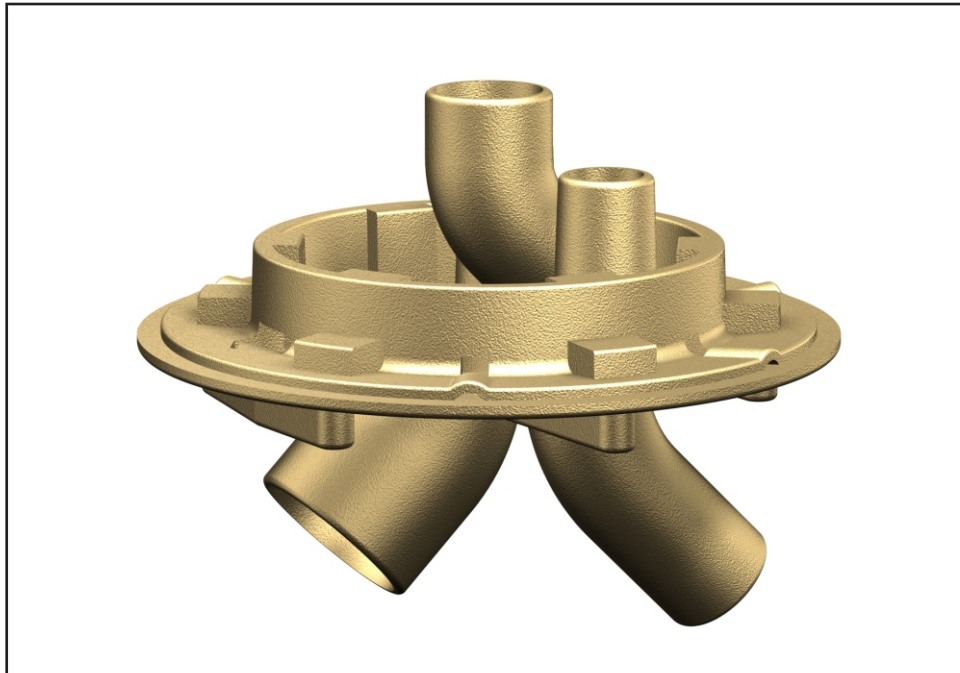




## Option -B25



### Shower Drain Base Bottom Supply for Center Vent -

Provides a cast iron shower mounting base and drain for use with 600 and 700 series column showers. Drain includes a 3" no-hub outlet connection, 2" IPS center vent pipe connection, clamping collar and supply inlet openings. Column Shower fixture should be provided with drain opening punching at bottom of column.

Please visit [www.acorneng.com](http://www.acorneng.com) for most current specifications.

⚠ WARNING: Cancer and Reproductive Harm - [www.P65Warnings.ca.gov](http://www.P65Warnings.ca.gov)

