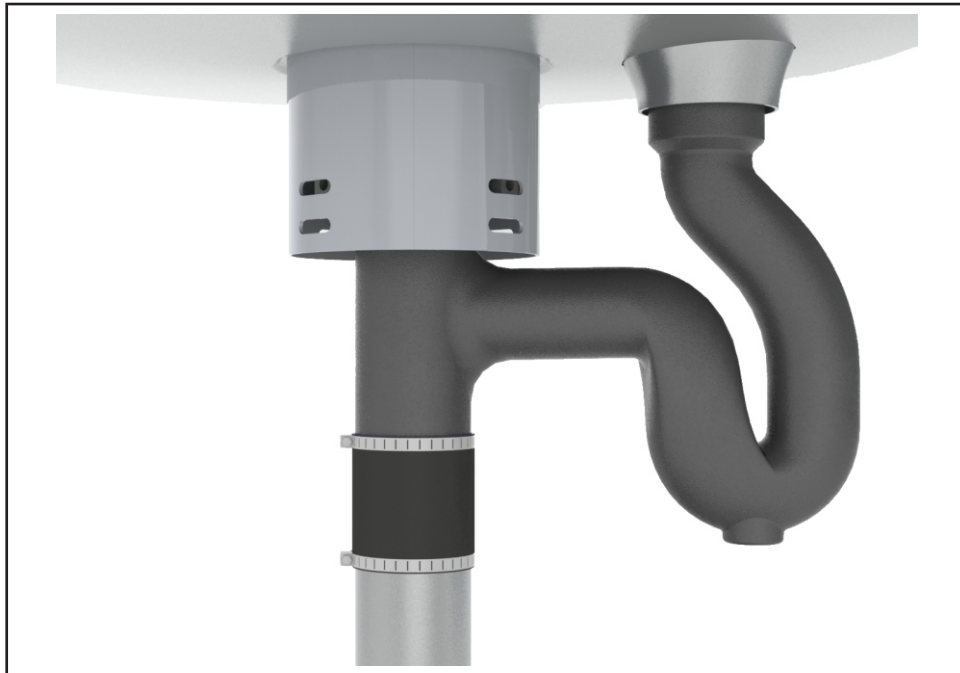




## Option -BT



### **Bottom Supply, Vent Thru Fixture -**

This specification allows for the water supply entering the fixture from the floor and the vent pipe running through the fixture, out the top of the sprayhead. For models with a floor outlet a 2" No-Hub w/ Integral P-trap is included. For a wall outlet fixture a grid strainer and an 1-1/2" tubular tailpiece is provided.

Please visit [www.acorneng.com](http://www.acorneng.com) for most current specifications.

 WARNING: Cancer and Reproductive Harm - [www.P65Warnings.ca.gov](http://www.P65Warnings.ca.gov)

