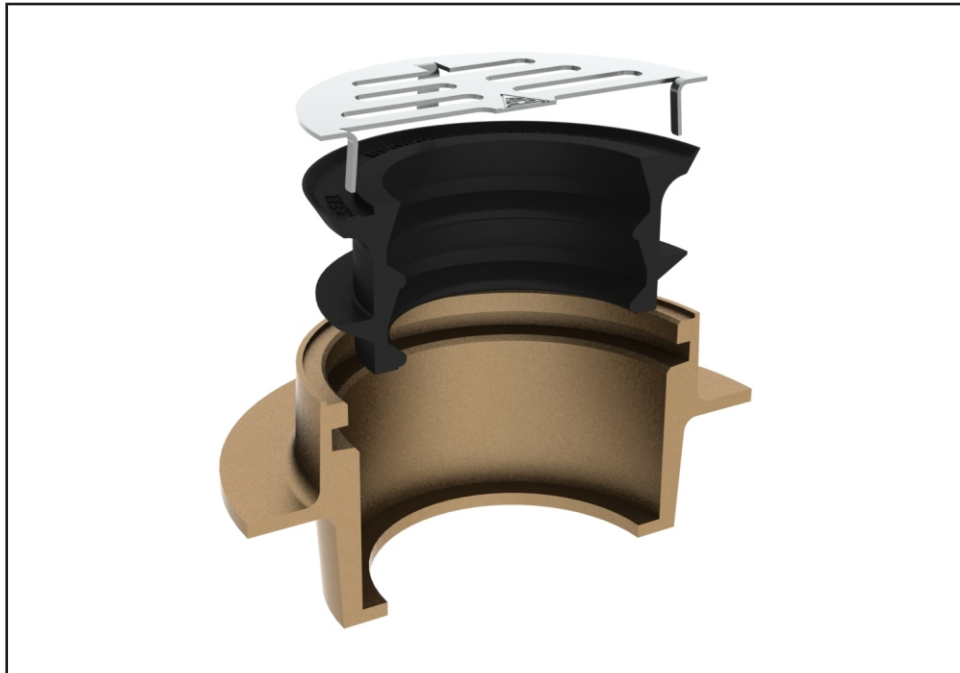




Option -KDG2



Drain Gasket 2" -

Compression sealing, flexible PVC donut shaped ring drain gasket provides simple, quick connection with inside caulk waste outlet on shower base to 2" drain DWV plastic, Sch. 40, steel or X.H. (extra-heavy) cast iron pipe. Requires no special tools gluing, threading or lead caulking.

Please visit www.acorneng.com for most current specifications.

⚠ WARNING: Cancer and Reproductive Harm - www.P65Warnings.ca.gov

