



## Option -SC Supply Cover

**-SC Supply Cover** provides a finished look for water supply drops from the ceiling and includes a heavy gauge type 304 stainless steel Shroud polished to a #4 satin finish. An Adjustment Section is provided for upper section to accommodate site variations. Refer to individual product Installation Instructions for complete details.

**Factory will determine appropriate length of -SC Shroud required when Ceiling Height and Shower head discharge height (when applicable) are provided.**

### **Wall Mount Shower Supply Cover**

This cover is used with top supply, Surface Mounted Wall Showers to hide supply piping from the ceiling to provide a finished look. Model 450B series units with the -SC option include a continuous vertical Housing which extends to 2" (101mm) of ceiling and includes an upper Adjustment Section to complete installation. Wide housing designs will include a separate Supply Cover sized to span from top of Shower Housing to ceiling. Vertical Housing with Supply Cover include Mounting Brackets to wall.

### **Column Shower Supply and Vent Cover**

This cover is used with top supply Column Showers to conceal supply and/or vent pipes to give a finished look to a shower installation and includes an upper and lower section which telescope to provide adjustment. All brackets and exposed fasteners are furnished, except fasteners for attaching Cover to the ceiling. Refer to optional -CA Ceiling Anchor Plate for use when -SC is used with dropped Ceiling designs.

### **Washfountain Supply and Vent Cover**

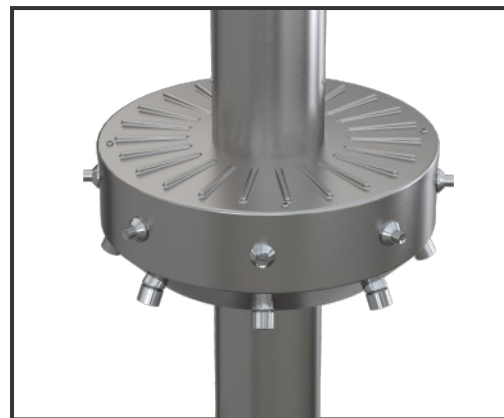
The stainless steel cover pictured conceals supply and/or vent pipes providing a finished appearance and includes an upper and lower section which telescope to provide adjustment.



**-SC Wall Mount Shower - 450B Shown**



**-SC Column Shower - 700 Series Shown**



**-SC Washfountain**

Please visit [www.acorneng.com](http://www.acorneng.com) for most current specifications.

**⚠ WARNING:** Cancer and Reproductive Harm - [www.P65Warnings.ca.gov](http://www.P65Warnings.ca.gov)

