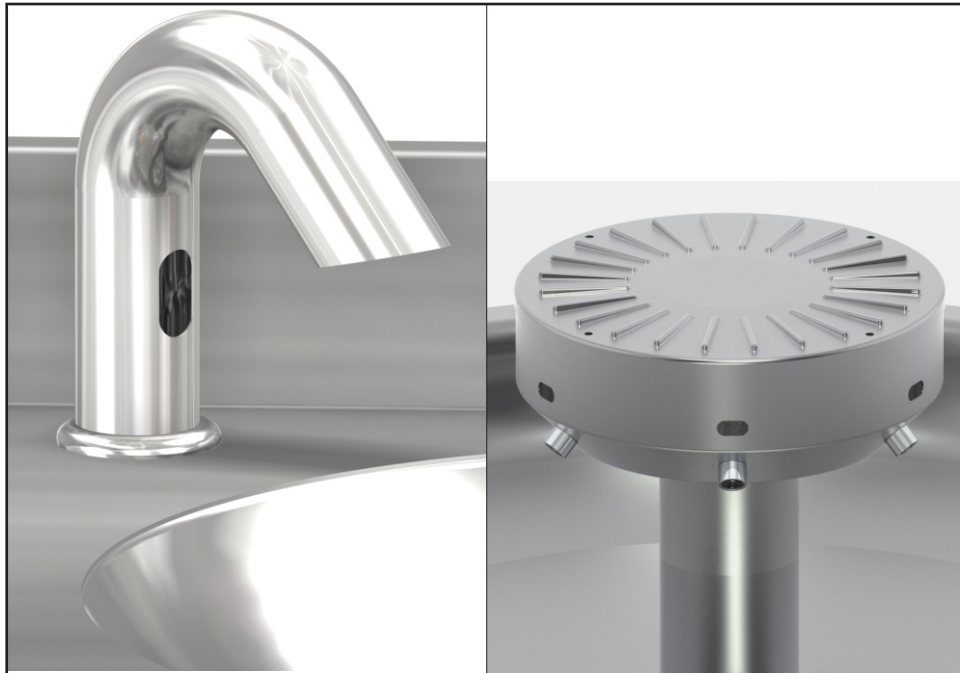




Option -SO



Sensor Operation -

Use of this option provides "Hands-Free" washing. It includes an infra-red sensor operated, solenoid water valve, mixing valve and a transformer.

A 24VAC sensor is used on our Wash-Ware and Scrub-Ware product lines whenever the -SO option is selected. This sensor operates with a 30 second metered flow or cycle once an object is detected before turning off the solenoid valve.

The 9VDC sensor is used on our Meridian fixtures or on our Wash-Ware only when the -SO-BAT option is selected. The sensor activates the solenoid valve whenever an object is detected in the range area. The sensor will keep the solenoid open, allowing water to flow until the object is removed from sensor range. If an object is positioned in a manner that it is under constant detection the sensor will turn off the solenoid after 30-90 seconds.

* Shown in the illustrations above are for specific models intended to display the infrared sensor. Your configuration will differ depending on model and options selected.

Please visit www.acorneng.com for most current specifications.

 WARNING: Cancer and Reproductive Harm - www.P65Warnings.ca.gov

