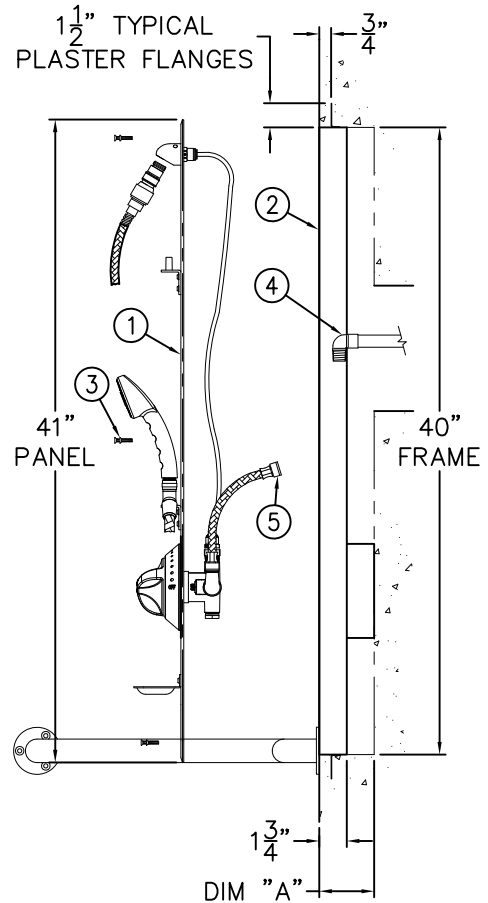
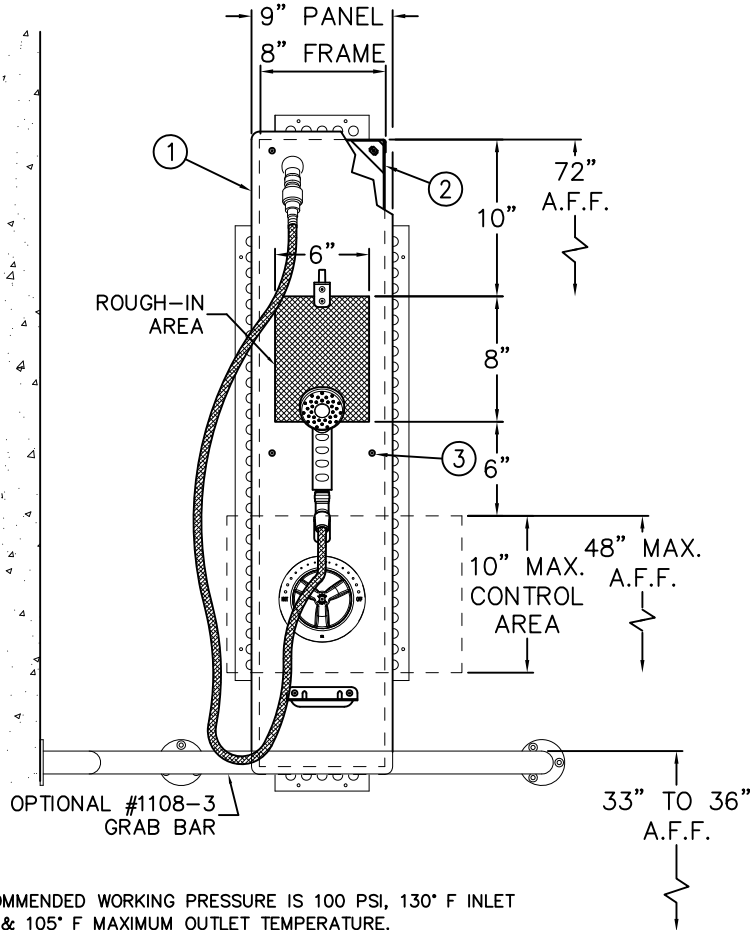




REFERENCE DRAWINGS			
SHOWER HEAD	9970-122-001	FLO-CLOZ	9975-000-001
HANDICAP SEAT	9900-350-001	VALVE BODY	9975-090-001
GLIDE RAIL	9970-103-001	VALVE CONNECTIONS	9905-006-001
FLEX SHOWERHEAD	9970-102-003	PUSHBUTTON/ESCUT	9957-300-001
T/P VALVE (SHOWN)	9975-005-002	T/P VALVE ADJUST	9900-007-001
T/P VALVES PRIOR TO JUNE 2014	9975-006-001		

REFER TO ACCESSIBILITY GUIDELINES FOR COMPLETE INSTALLATION REQUIREMENTS. THIS FIXTURE MEETS ADA ACCESSIBILITY GUIDELINES WHEN INSTALLED CORRECTLY.

VALVE DEPTH	
MODELS	DIM "A"
410	4 1/2"
416	
415	3"
418	



NOTE:
 MAXIMUM RECOMMENDED WORKING PRESSURE IS 100 PSI, 130° F INLET TEMPERATURE & 105° F MAXIMUM OUTLET TEMPERATURE.

INSTALLATION INSTRUCTIONS:

- A- DISASSEMBLE SHOWER PANEL ASSEMBLY ① FROM WALL MOUNTING FRAME ② BY REMOVING VANDAL RESISTANT SCREWS ③ FROM THE PANEL.
- B- INSTALL MOUNTING FRAME ②. FRAME TOP MUST BE AT 72" ABOVE FINISHED FLOOR WITH THE FLUSH WITH THE FINISHED WALL. REFERENCE DIMENSION 'A' FOR VALVE DEPTH BLOCKOUT.
- C- PROVIDE SUPPLY ROUGH-INS ④ IN THE AREA INDICATED. THOROUGHLY FLUSH SUPPLY LINES.

- D- MAKE UP SUPPLY CONNECTIONS TO 1/2" NPS ⑤ END INLETS WHILE SUPPORTING PANEL OFF THE FLOOR. NOTE: SUPPLY INLET CONNECTION WILL ACCOMMODATE A 1/2" NPT MALE ADAPTER.
- E- ASSEMBLE THE SHOWER PANEL ① TO THE MOUNTING FRAME ② USING SCREWS PROVIDED.

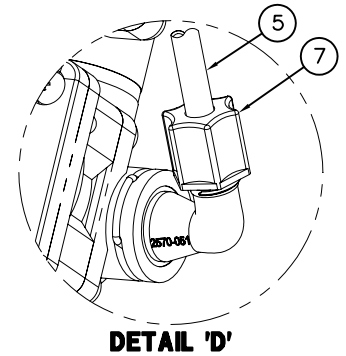
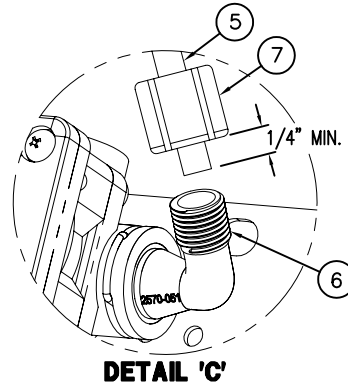
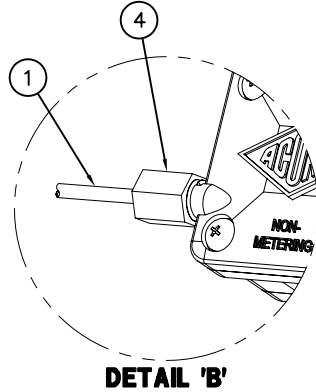
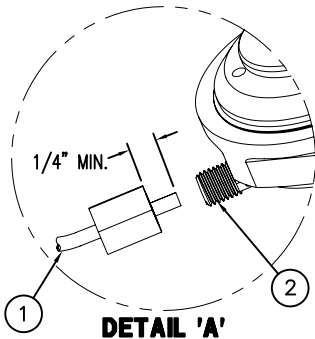
WARNING:

PRIOR TO COMPLETING INSTALLATION SUPPLY LINES MUST BE FLUSHED OF ALL FOREIGN MATERIAL SUCH AS PIPE DOPE, CHIPS SOLDER ETC. VALVE MUST BE DRAINED PRIOR TO BEING SUBJECTED TO FREEZING TEMPERATURES.

ACORN ENGINEERING COMPANY P.O. BOX 3527 Industry, CA 91744 15125 Proctor Ave Industry, CA 91746 (626) 336-4561 FAX (626) 961-2200	TITLE APEX FLUSH MOUNTED ADA SHOWER -CAT. 410B-ADA SERIES		
	MANUFACTURE DATE SEPTEMBER 2010 TO PRESENT	DATE ISSUED 10/28/10	DRAWING NUMBER 9900-033-002
	DATE REVISED 06/01/14 D		

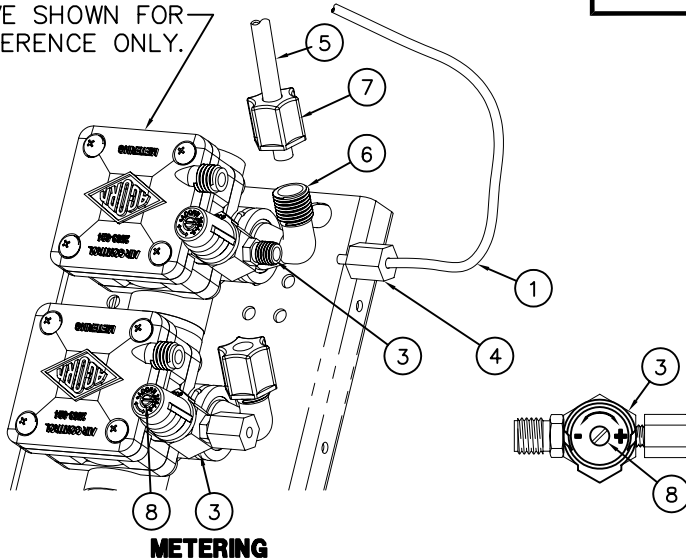


SIDE OUTLET SHOWN



NOTE: PENAL-WARE & ECO-RAIN SHOWER FIXTURES USE 1/4" O.D. RISER TUBING WHILE OTHER SHOWER-WARE FIXTURES USE 3/8" O.D. TUBING.

AIR-CONTROL 03M-MA2 VALVE SHOWN FOR REFERENCE ONLY.



REFERENCE DRAWINGS	
REPAIR PARTS	DRAWING
VALVE BODY	9955-006-003
CHECKSTOP	9956-040-003
PUSHBUTTON/ESCUTCHEON	9957-300-001
METERING SERVOMOTOR	9955-000-003

NOTE:

- ALL TUBING SHOULD BE CUT SQUARE AND BE FREE OF BURRS OR DEFORMITIES TO ENSURE A WATER TIGHT CONNECTION.
- EXTEND TUBING AT LEAST 1/4" BEYOND FERRULE NUT AND INSERT TUBING INTO CONNECTION OPENING BEFORE TIGHTENING.
- TUBING SHOULD BE FREE OF KINKS TO ENSURE PROPER OPERATION.
- MAXIMUM RECOMMENDED WORKING WATER PRESSURE IS 100 PSI; TEMPERATURE IS 130° F; OUTLET TEMPERATURE IS RECOMMENDED AT A MAXIMUM OF 105° F.

WARNING:

PRIOR TO MAKING INSTALLATION, SUPPLY LINES MUST BE FLUSHED OF ALL FOREIGN MATERIAL SUCH AS PIPE DOPE, CHIPS, SOLDER, ETC. VALVE MUST BE DRAINED PRIOR TO BEING SUBJECTED TO FREEZING TEMPERATURES. MAXIMUM RECOMMENDED OUTLET WATER TEMPERATURE IS 105° F.

TIMING IS ADJUSTABLE FROM 5 TO 60 SECONDS AND IS ACCOMPLISHED BY ROTATING TIMING SCREW (8). TURNING THE TIMING SCREW CLOCKWISE INCREASES METERING TIME WHILE TURNING THE SCREW COUNTERCLOCKWISE DECREASES METERING TIME.

INSTALLATION INSTRUCTIONS:

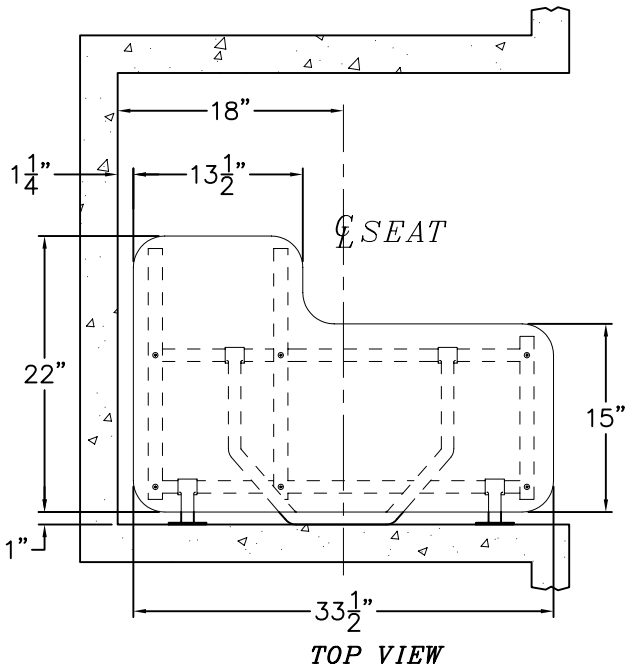
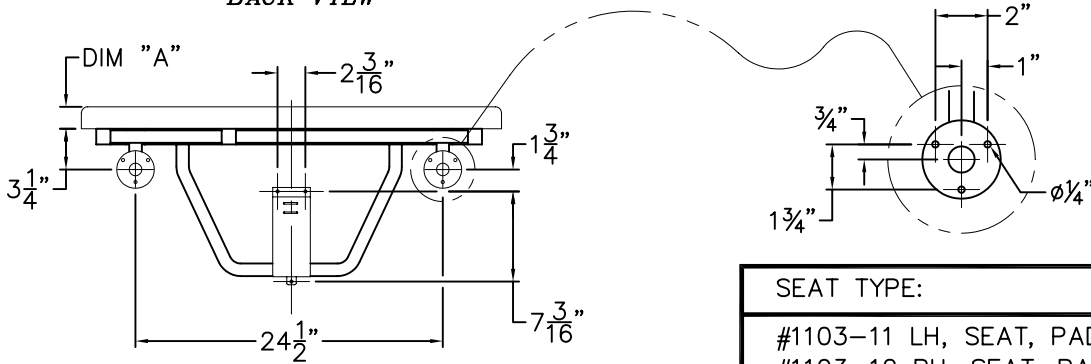
- A- MOUNT FIXTURE IN ACCORDANCE TO MANUFACTURER'S INSTALLATION INSTRUCTIONS.
- B- ASSEMBLE PUSHBUTTONS AND OR SHOWER NOZZLES TO FIXTURE IF REQUIRED.
- C- CONNECT 1/8" O.D. POLYETHYLENE AIR LINE (1) TO PUSHBUTTON (2) AND VALVE TIMER ASSEMBLY (3). SEE DETAILS 'A' & 'B'. HAND TIGHTEN FERRULE NUT (4) PROVIDED.

- D- CONNECT SHOWER RISER (5) TO VALVE ASSEMBLY ELBOW (6). SEE DETAIL 'C' AND 'D'. HAND TIGHTEN FERRULE NUT (7) PROVIDED.
- E- AFTER THOROUGHLY FLUSHING SUPPLY LINES, MAKE UP CONNECTIONS TO VALVE ASSEMBLY INLET(S) 1/2" NPT OR 1/2" NPS FLEX HOSE AS REQUIRED.

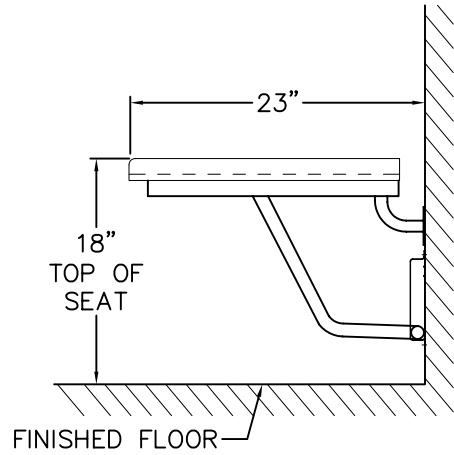
ACORN ENGINEERING COMPANY P.O. BOX 3527 INDUSTRY, CA. 91744 (626) 336-4561 FAX (626) 961-2200	TITLE HAND OPERATED, AIR-CONTROL VALVE SHOWER CONNECTIONS		
	MANUFACTURE DATE OCTOBER 2010 TO PRESENT	DATE ISSUED 10/28/10	DRAWING NUMBER 9900-006-003
		DATE REVISED	



BACK VIEW



SEAT TYPE:	DIM 'A'
#1103-11 LH, SEAT, PADDED #1103-12 RH, SEAT, PADDED	3/4"
#1103-21 LH, SEAT, PHENOLIC #1103-22 RH, SEAT, PHENOLIC	1/2"
#1103-31 LH, SEAT, SS #1103-32 RH, SEAT, RH	1/8"



REFERENCE DRAWING	
-RD REINFORCED PANEL	9900-351-001

INSTALLATION INSTRUCTIONS:

A- USING FOLDED SEAT FRAME AS A TEMPLATE MARK HOLES ON WALL OR REINFORCED PANEL FOR MOUNTING FLANGES AND SUPPORT LEG GUIDE BRACKET FOR WALL ANCHORS AND ANCHORING HARDWARE BY OTHERS. FOR -RP PANEL MOUNTING, #10 x 1" LONG STAINLESS STEEL PHILIPS HEAD SHEET METAL SCREWS ARE RECOMMENDED. FOR WALL MOUNTING, #10 x 2" LONG STAINLESS STEEL PHILIPS HEAD SHEET METAL SCREWS ARE RECOMMENDED.

- B- SEAT SHOULD BE MOUNTED ON CENTER WITH 34" WIDE ACORN -RP REINFORCED PANEL. REFER TO PANEL DETAIL WITH JOB INSTALLATION INSTRUCTIONS FOR CUSTOM PANEL SIZE INFORMATION.
- C- THE SEAT IS PROPERLY INSTALLED IF IT FOLDS UP AND DOWN FREELY, YET STAYS IN THE UP POSITION WITHOUT ASSISTANCE.

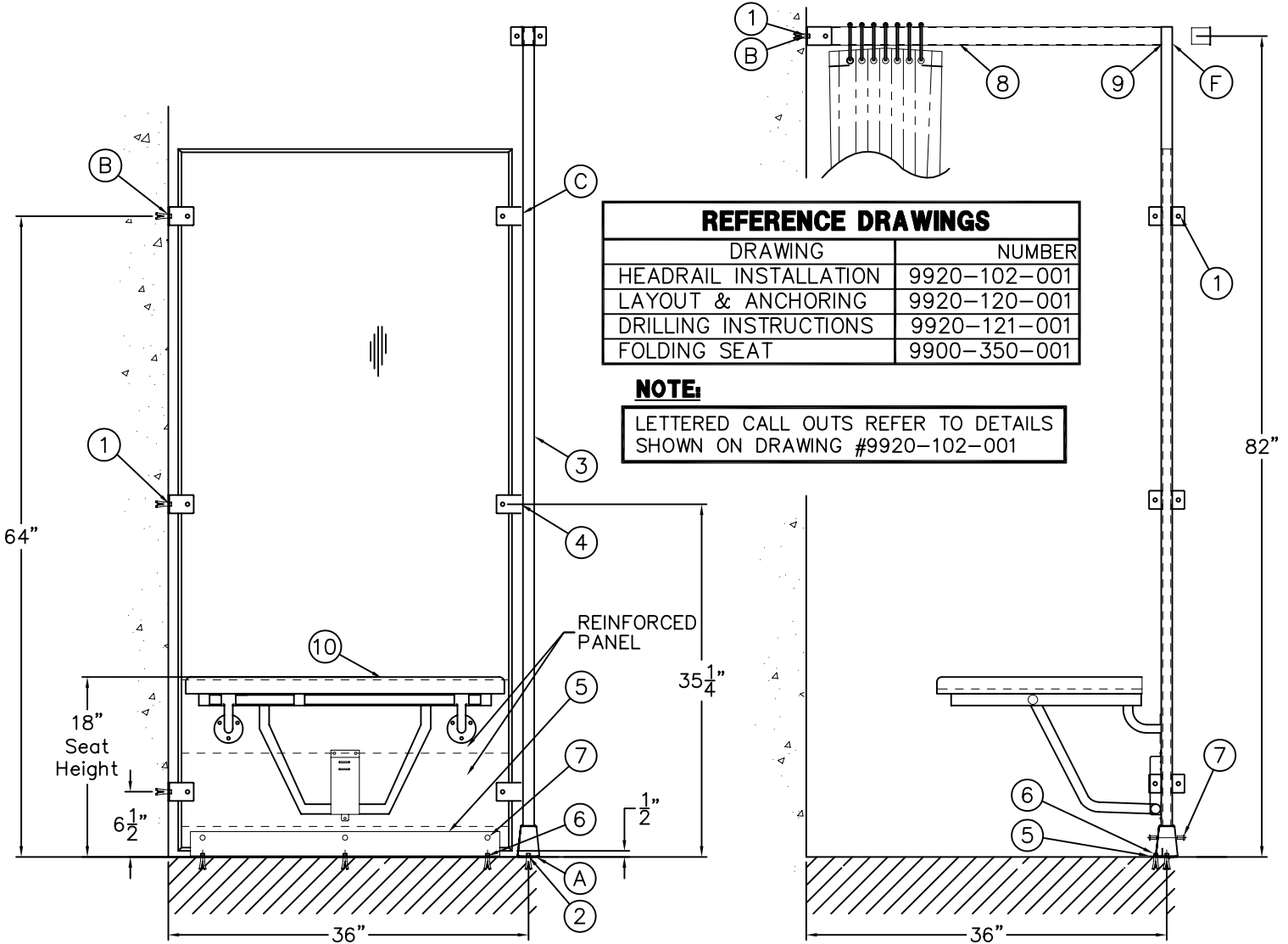
CONSULT APPLICABLE CODES FOR SEAT HEIGHT & LOCATION REQUIREMENTS. RECOMMENDED SEAT HEIGHT IS 18" ABOVE FINISHED FLOOR.

IMPORTANT: THIS SHOWER SEAT IS INTENDED TO MEET OR EXCEED CURRENT ADA CODE REQUIREMENTS. SEAT REQUIRES ADEQUATE IN-WALL, WALL BACKING OR OTHER SECURE METHOD OF ANCHORING.



ACORN ENGINEERING COMPANY
P.O. BOX 3527 INDUSTRY, CA. 91744
(626) 336-4561 FAX (626) 961-2200

TITLE		
FOLDING PADDED SEAT CATALOG * 1103 SERIES (A.D.A.)		
MANUFACTURE DATE	DATE ISSUED	DRAWING NUMBER
JANUARY 1, 1980	04/07/93	9900-350-001
TO PRESENT	DATE REVISED	
	09/13/10	



INSTALLATION INSTRUCTIONS:

- A- REVIEW SHOWER ROOM LAYOUT DRAWINGS IF REQUIRED. USE A CHALK LINE TO LOCATE AND MARK WALL BRACKETS AND POST CENTERLINES AS APPROPRIATE. INSTALL FLOOR AND WALL ANCHORS BEFORE ASSEMBLING COMPARTMENT.
- B- DRILL AND ANCHOR MOUNTING POINTS ON WALL FOR WALL BRACKETS (1) (FOR PANEL AND HEADRAIL), AND ON FLOOR FOR (2) CENTER OF POST. FLOOR ANCHOR PROVIDED FOR POST.
- C- DRILL MOUNTING HOLES TO POST (3) AND ASSEMBLE U-CLIPS (4) TO POST WITH HARDWARE PROVIDED.
- D- PROVIDE TEMPORARY PANEL SUPPORT 1/2" AFF AND DRILL MOUNTING HOLES IN PANEL. SECURE TO WALL BRACKETS (1) AND U-CLIPS (4) WITH HARDWARE PROVIDED.

- E- USE FLOOR ANGLE (5) AS A TEMPLATE TO LOCATE AND DRILL FLOOR AND PANEL FOR FLOOR ANCHORS (6) AND PANEL MOUNTING HOLES (7). INSTALL FLOOR ANCHORS, AND MOUNT FLOOR ANGLE TO FLOOR WITH INSTALLER PROVIDED ANCHORING HARDWARE (6) FOR .313" DIAMETER PUNCHING. SECURE PANEL TO FLOOR ANGLE WITH HARDWARE PROVIDED.
- F- FIT HEADRAIL WITH END CAP (8) IN WALL BRACKET (1), AND POST WITH END CAP (9), DRILL MOUNTING HOLES AND SECURE TO POST AND WALL BRACKET WITH HARDWARE PROVIDED.
- G- LOCATE SEAT (10) 18" AFF AND IN CENTER OF PANEL DRILL (9) MOUNTING HOLES AND INSTALL WITH HARDWARE PROVIDED.
- H- ALL WALL AND FLOOR ANCHORS AND ANCHORING HARDWARE ARE PROVIDED BY OTHERS, UNLESS OTHERWISE SPECIFIED.

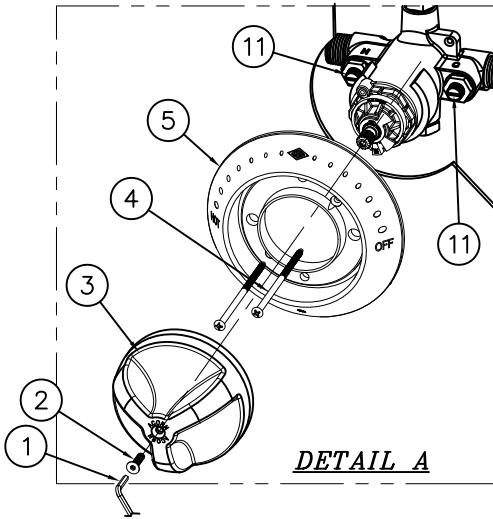


ACORN ENGINEERING COMPANY
P.O. BOX 3527 INDUSTRY, CA. 91744
(626) 336-4561 FAX (626) 961-2200

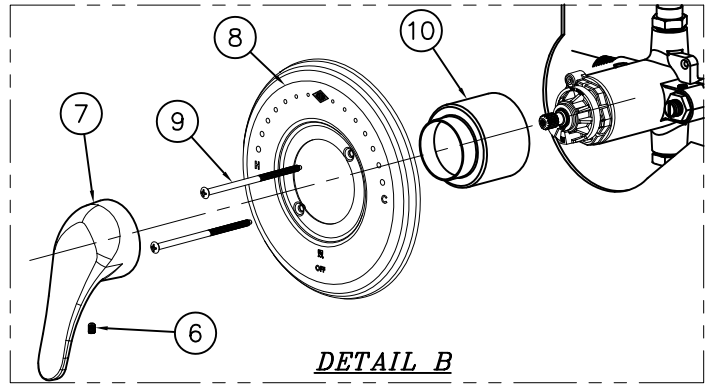
TITLE (ADA) SEAT MOUNTING ON REINFORCED (-RP) DIANA PANEL		
MANUFACTURE DATE JANUARY 1997 TO PRESENT	DATE ISSUED 05/07/10	DRAWING NUMBER 9900-351-002
	DATE REVISED	



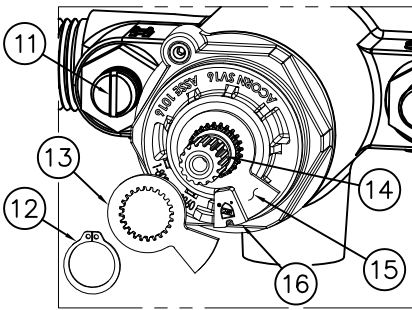
REFERENCE DRAWINGS	
ASSEMBLIES	NUMBER
T/P VALVE	9975-005-002



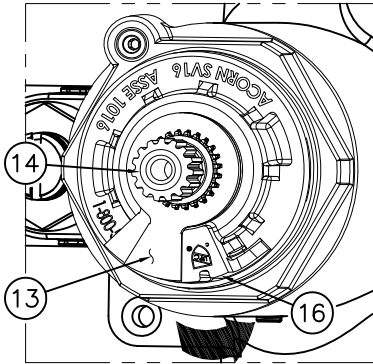
DETAIL A



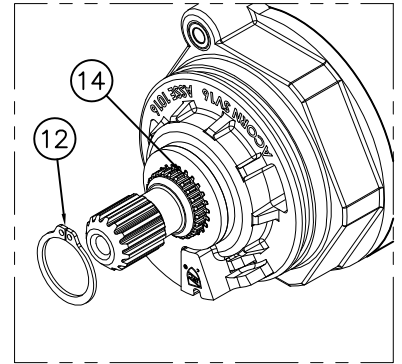
DETAIL B



DETAIL C



DETAIL D



DETAIL E

INSTRUCTIONS:

A-REMOVE TRI-LEVER HANDLE TRIM: SEE DETAIL A

a- USING CENTER REJECT ALLEN WRENCH (1) REMOVE HANDLE SCREW (2) AND REMOVE HANDLE (3).

b- REMOVE ESCUTCHEON (4) BY REMOVING SCREWS (5).

FOR OPTIONAL -LVR LEVER HANDLE TRIM: SEE DETAIL B

a- REMOVE SET SCREW (6) AND HANDLE (7).

b- REMOVE ESCUTCHEON (8) BY REMOVING SCREWS (9).

c- PULL OFF VALVE SLEEVE (10).

TEMPERATURE ADJUSTMENT:

B-ENSURE MAIN WATER SUPPLY IS ON.

C-ENSURE CHECK STOPS (11) ARE OPEN.

D-ENSURE VALVE IS IN THE OFF POSTION.

E-USING SNAP RING PLIERS REMOVE RETAINING RING (12) AND THE FIRST TEMPERATURE LIMIT WASHER (13) ONLY FROM VALVE STEM (14). SEE DETAIL C.

NOTE: IF SECOND TEMPERATURE LIMIT WASHER (15) COMES OFF, RESETTING OF THE OFF STOP MAY BE REQUIRED, KEY AS CLOSE AS POSSIBLE ON THE COUNTER-CLOCKWISE SIDE OF BONNET STOP (16). USING HANDLE (3) OR (7) SLIGHTLY OPEN AND CLOSE VALVE TO ENSURE WATER WILL SHUT OFF. DETAIL C.

TEMPERATURE ADJUSTMENT: CONTINUED:

F- USING HANDLE (3) OR (7) TURN VALVE STEM (14) COUNTER-CLOCKWISE TO INCREASE HOT, CHECKING OUTLET TEMPERATURE UNTIL DESIRED TEMPERATURE IS REACHED (RECOMMENDED 105° TO 110°). SLIDE FIRST TEMPERATURE LIMIT WASHER (9) OVER VALVE STEM (13) AND ENSURE SIDE OF WASHER RESTS AS CLOSE AS POSSIBLE TO CLOCKWISE SIDE OF BONNET LIMIT STOP (16). DETAIL D.

G- WITH VALVE IN THE "ON" POSTION AND WATER RUNNING, USING SNAP RING PLIERS INSTALL RETAINING RING (12). ENSURE RETAINING RING (12) IS INSERTED PROPERLY INTO GROOVE ON VALVE STEM (14). DETAIL E.

H- REINSTALL TRIM IN REVERSE ORDER.

<p>ACORN ENGINEERING COMPANY P.O. BOX 3527 Industry, CA 91744 15125 Proctor Ave Industry, CA 91746 (626) 336-4561 FAX (626) 961-2200</p>	<p>TITLE -8 T/P TEMP/PRESS BALANCING MIXING VALVE - TEMPERATURE ADJUSTMENT</p>		
	<p>MANUFACTURE DATE</p> <p>APRIL 2014</p> <p>PRESENT</p>	<p>DATE ISSUED</p> <p>05/01/14</p>	<p>DRAWING NUMBER</p> <p>9900-007-001</p>
		<p>DATE REVISED</p> <p>09/01/16 B</p>	