



Shower-Ware® 1103-10 Series

Folding Seats - ADA Compliant



1103-22

Fixture May Show Some Available Options

Please visit www.acorneng.com for most current specifications.

Folding Seats - ADA Compliant

Folding Seats are designed to meet the needs of the disabled. Seats fold effortlessly up against the wall or down into seating position as required. Frame is constructed of 1" type 304 stainless steel tubing polished to a satin finish. Seats conform with ANSI, UFAS and ADA requirements for accessibility. Compliance is subject to the interpretation and requirements of the local code authority. Installed loading requirements vary. Check local code for mounting height and provide adequate structural backing in wall. Folding seats are not recommended for installation in areas of high security.

Stainless Steel Seats are provided with a heavy gage type 304 stainless steel cover. Frame construction remains the same as standard.

Padded Seats consist of a 2" cushion covered with white Naugahyde and marine plywood backing.

Phenolic Seats are constructed of 1/2" x 3" water-resistant phenolic slats with teak finish. This practical design permits cleaning under body with minimum effort.

Shower-Ware®: 1103-10 Folding Seats - ADA Compliant



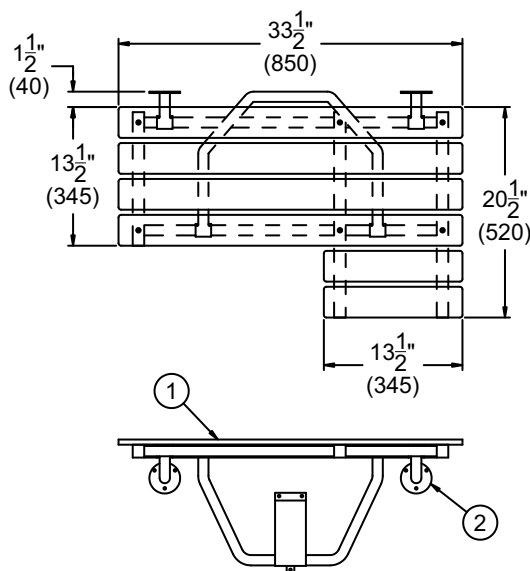
BASE MODEL NUMBER (Must Specify)

- 1103-11 Padded Seat, Left Hand
- 1103-12 Padded Seat, Right Hand
- 1103-21 Phenolic Seat, Left Hand
- 1103-22 Phenolic Seat, Right Hand
- 1103-31 Stainless Steel Seat, Left Hand
- 1103-32 Stainless Steel Seat, Right Hand

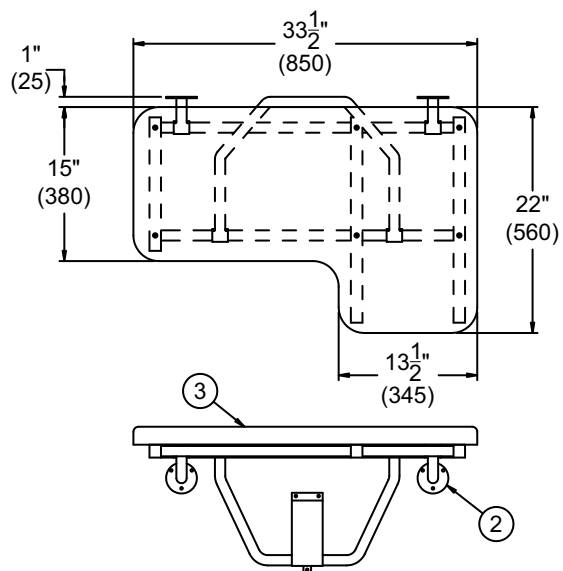
PRODUCT OPTIONS

- None

Please visit www.acorneng.com
for most current specifications.



MODEL #1103-22 RIGHT HAND SHOWN
#1103-21 LEFT HAND OPPOSITE



MODEL #1103-12 RIGHT HAND SHOWN
#1103-11 LEFT HAND OPPOSITE

NOTES:

1. PHENOLIC SLATES

2. MOUNTING FLANGES

3. PADDED SEAT

WARNING: Cancer and Reproductive Harm - www.P65Warnings.ca.gov

Important: Installation instructions and current rough-in are furnished with each fixture. Do not rough in without certified dimensions. Dimensions are subject to manufacturer's tolerance of plus or minus 1/4" and change without notice. Acorn assumes no responsibility for use of void or superseded data. © Copyright 2004 Acorn Engineering Company

<p style="text-align: center;">Selection Summary</p> <p>Model No. & Option _____</p> <p>Quantity _____</p>	<p style="text-align: center;">Approved for Manufacturing</p> <p>Company _____ Title _____</p> <p>Signature _____ Date _____</p>
----------------------------------------------------------------------------------------------------------------	----------------------------------------------------------------------------------------------------------------------------------