



## Shower-Ware® 110ADA Series

Acme Type 1 Wall Mounted Showers - ADA Compliant



- Patented D697,591
- © Acorn Engineering Co.

118ADA-L-W

Fixture May Show Some Available Options



CSH-WSA Showerhead is  
EPA WaterSense Certified

Please visit [www.acorneng.com](http://www.acorneng.com) for most current specifications.

### Acme Type 1 Wall Mounted Showers - ADA Compliant

**Shower.** A vertical Housing extension is provided to house the Valve assembly and Recessed Soap Dish at the appropriate ADA compliant height. Fixture is provided with an ADA Compliant Control Valve with a Patented Ligature Resistant ADA Compliant Tri-Lever Handle (Standard with T/P Valve only), Lever Handle or Pushbutton, a handheld Shower with On/Off Pushbutton, Vacuum Breaker and Flow Control, a Patented Ligature Resistant ADA Compliant Tri-Lever Handle (Standard with T/P Valve only) or Lever Handle Diverter Valve, a Recessed Soap Dish, a two-wall stainless steel Grab Bar and a 1103 series padded vinyl Folding Seat. Unit conforms with ANSI, UFAS and ADA requirements for accessibility. Compliance is subject to the interpretation and requirements of the local code authority. **Note: Not intended for use in California.**

**Housing** is 16 gage, type 304 stainless steel with satin finish.

**Supply Piping** is "L" copper Tubing and bronze or wrought copper fittings. Showerhead Riser and Valve supply inlet piping may differ. Piping is hydrostatically tested at 150 PSI.

**Reach.** All Controls, Soap Dish, etc., must be 38" to 48" from the finished floor to be within reach of a seated Bather with limited arm movement.

**Showerheads.** A Showerhead on a five foot stainless steel Hose (handheld Shower) is provided for seated Bathers. A conventional Showerhead is also provided and includes built-in 1.6 GPM Flow Restrictor.

**Valves.** Disabled Bathers should be provided with protection against sudden hot or cold "shock". T/P Valves such as our -8 are often required and are strongly recommended. Indicate Valve by selection of appropriate Shower-Ware® figure numbers.

**Seat and Privacy Compartments.** Disabled Bathers understandably should be given privacy while bathing. In addition, there is the requirement to provide a Seat opposite the Controls.

#### GUIDE SPECIFICATION

Provide and install an Acorn Acme ADA Compliant Wall Mounted Shower (specify model number and options). Vertical housing shall be fabricated from 16 gage, type 304 stainless steel and shall have a satin finish. Exposed trim shall be chrome-plated brass. Fixture shall be furnished with an ADA Compliant Control Valve with Patented Ligature Resistant ADA Compliant Tri-Lever Handle, Lever Handle or Pushbutton, a handheld Shower with On/Off Pushbutton, Vacuum Breaker and Flow Control, a Diverter Valve with a Patented Ligature Resistant ADA Compliant Tri-Lever Handle, a Recessed Soap Dish, a two-wall stainless steel Grab Bar and a padded vinyl Folding seat. Units to conform with ANSI, UFAS and ADA requirements for accessibility.

# Shower-Ware®: 110ADA Acme Type 1 Wall Mounted Showers - ADA Compliant



## Showerhead Discharge Height (Not Part of Model Number)

6'-0"  5'-6"  5'-0"  Other (Specify) \_\_\_\_\_

## MODEL NUMBER AND OPTIONS SELECTION

### SERIES (Must Specify)

1 Acme

### TYPE (Must Specify)

-1 Wall Showers

### VALVE SELECTION (Must Specify)

- 0 Electronic Valves, Single Temp Metering (Must Specify Type Where Indicated Below)
- 6 Air-Control, Single Temp Metering
- 8 T/P Temperature-Pressure Balancing Mixing Valve With Patented Ligature Resistant ADA Tri-Lever Lever Handle (ASSE 1016 Compliant)

### VALVE ORIENTATION (Must Specify)

-L Left  -R Right

### SUPPLY (Must Specify)

-T Top  
 -W Wall

### ELECTRONIC VALVE SELECTION

#### Master-Trol® (Electronic)

- EVS1 Single Temp
- EVSP1 Single Temp, Piezo Button

#### Master-Trol® PLUS (Electronic)

- MTP1 Single Temp
- MTPP1 Single Temp, Piezo Button

#### Time-Trol® (Electronic)

-MVC1 Single Temp

#### Programmable (Electronic) w/9VDC Plug-In Transformer

-PPZ1 Single Temp Programmable Piezo Button

### VALVE OPTIONS

- CI Cycle Interrupt for Time-Trol Valves (-MVC option only)
- LVR Lever Handle (-8 Valve)
- PBH Hemispherical Pushbutton (-6 Valve)
- TF Transformer, 120VAC to 24VAC (-MVC option only)

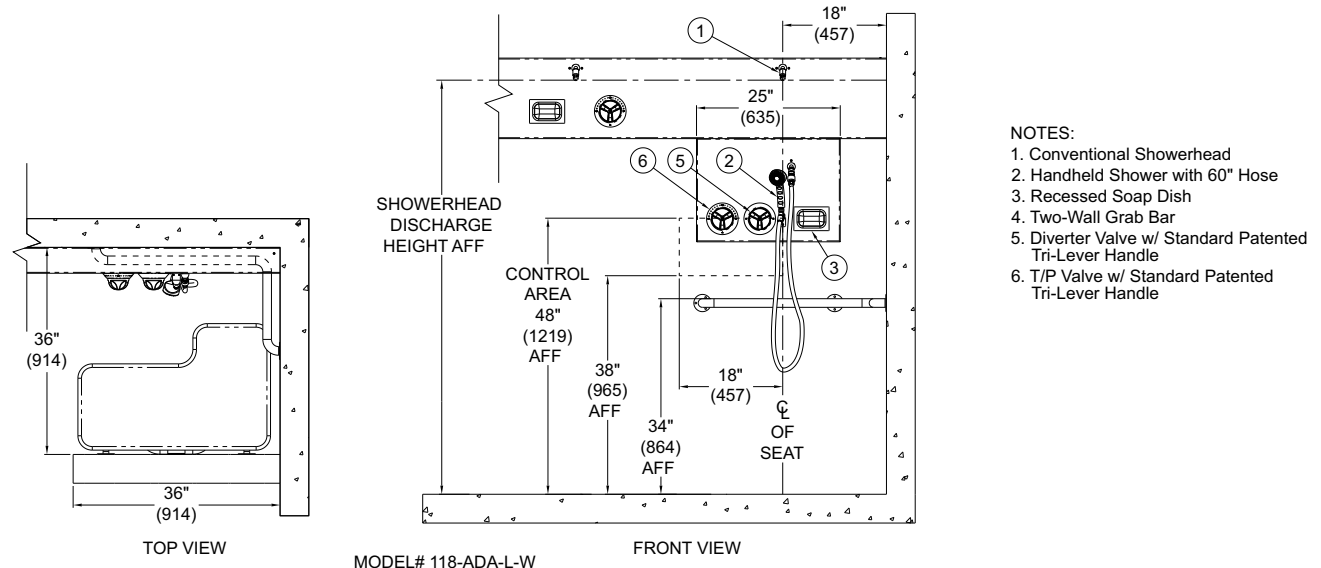
### SHOWERHEAD OPTIONS

- CSH Conical Showerhead (Ligature Resistant) Flow Control
- 2.0 GPM (Not Available For Use in California)
- FH Fixed Head at 48" in Lieu of Handheld Shower
- MSH Multi-Stream Showerhead
- P Penal Showerhead
- QD Quick-Disconnect for Handheld Shower
- PSO Positive Shut-Off
- Y Universal Ball Joint
- YY Lockable Universal Ball Joint

### PRODUCT OPTIONS

- BS Built-in Liquid Soap System (Not ADA Compliant)
- EG Enviro-Glaze, Specify Color: \_\_\_\_\_
- FSP Phenolic Folding Seat in Lieu of Padded Seat
- FSS Stainless Steel Folding Seat in Lieu of Padded Seat
- LFS Less Padded Folding Seat
- LGB Less Grab Bar
- LRD Less Recessed Soap Dish
- SLPB 30 degree Sloping Housing Bottom
- SLPT 30 degree Sloping Housing Top

Please visit [www.acorneng.com](http://www.acorneng.com) for most current specifications.



**WARNING:** Cancer and Reproductive Harm - [www.P65Warnings.ca.gov](http://www.P65Warnings.ca.gov)

<p><b>Important:</b> Installation instructions and current rough-in are furnished with each fixture. Do not rough in without certified dimensions. Dimensions are subject to manufacturer's tolerance of plus or minus 1/4" and change without notice. Acorn assumes no responsibility for use of void or superseded data. © Copyright 2006 Acorn Engineering Company</p>	
<p style="text-align: center;">Selection Summary</p> <p>Model No. &amp; Option _____</p> <p>Quantity _____</p>	<p style="text-align: center;">Approved for Manufacturing</p> <p>Company _____ Title _____</p> <p>Signature _____ Date _____</p>